



M/Y ON TIME



Longueur
34.16m
112.07 ft.



Personnes
10


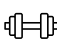















Cabines
5



Equipage
6

M/Y ON TIME

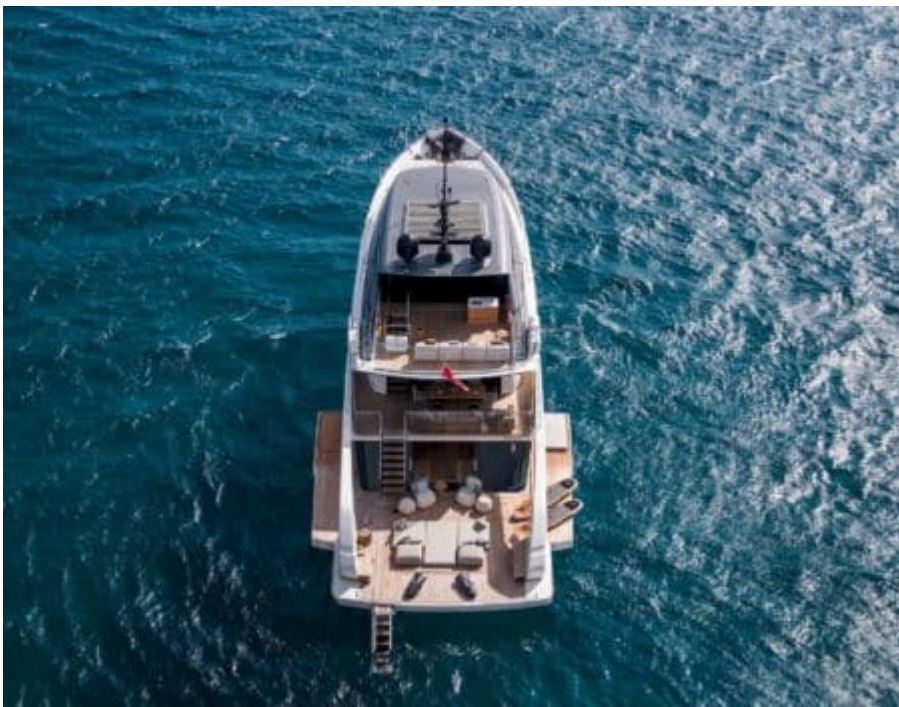
-  Air Conditioning
-  Beach set-up
-  Fishing Gear
-  Gym Equipment
-  Hydraulic platform
-  Jacuzzi
-  Jetski
-  Paddle Boards x 2
-  Snorkeling Gear
-  Sound System
-  Stabilisers at anchor
-  Stabilisers underway
-  Television
-  Tender
-  Towable water toys
-  Wakeboard
-  Waterski
-  Yoga mats



DESIGN D'EXTÉRIEUR





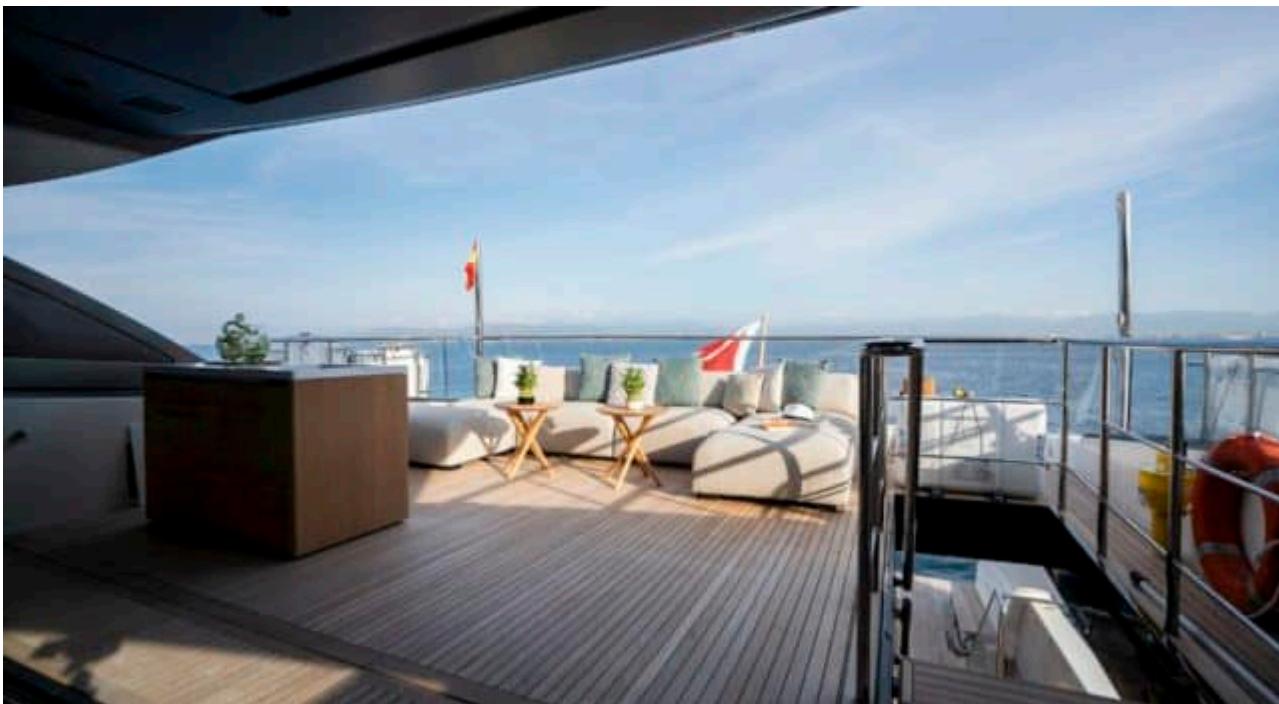










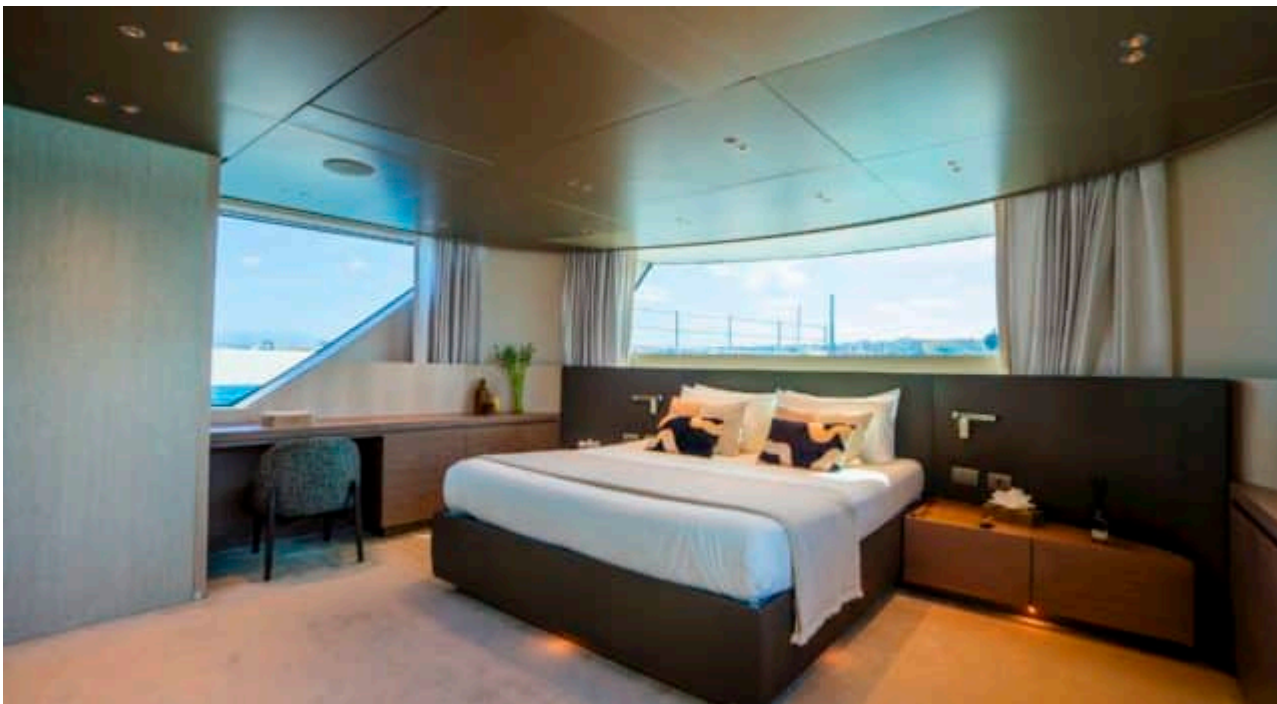
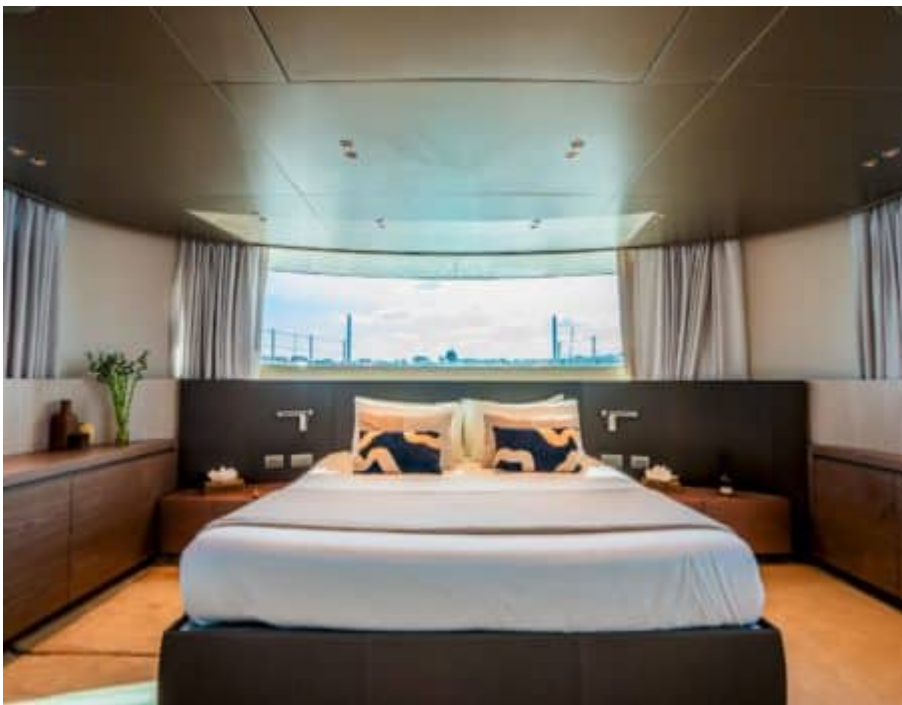


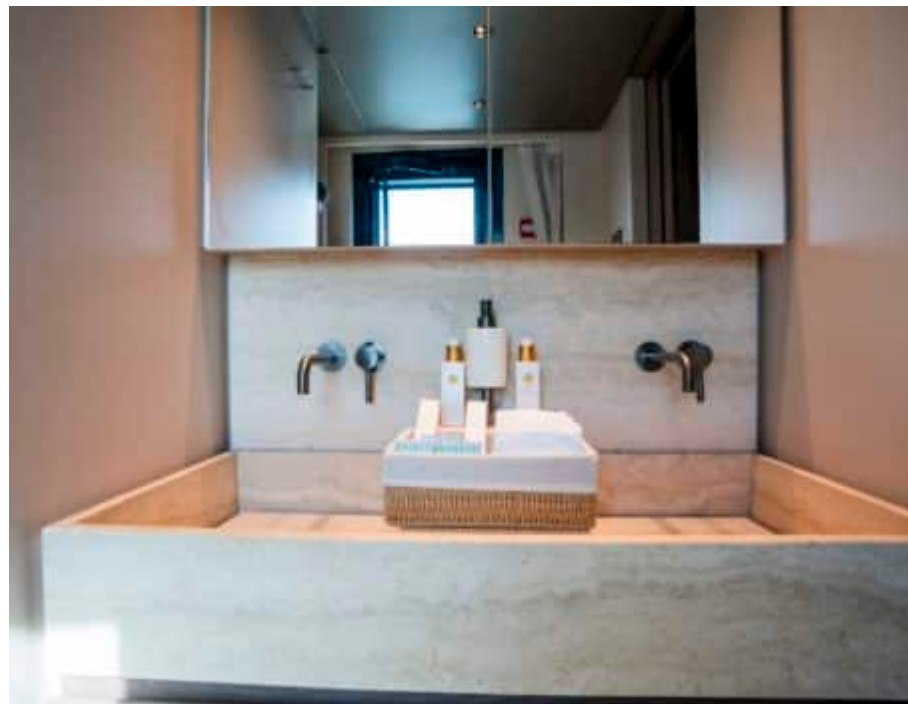
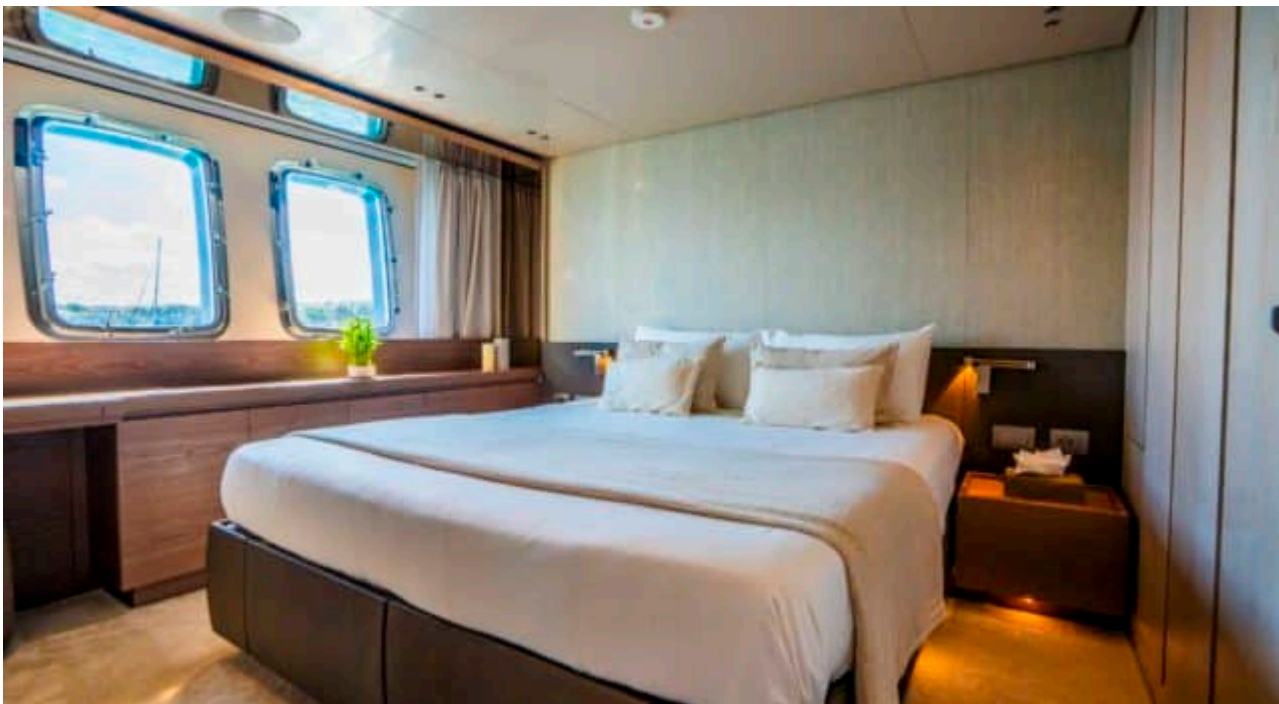
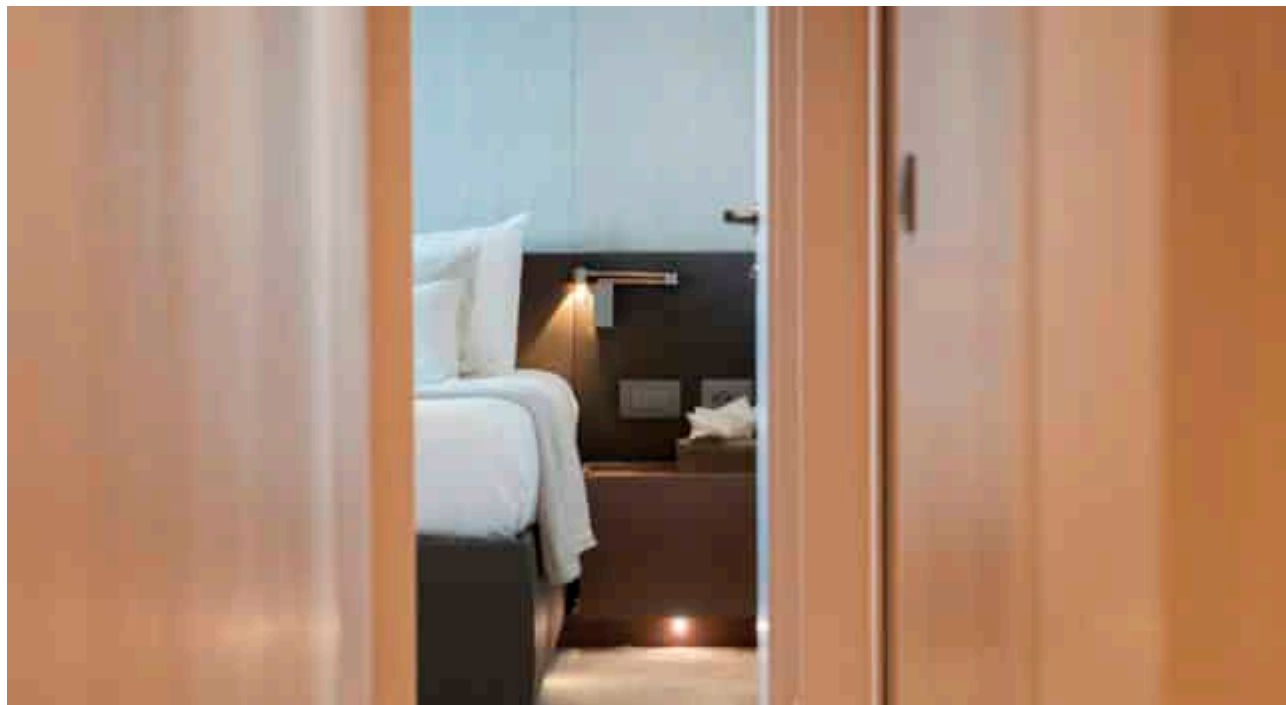


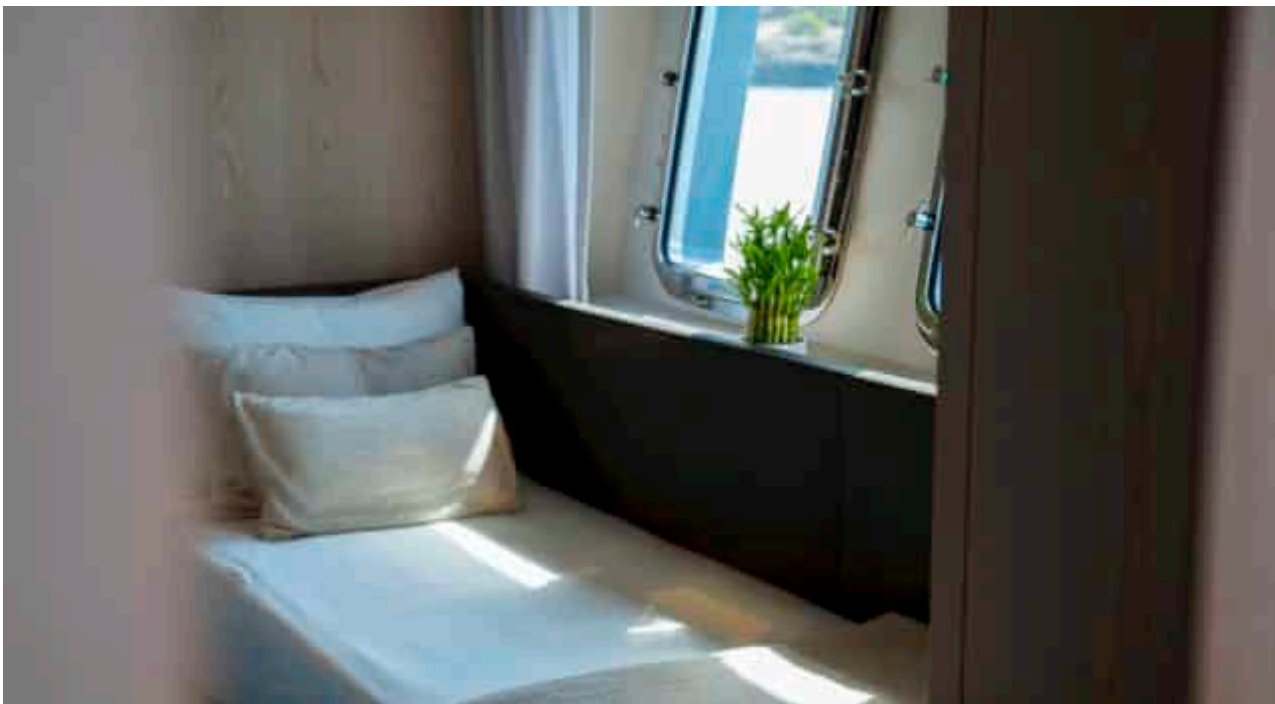
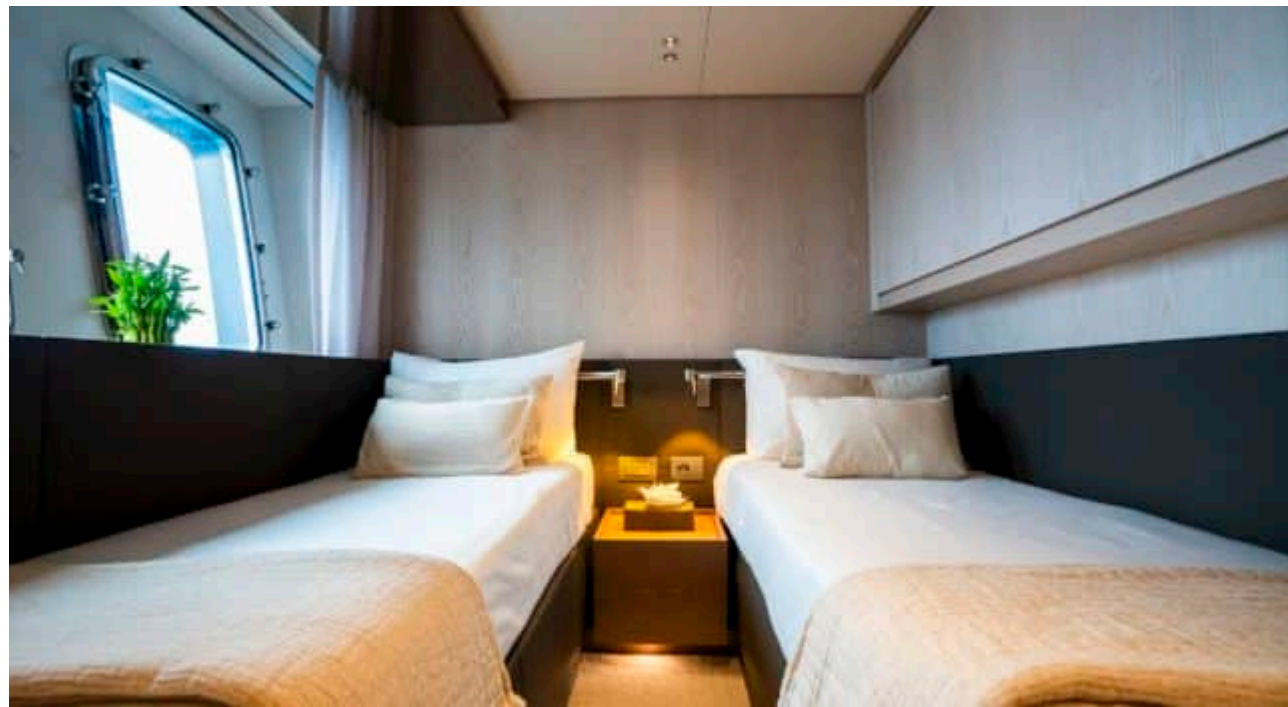
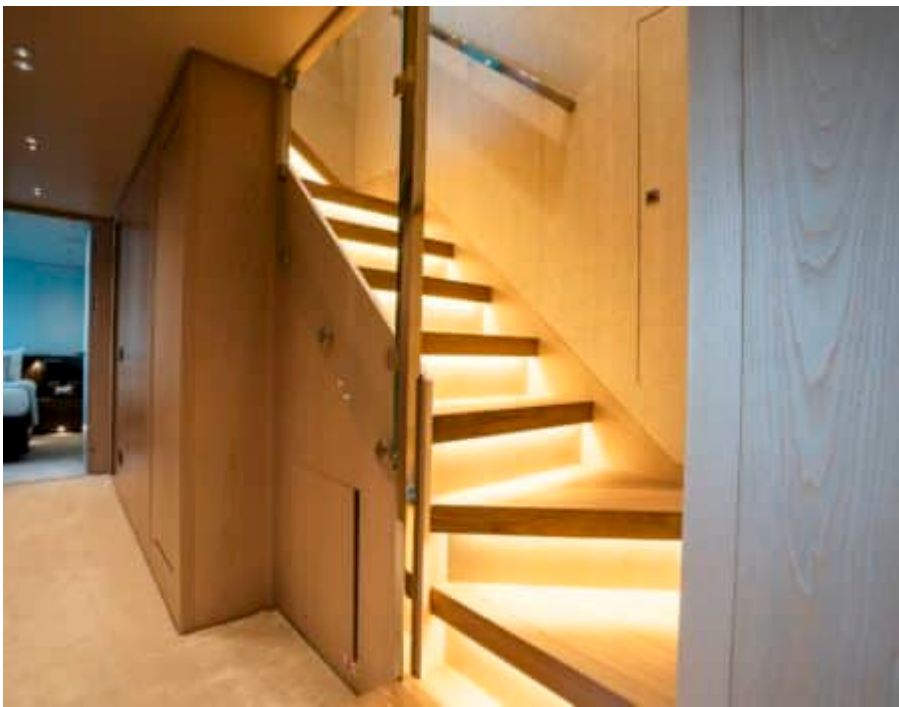
DESIGN D'INTÉRIEUR











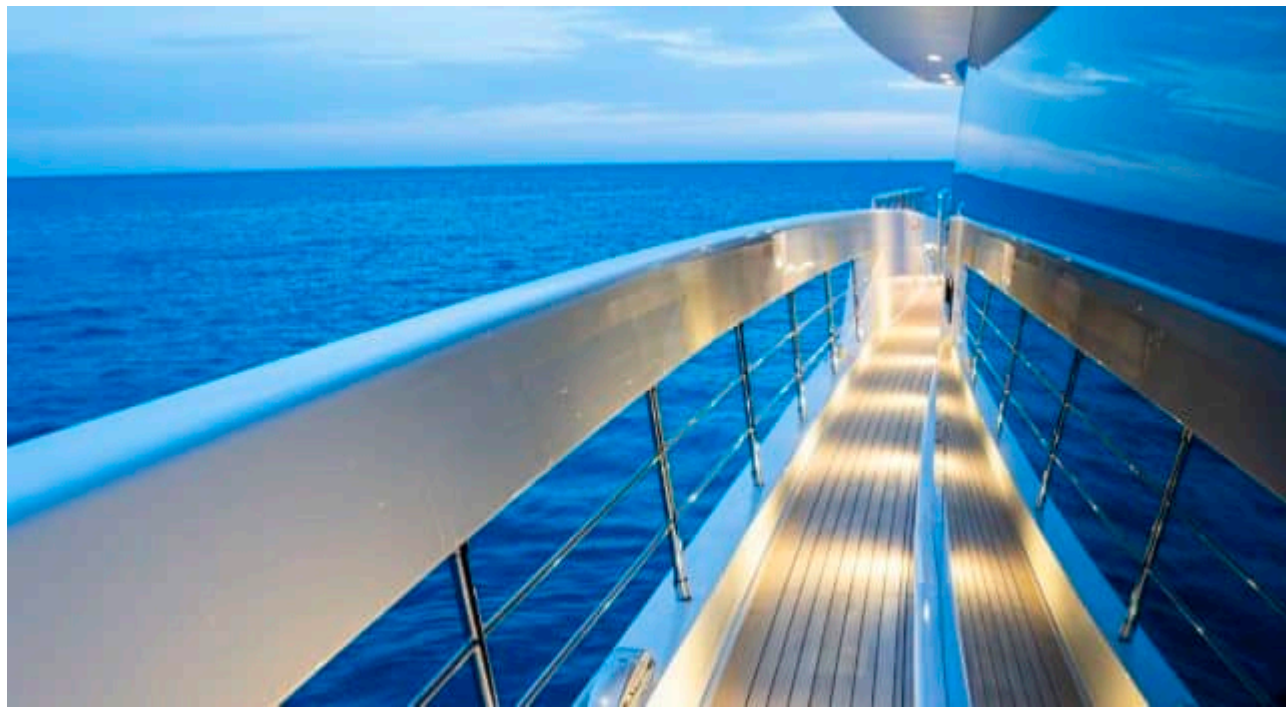


GALERIE MODE DE VIE

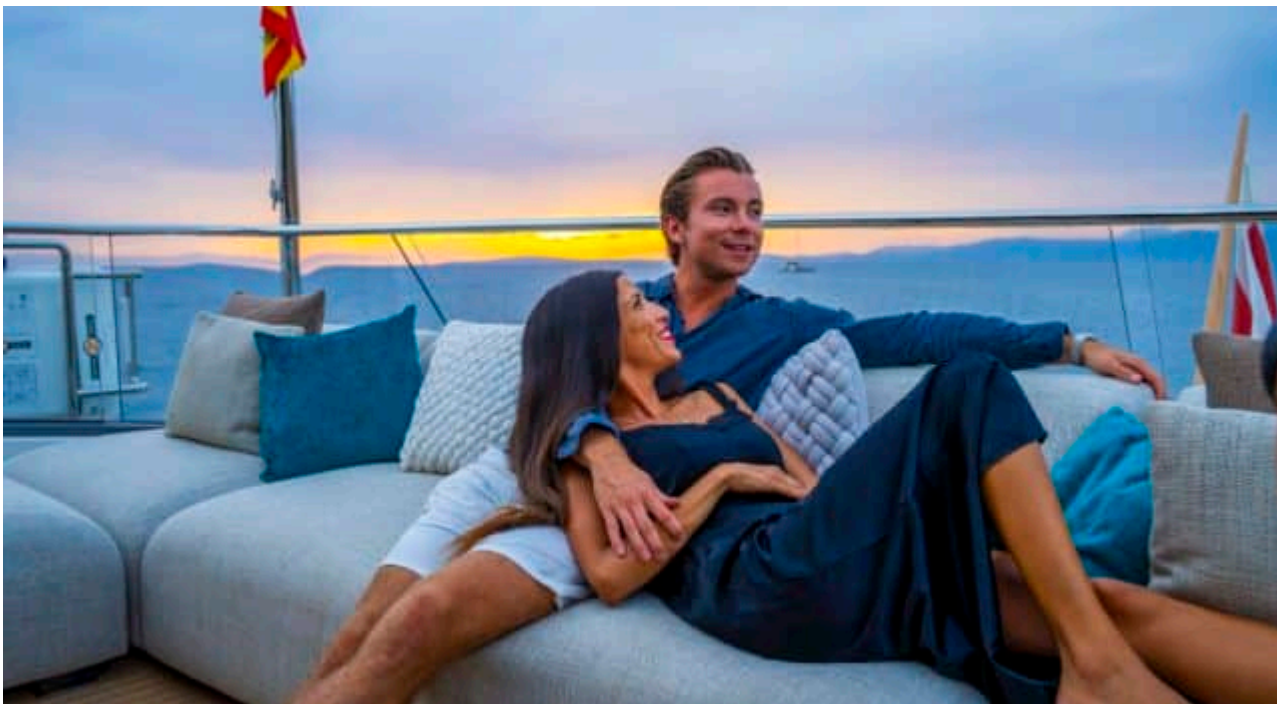


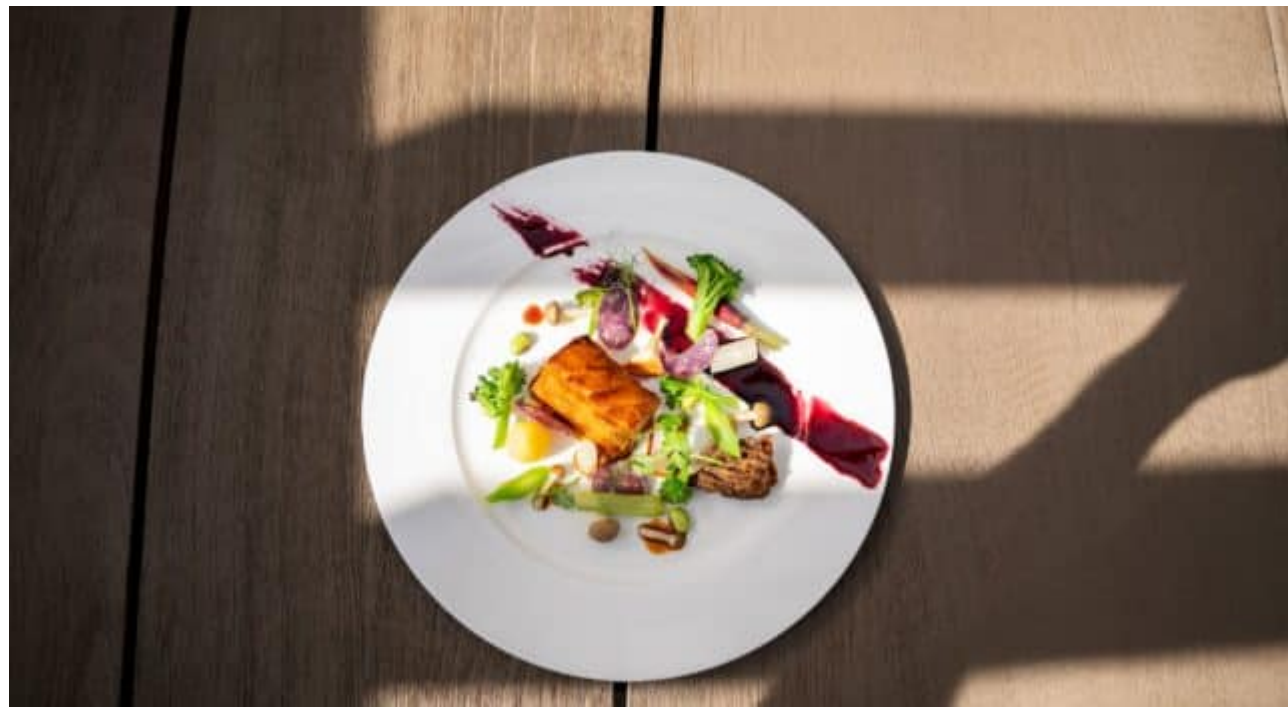




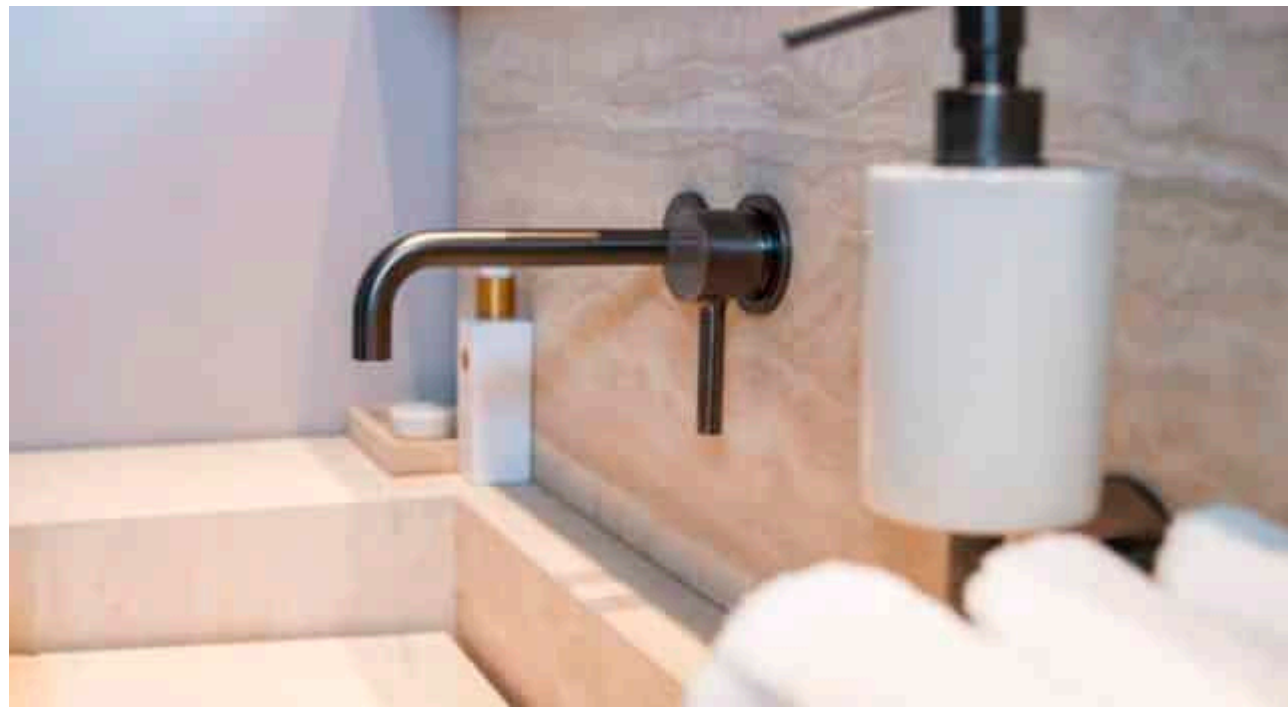
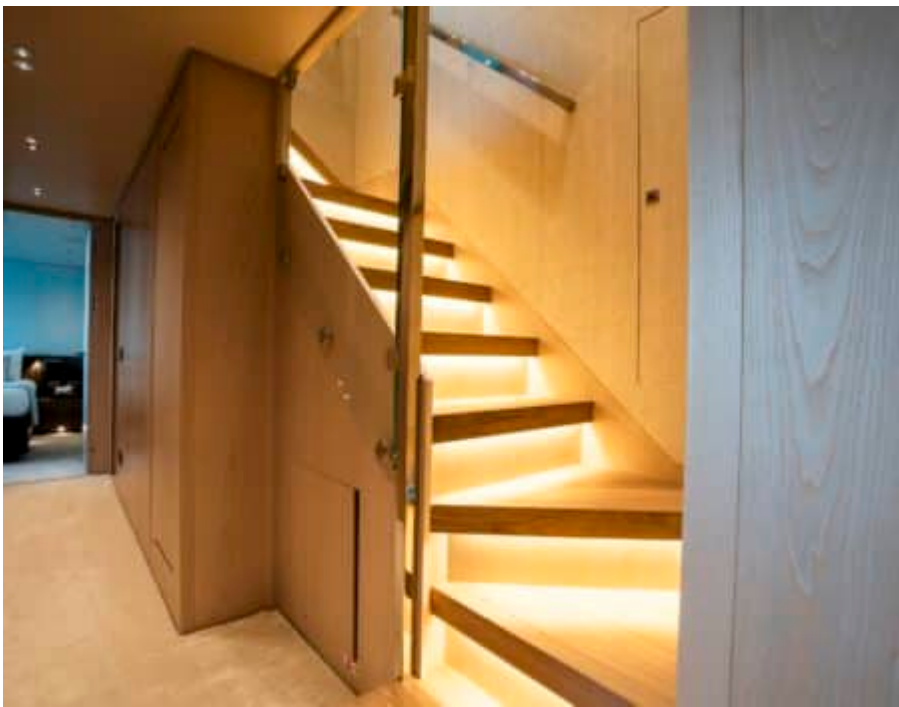














Spécifications



Prix basse saison été / semaine

120 000 €



Prix haute saison été / semaine

135 000 €



Prix basse saison hiver / semaine

120 000 €



Prix haute saison hiver / semaine

135 000 €



Constructeur

Sanlorenzo



Année de construction

2024



Longueur

34.16 m



Navigation

10



Cabines

5

Zone(s) de Navigation hiver

Corsica - Sardinia, French Riviera, Italy & Sicily, Spain & Balearics, West Mediterranean

Zone(s) de Navigation été

Corsica - Sardinia, French Riviera, Italy & Sicily, Spain & Balearics, West Mediterranean

Equipage

6

Vitesse max

23 knots

Vitesse de croisière

12 knots

Consommation

167 L/H

Configuration cabines

5 (3 x Double, 2 x Twin)