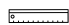







M/Y MY LITTLE VIOLET













 Longueur
46m 150.92 ft.

 Personnes
12

 Cabines
5

 Equipage
10

M/Y MY LITTLE VIOLET

- 
8m+ tender boat / day boat
- 
Air Conditioning
- 
Jetski x 2
- 
Seadoo Seascooter (for diving)
- 
Snorkeling Gear
- 
Stabilisers at anchor
- 
Stabilisers underway
- 
Tender
- 
Towable water toys
- 
Waterskis
- 
Wifi
- 
Scuba diving



DESIGN D'EXTÉRIEUR

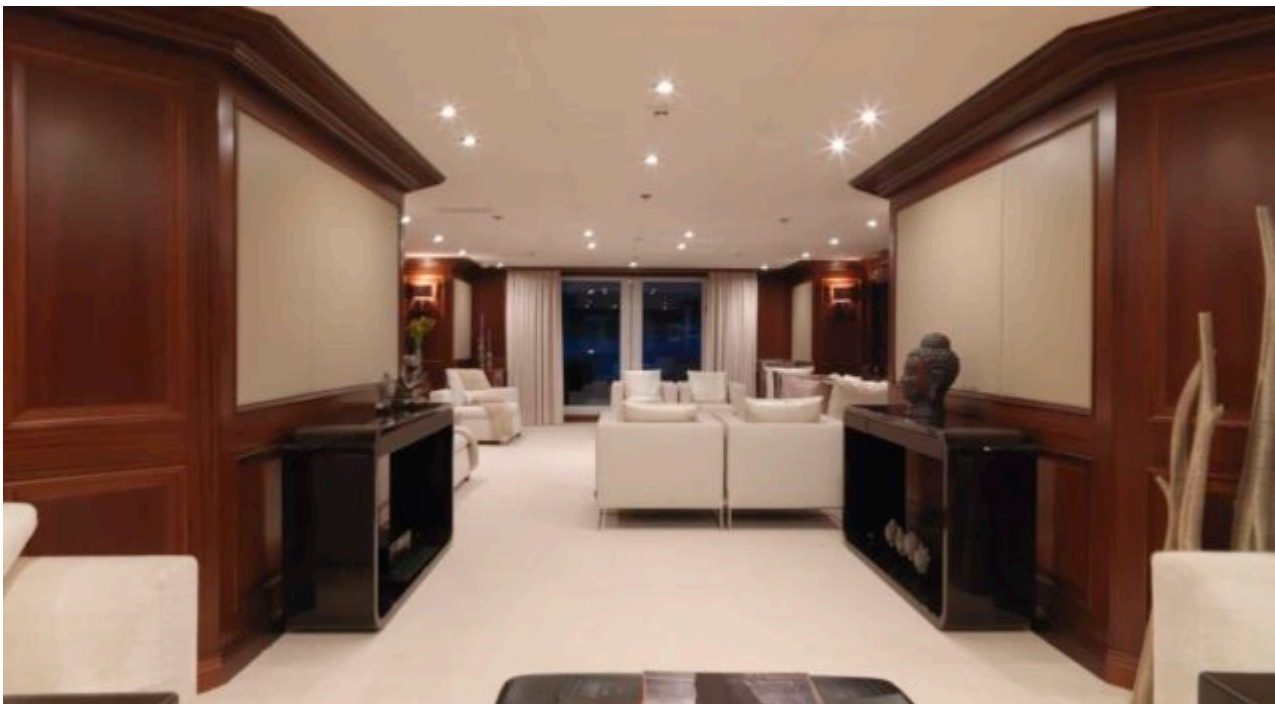


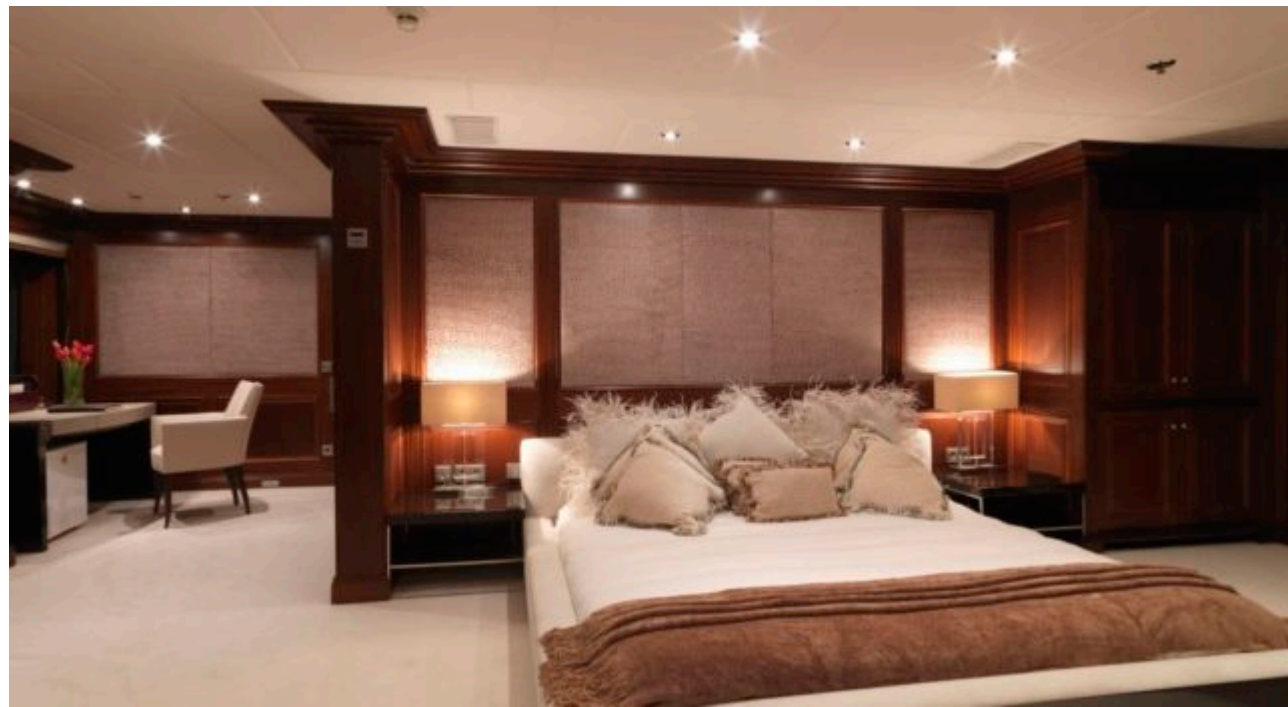


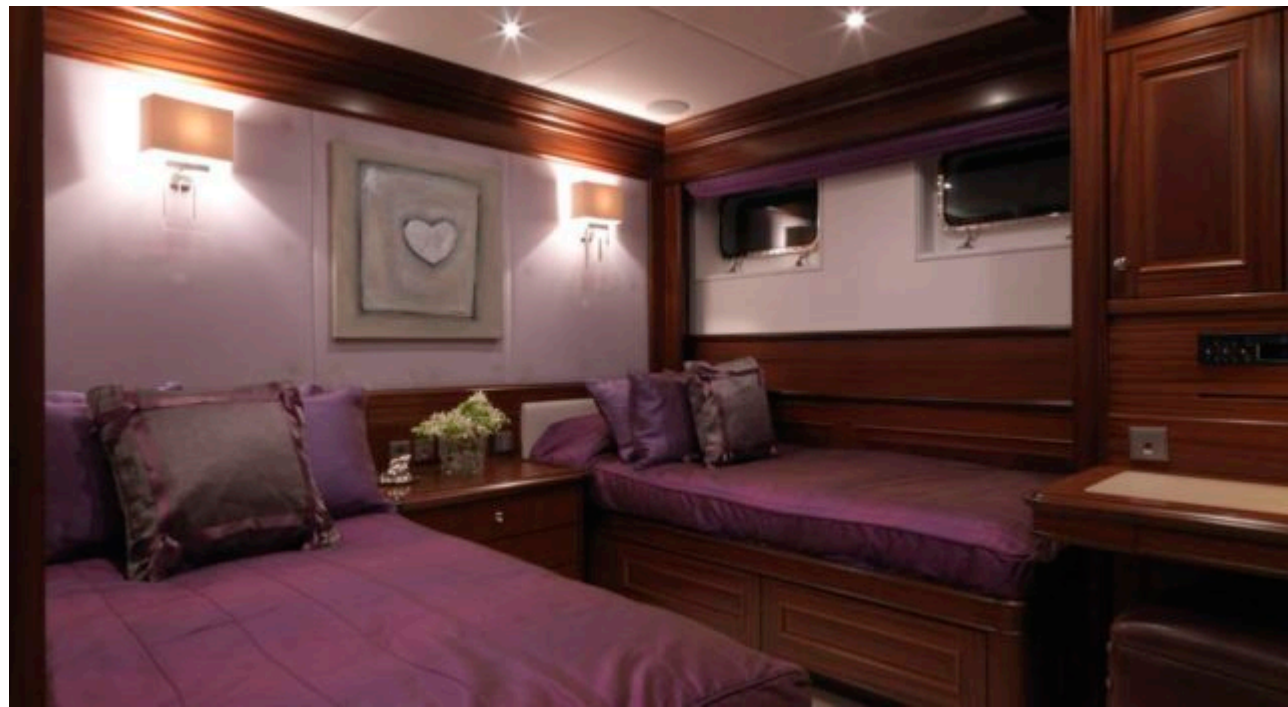


DESIGN D'INTÉRIEUR









GALERIE MODE DE VIE



Spécifications



Prix basse saison / jour

30 000 €



Prix haute saison / jour

33 335 €



Prix basse saison été / semaine

180 000 €



Prix haute saison été / semaine

200 000 €



Prix basse saison hiver / semaine

180 000 €



Prix haute saison hiver / semaine

200 000 €



Constructeur

Abeking & Rasmussen



Année de construction

2006



Longueur

46 m



Navigation

12



Cabines

5

Zone(s) de Navigation hiver

West Mediterranean

Zone(s) de Navigation été

Corsica - Sardinia, Croatia, East Mediterranean, French Riviera, Italy & Sicily, West Mediterranean

Equipage

10

Vitesse max

15 knots

Vitesse de croisière

12 knots

Consommation

220 Litres/Hr

Configuration cabines

5 (4 x Double, 1 x Twin)