



## M/Y EXTRA TIME



Longueur  
**44.27m** 145.24  
ft.



Personnes  
**10**




















Cabines  
**5**



Equipage  
**9**



# M/Y EXTRA TIME

-  Air Conditioning
-  Apple TV
-  E-Foil
-  Electric bicycle
-  Jacuzzi
-  Jetski x 2
-  Jetsurf
-  Seabob x 3
-  Snorkeling Gear
-  Sound System
-  Stabilisers at anchor
-  Stabilisers underway
-  Surf Board
-  Television
-  Tender
-  Wifi
-  Windsurf





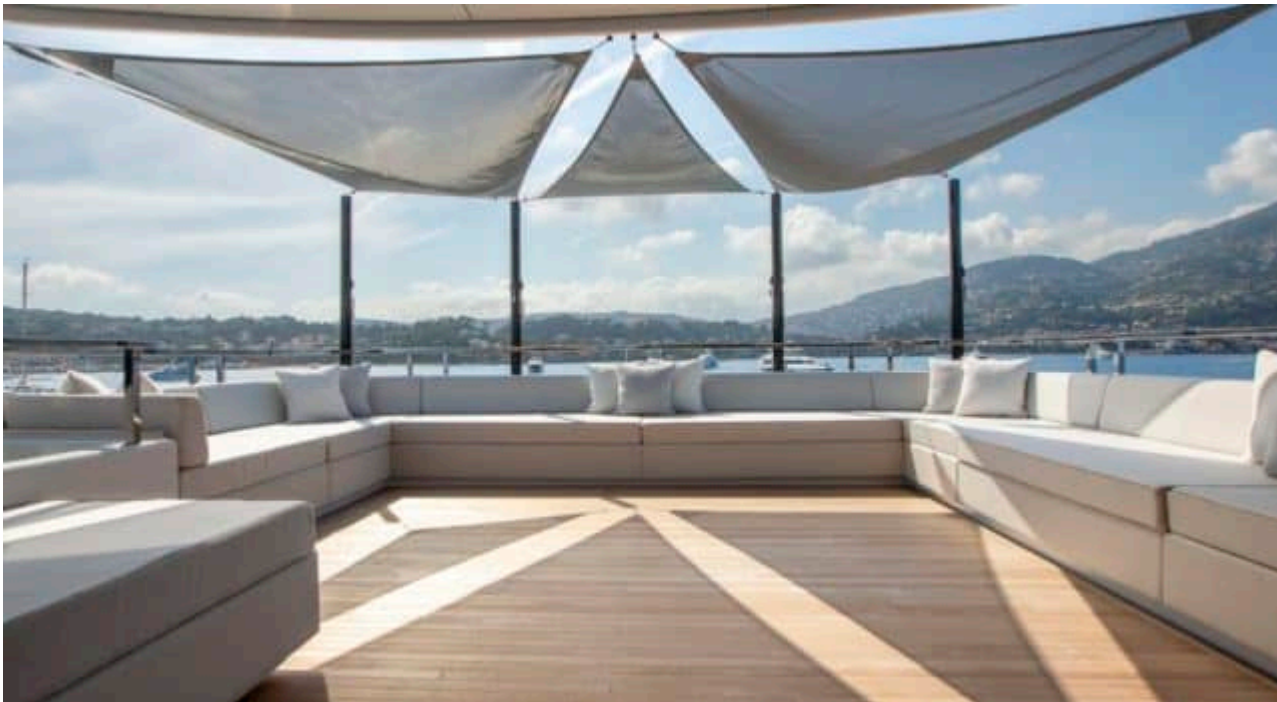
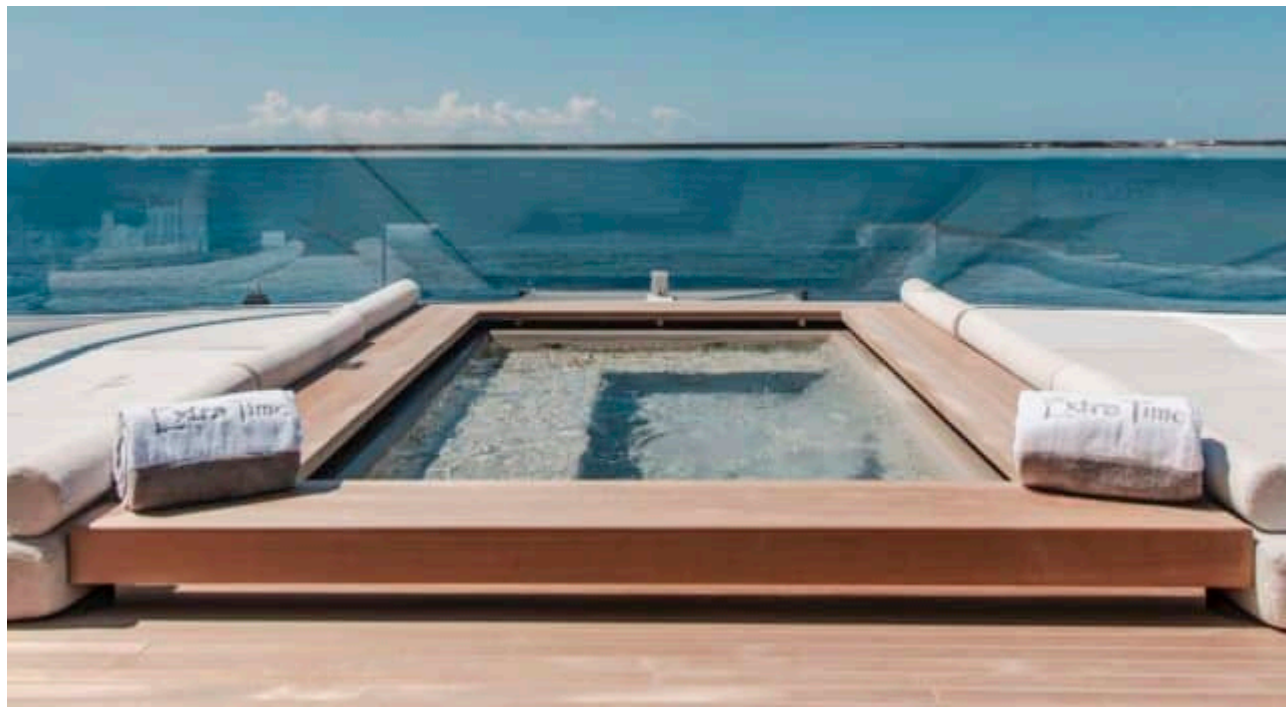
# DESIGN D'EXTÉRIEUR













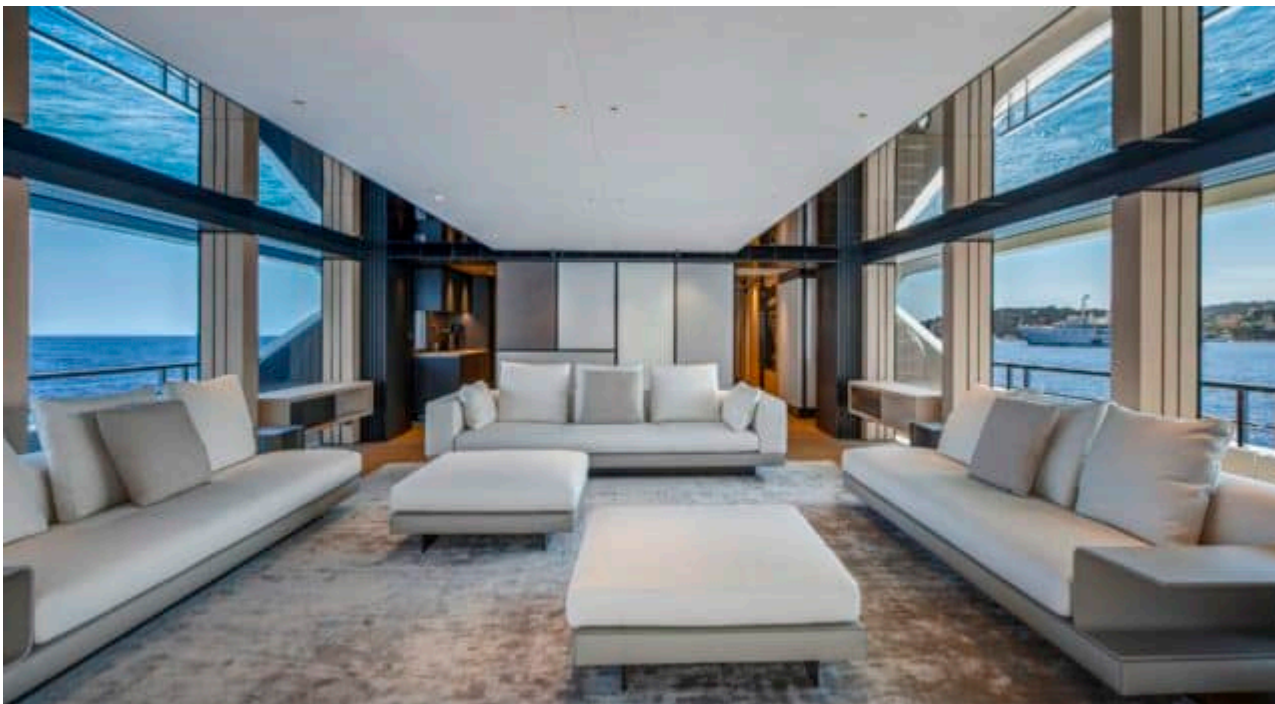
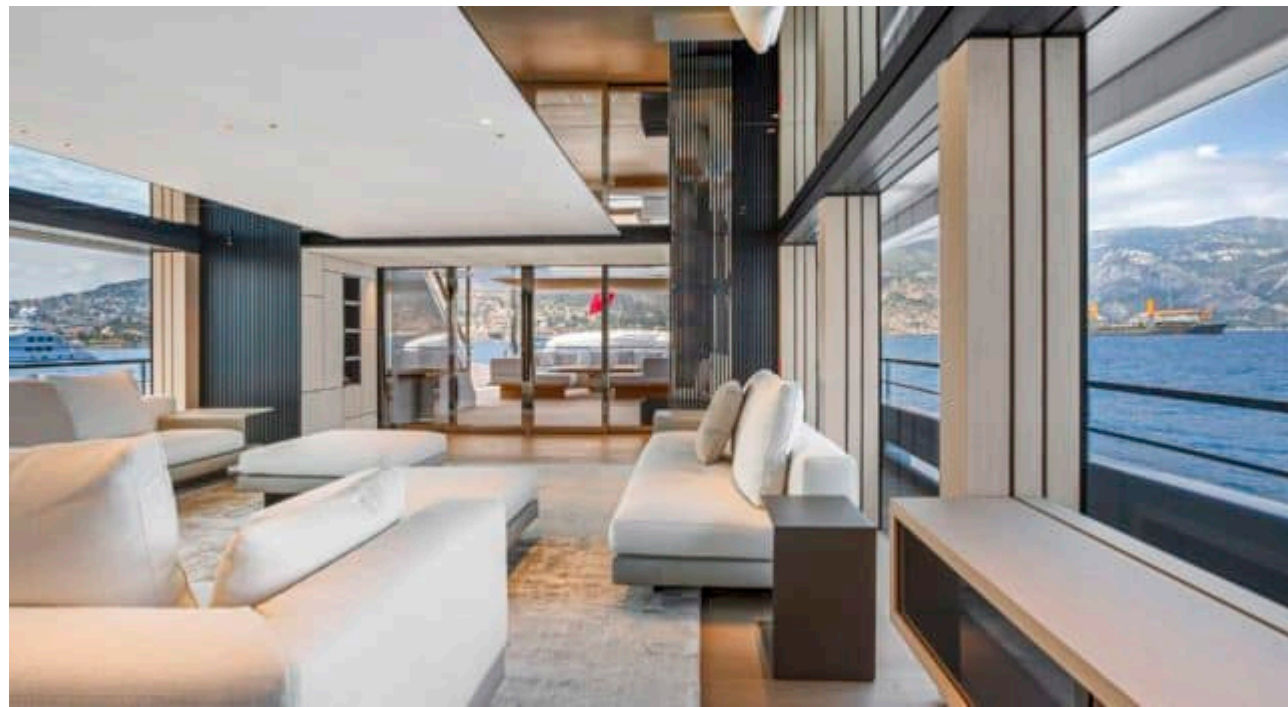




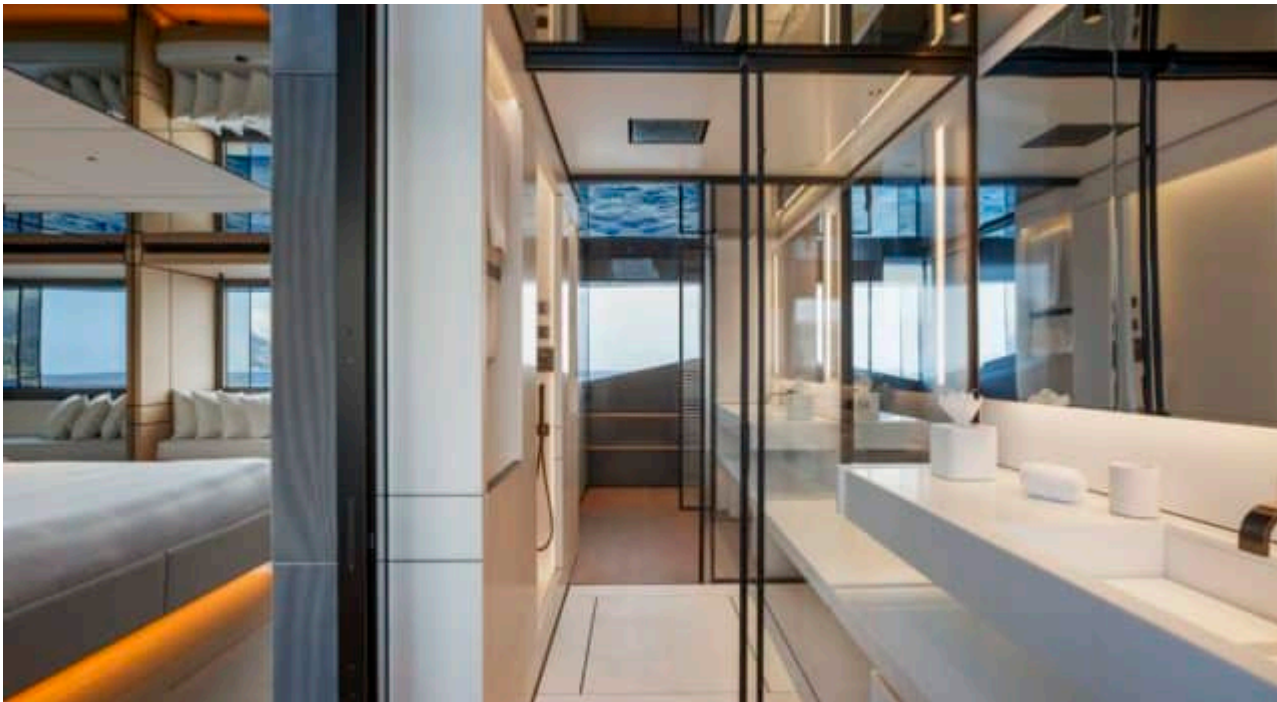
# DESIGN D'INTÉRIEUR



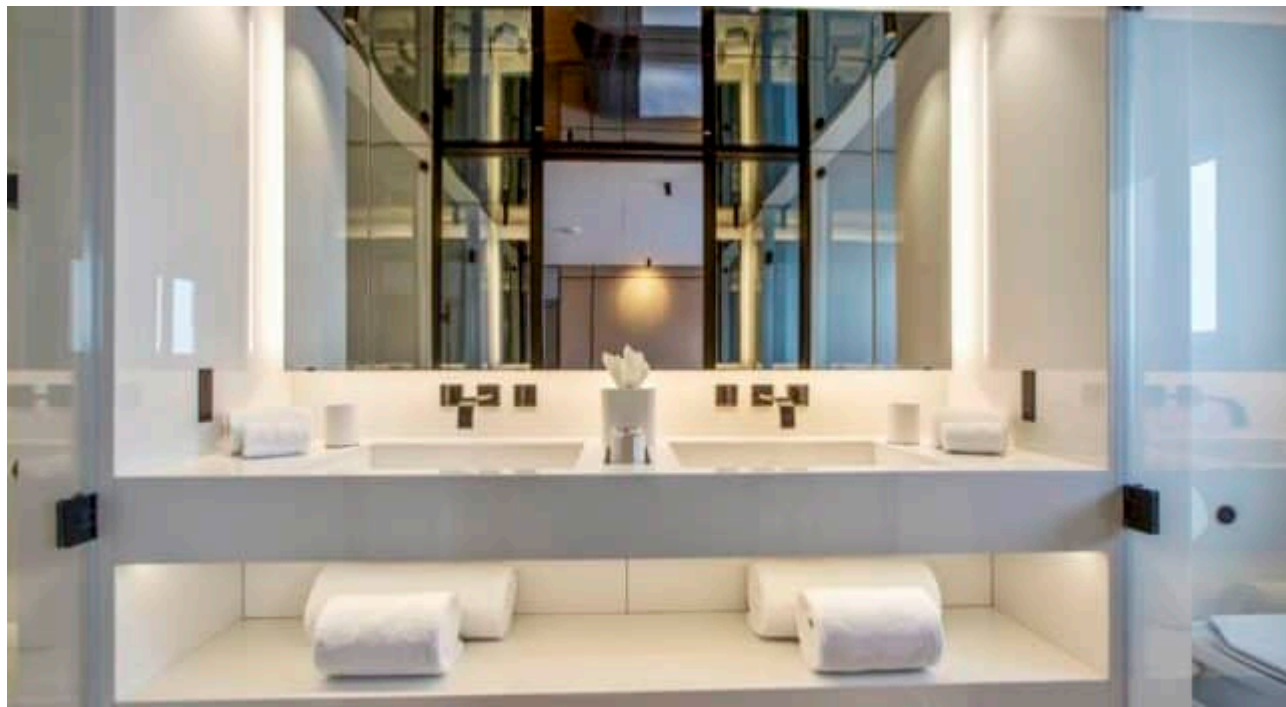
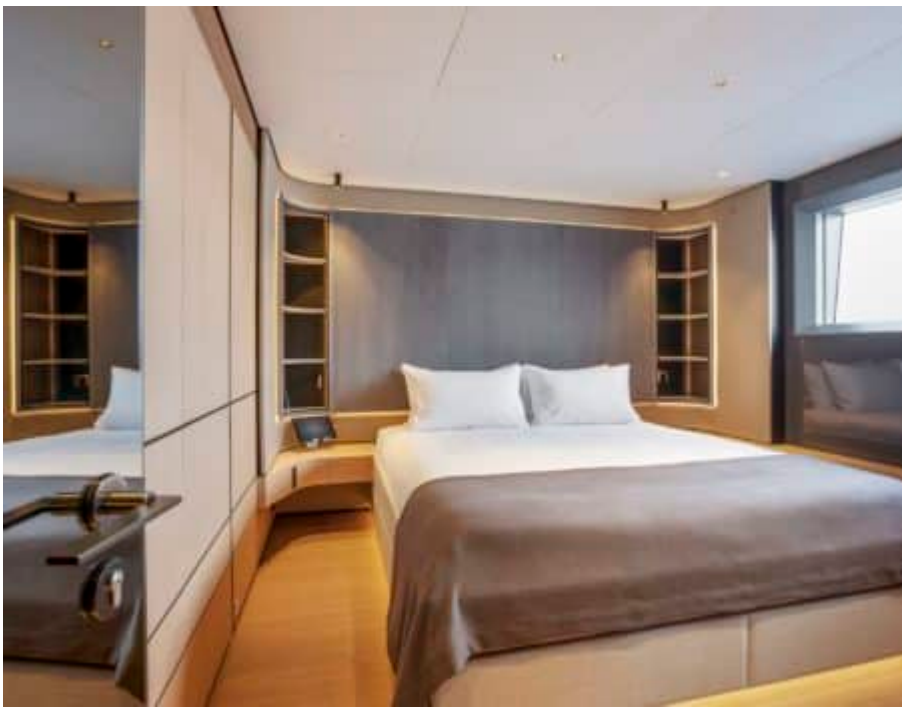




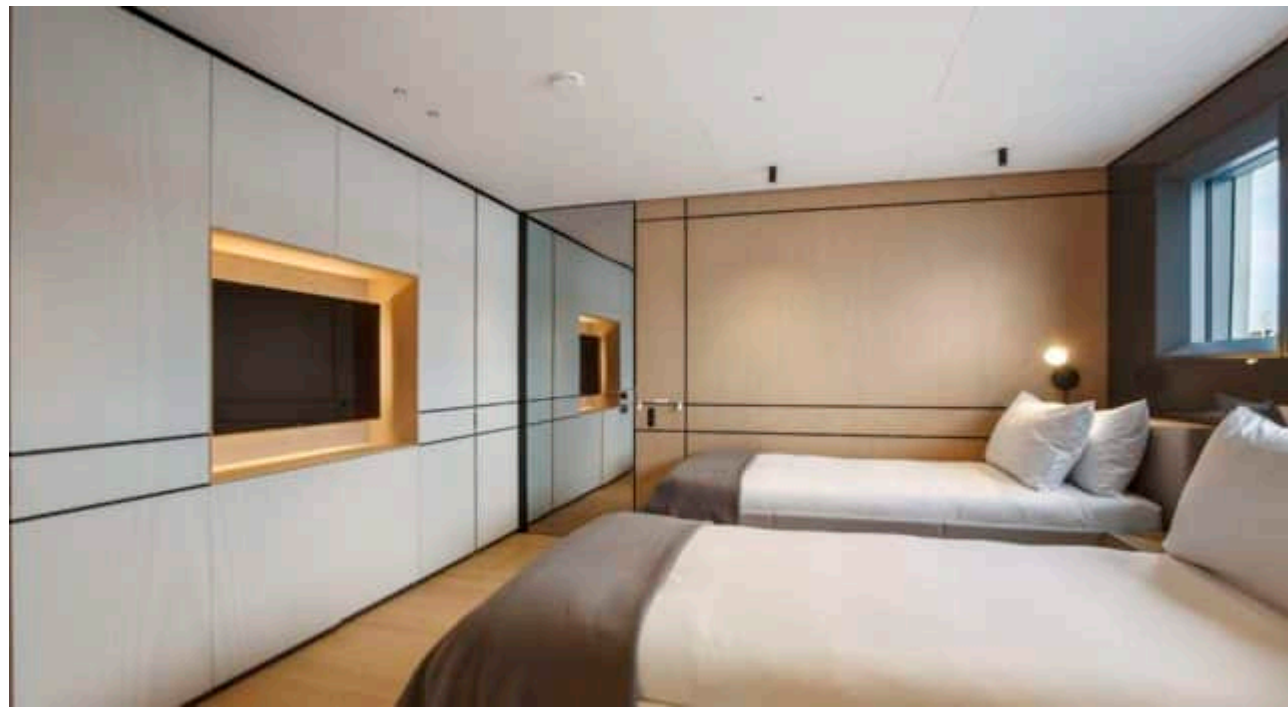










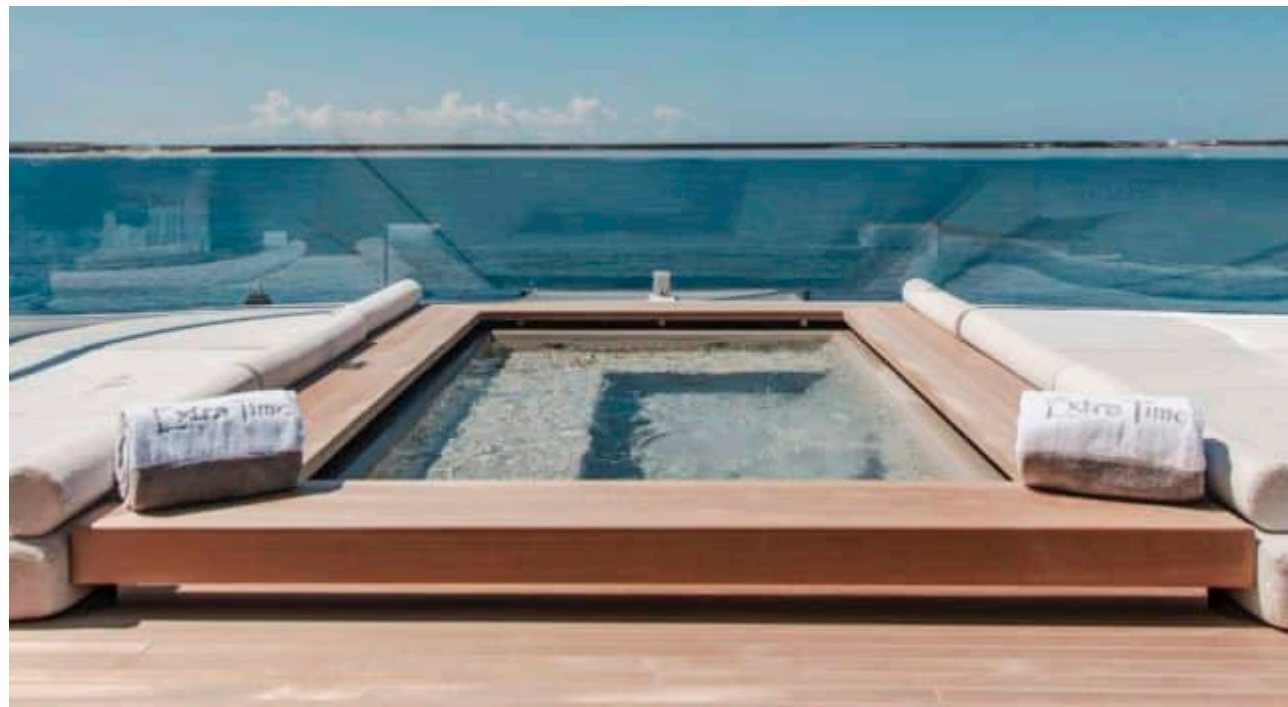




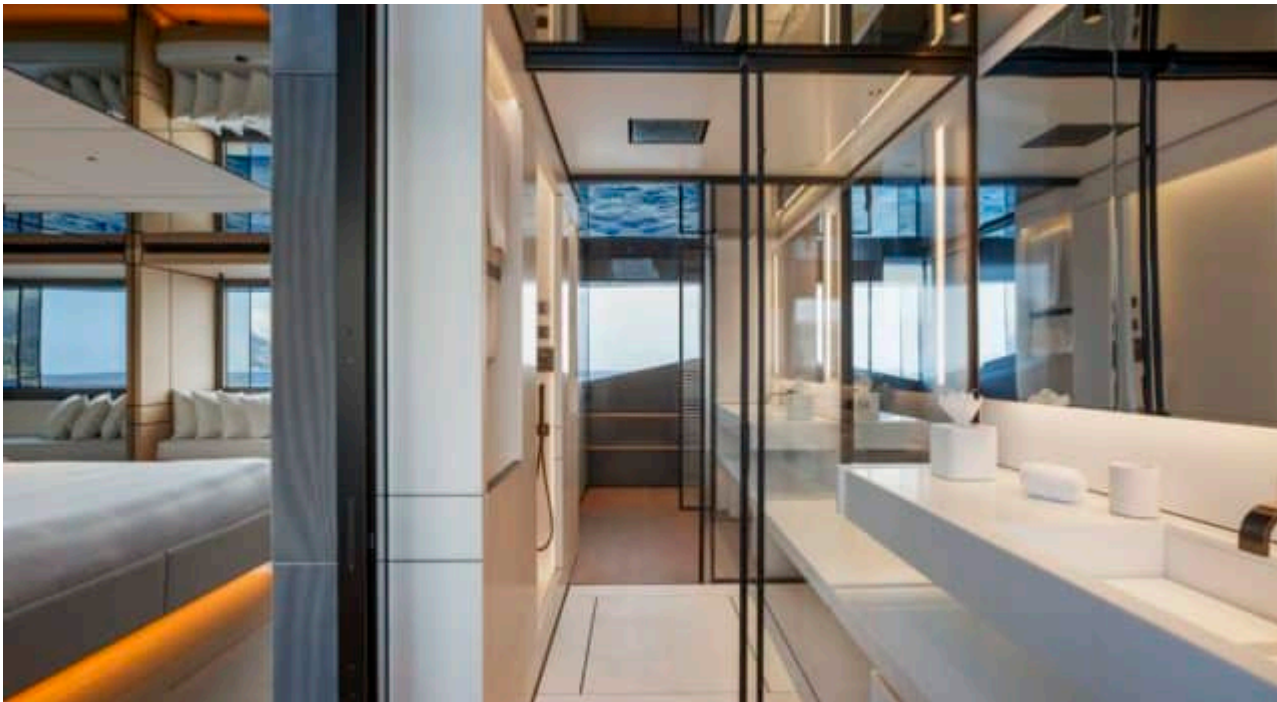
# GALERIE MODE DE VIE

















# Spécifications



Prix basse saison été / semaine

240 000 €



Prix haute saison été / semaine

285 000 €



Prix basse saison hiver / semaine

0 €



Prix haute saison hiver / semaine

0 €



Constructeur

Conrad



Année de construction

2024



Longueur

44.27 m



Navigation

10



Cabines

5

Zone(s) de Navigation hiver

Zone(s) de Navigation été

Corsica - Sardinia, French Riviera, Italy & Sicily, Spain & Balearics, West Mediterranean

Equipage

9

Vitesse max

12 knots

Vitesse de croisière

11 knots

Consommation

120 L/H

Configuration cabines

5 (3 x Double, 2 x Convertible)