



S/Y LEVANTE



Longueur
24m
78.74 ft.



Personnes
10










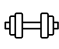













Cabines
4



Equipage
4

S/Y LEVANTE

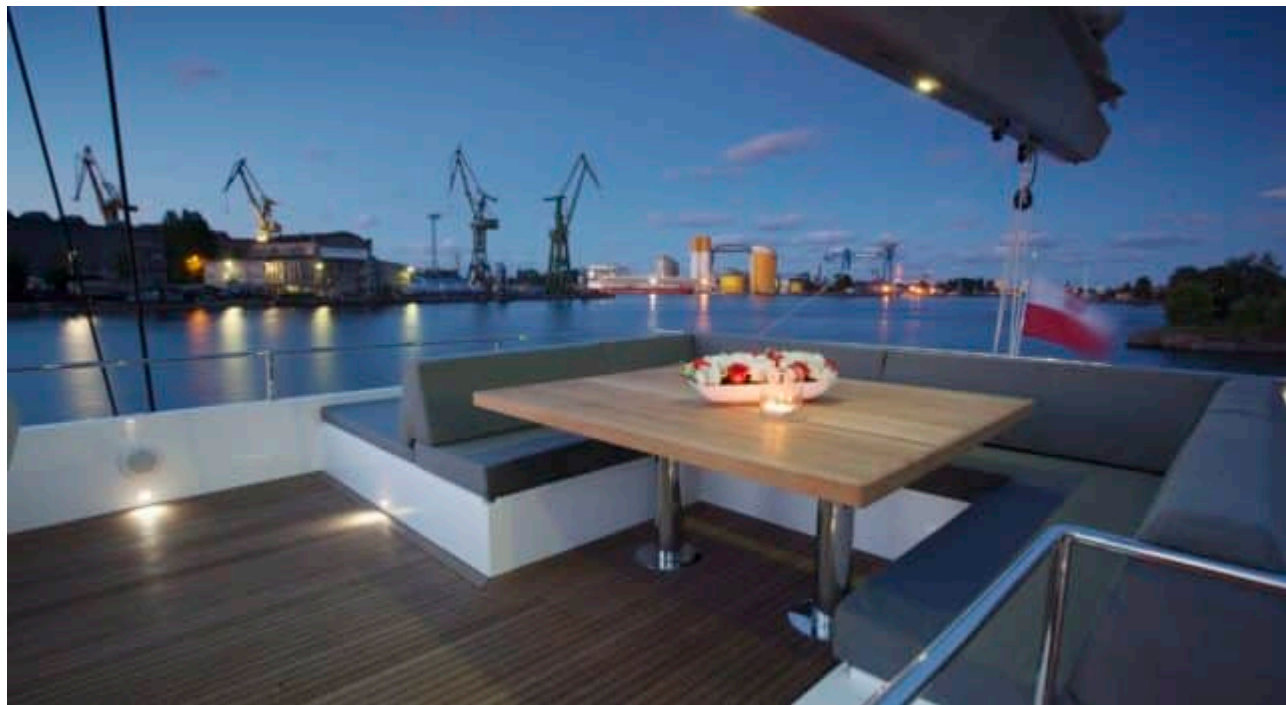
-  Air Conditioning
-  Fridge
-  Kitchen
-  Shower
-  Sound System
-  Sunbeds
-  TV
-  Donuts
-  Fishing Gear
-  Gym Equipment
-  Inflatable kayak x2
-  Inflatable paddle board x2
-  Monoski
-  Snorkeling Gear
-  Tender
-  Wakeboard
-  Waterskis
-  Wifi
-  Windsurf
-  Yoga mats
-  Kite surf



DESIGN D'EXTÉRIEUR



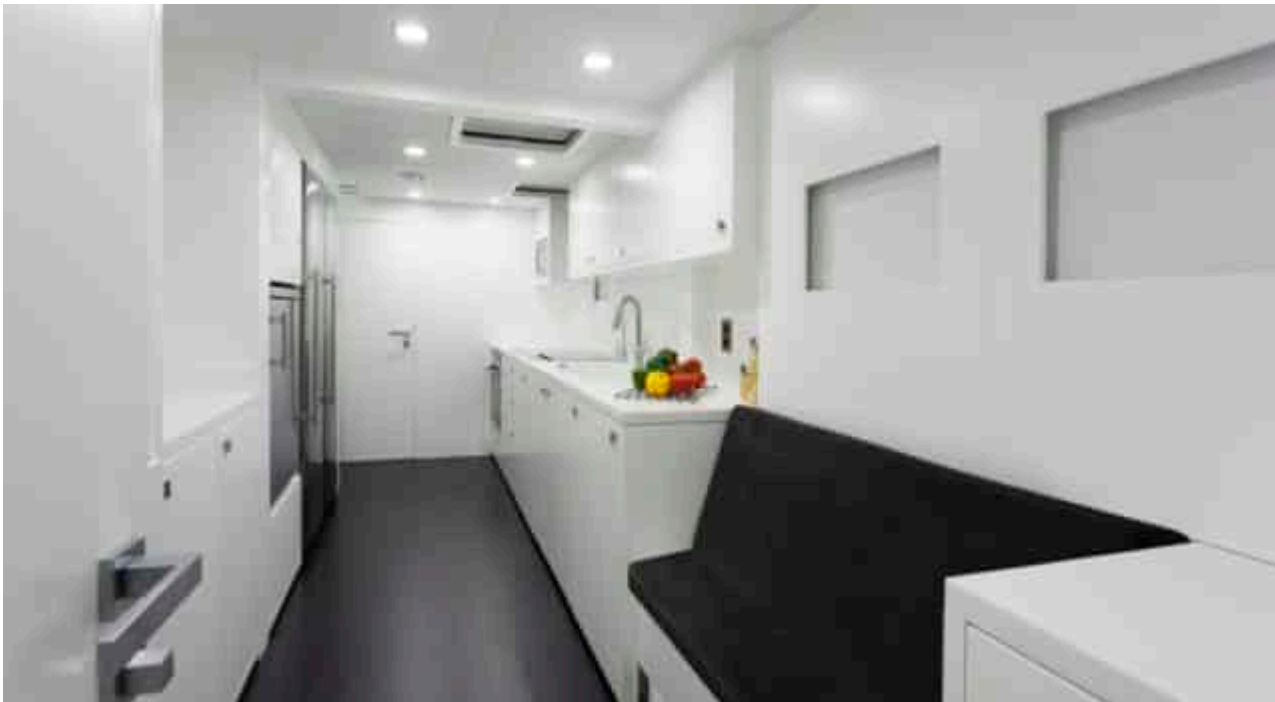


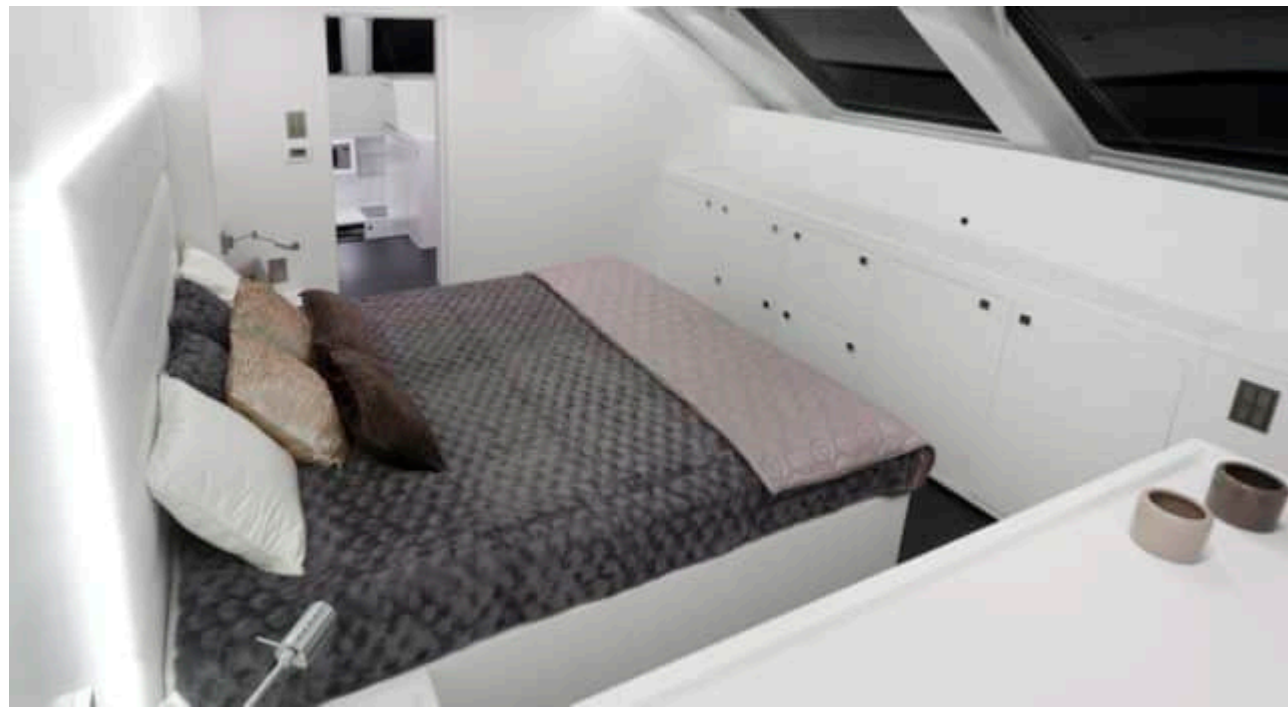


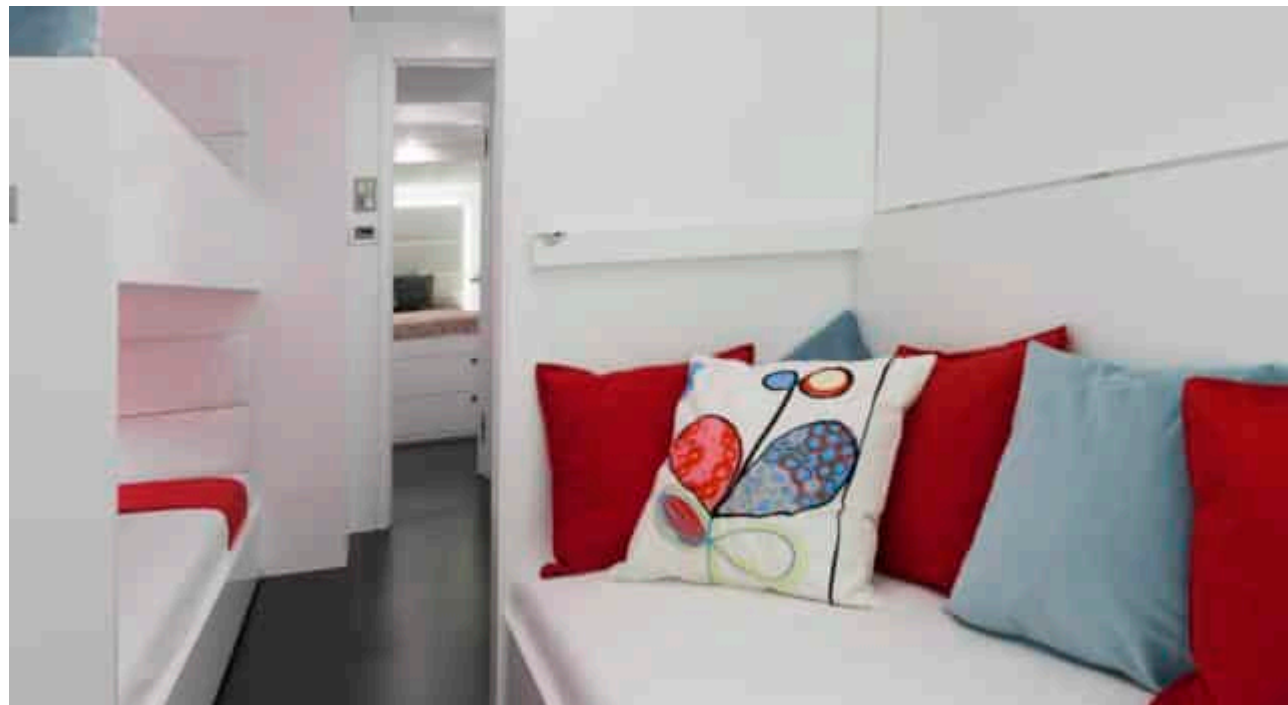


DESIGN D'INTÉRIEUR





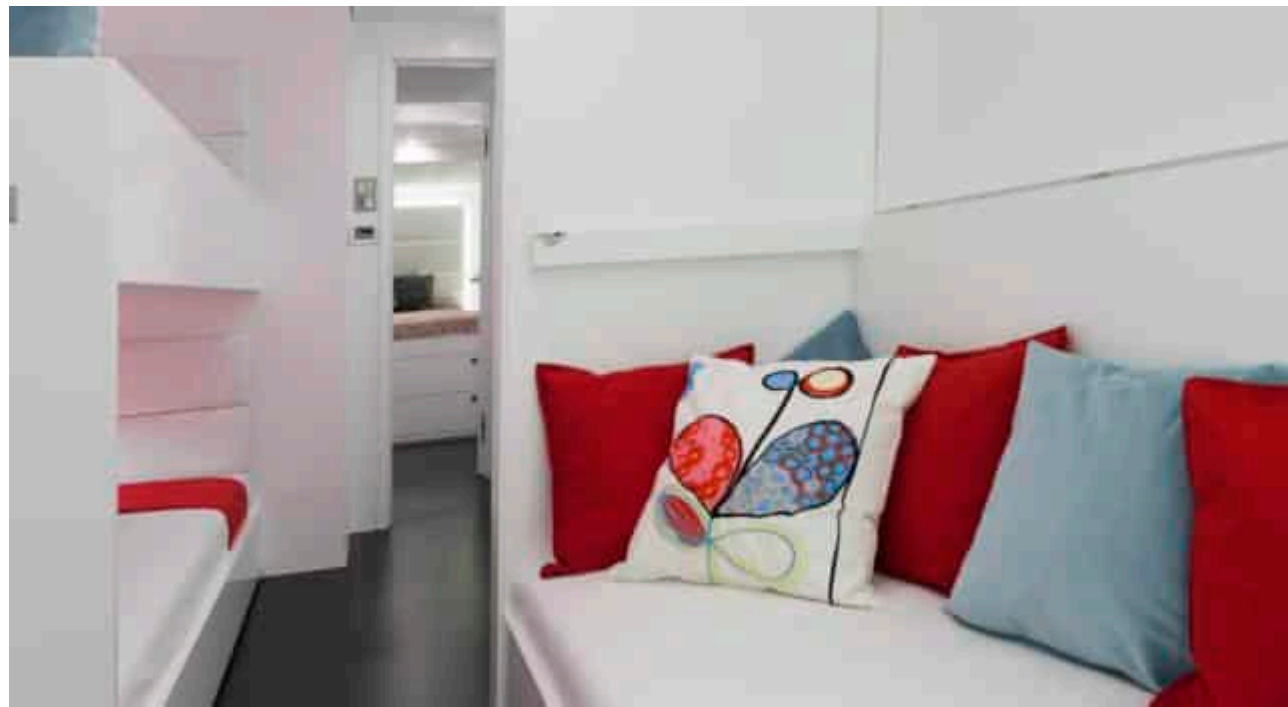






GALERIE MODE DE VIE





Spécifications



Prix basse saison été / semaine

\$ 59 000



Prix haute saison été / semaine

\$ 59 000



Prix basse saison hiver / semaine

\$ 59 000



Prix haute saison hiver / semaine

\$ 59 000



Constructeur

Sunreef Yachts



Année de construction

2013



Année de refit

2020



Longueur

24 m



Navigation

10



Cabines

4

Zone(s) de Navigation hiver

South Pacific & Australasia

Zone(s) de Navigation été

South Pacific & Australasia

Equipage

4

Vitesse max

14 knots

Vitesse de croisière

10 knots

Consommation

40 Litres/Hr

Configuration cabines

4 (3 x Doubles, 1 x Twin)