



M/Y LIQUID SKY



Length
47m 154.2 ft.



Guests
12

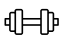







Cabins
5



Crew
9

M/Y LIQUID SKY

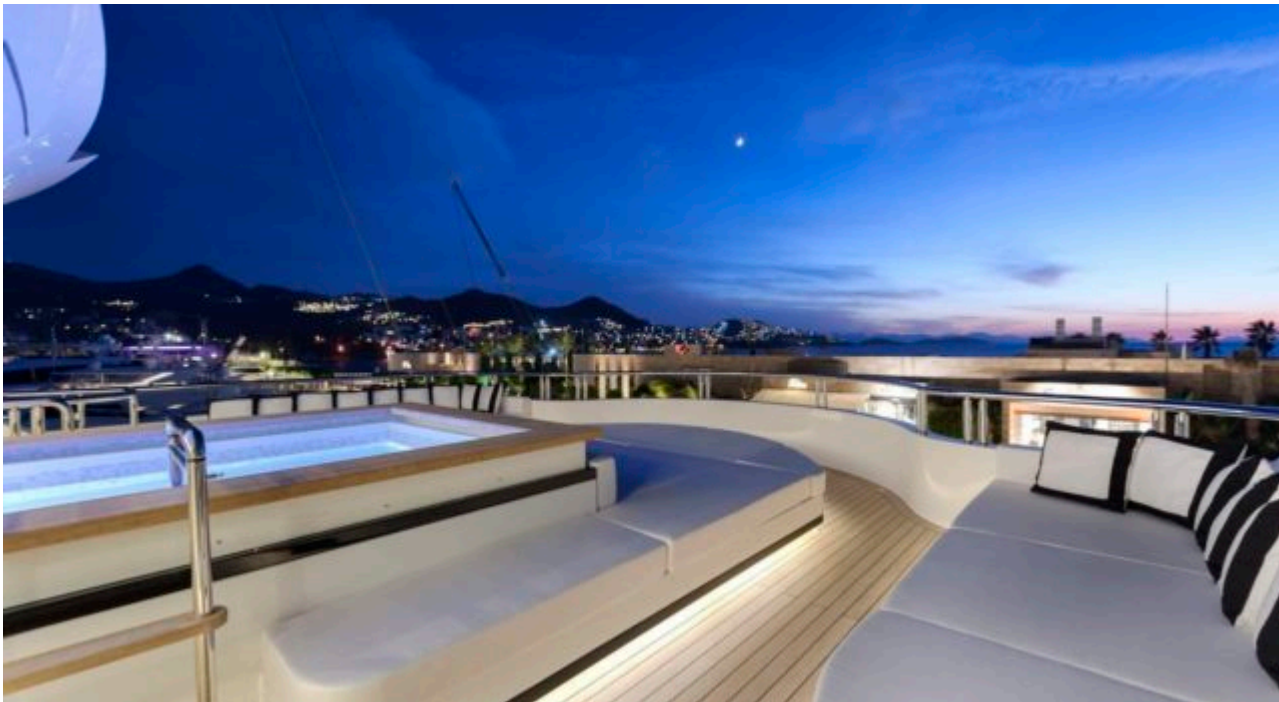
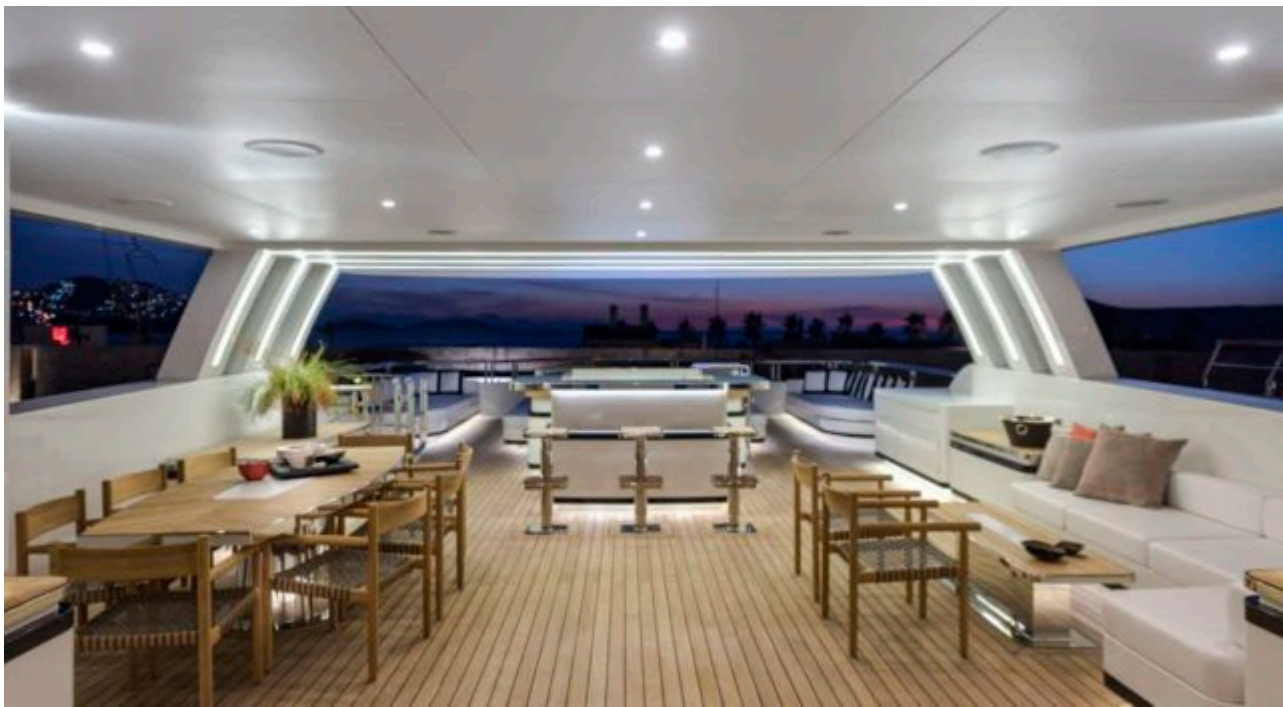
- | | | | | |
|---|--|--|---|--|
| 
Air Conditioning | 
Banana | 
Donuts | 
Fishing Gear | 
Gym Equipment |
| 
Jacuzzi | 
Jetski | 
Jetski stand-up | 
Kayaking | 
Paddle Boards x 2 |
| 
Seabob x 2 | 
Snorkeling Gear | 
Stabilisers at anchor | 
Stabilisers underway | 
Tender |
| 
Wakeboard | 
Waterskis | 
Wifi | 
Scuba diving | |

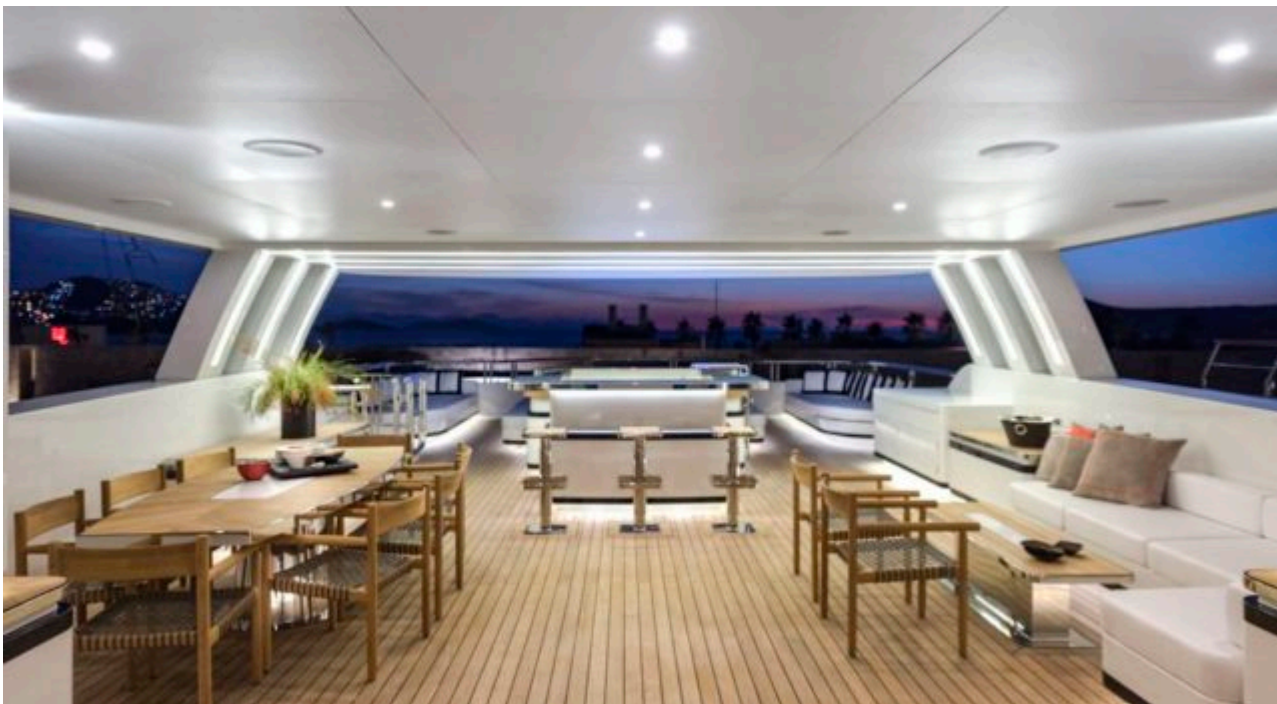


EXTERIOR DESIGN





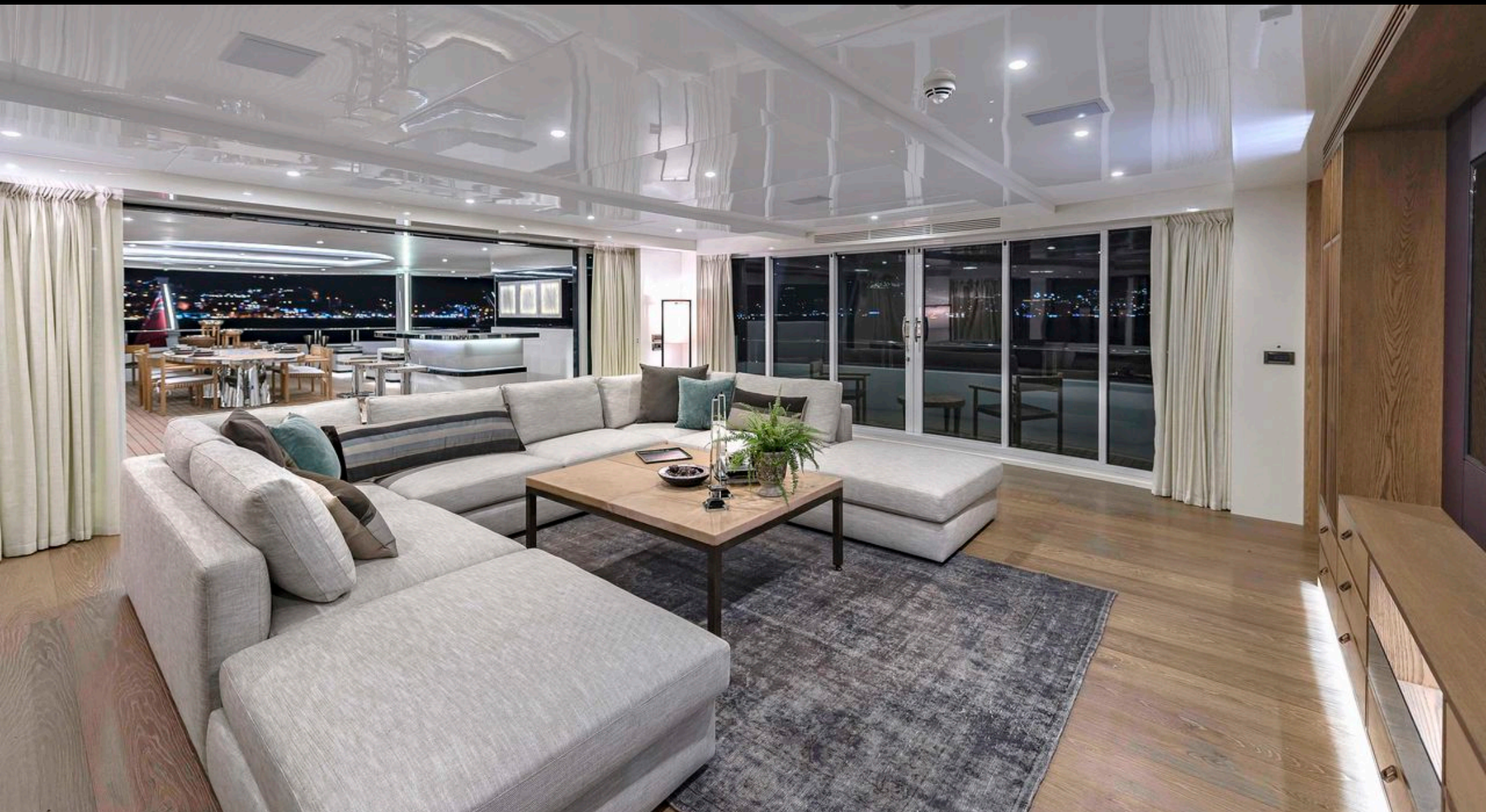




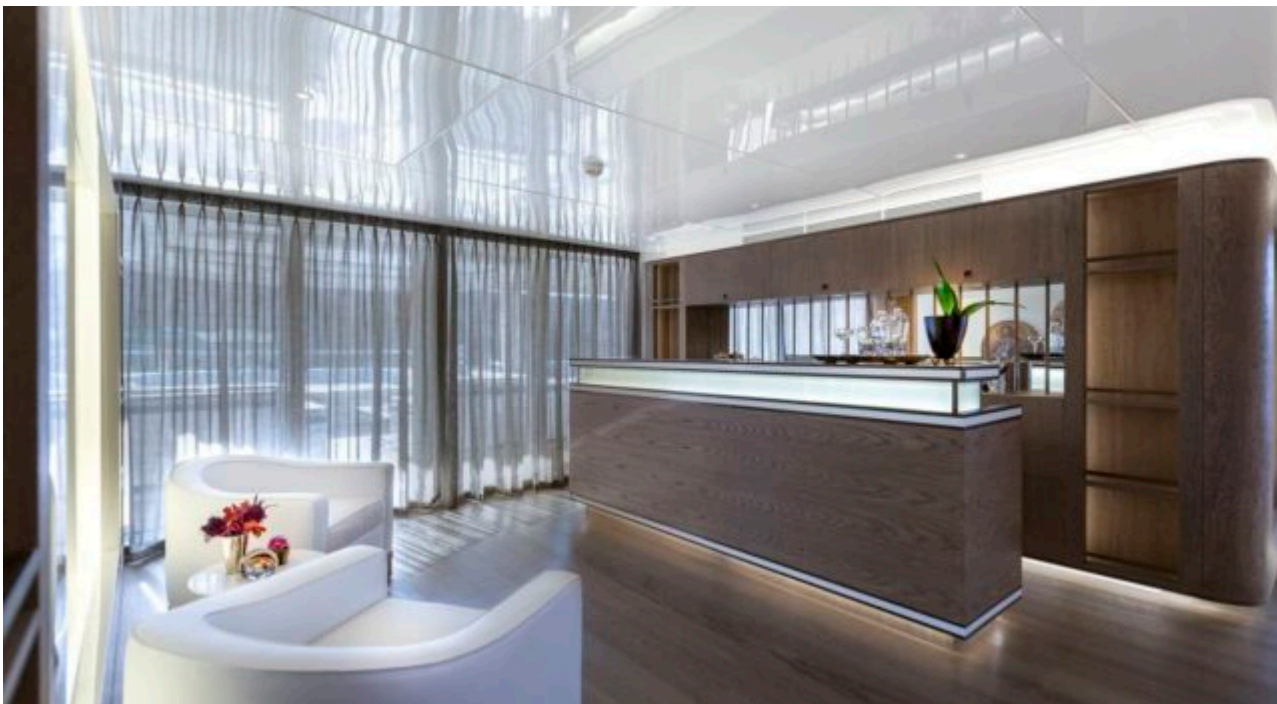


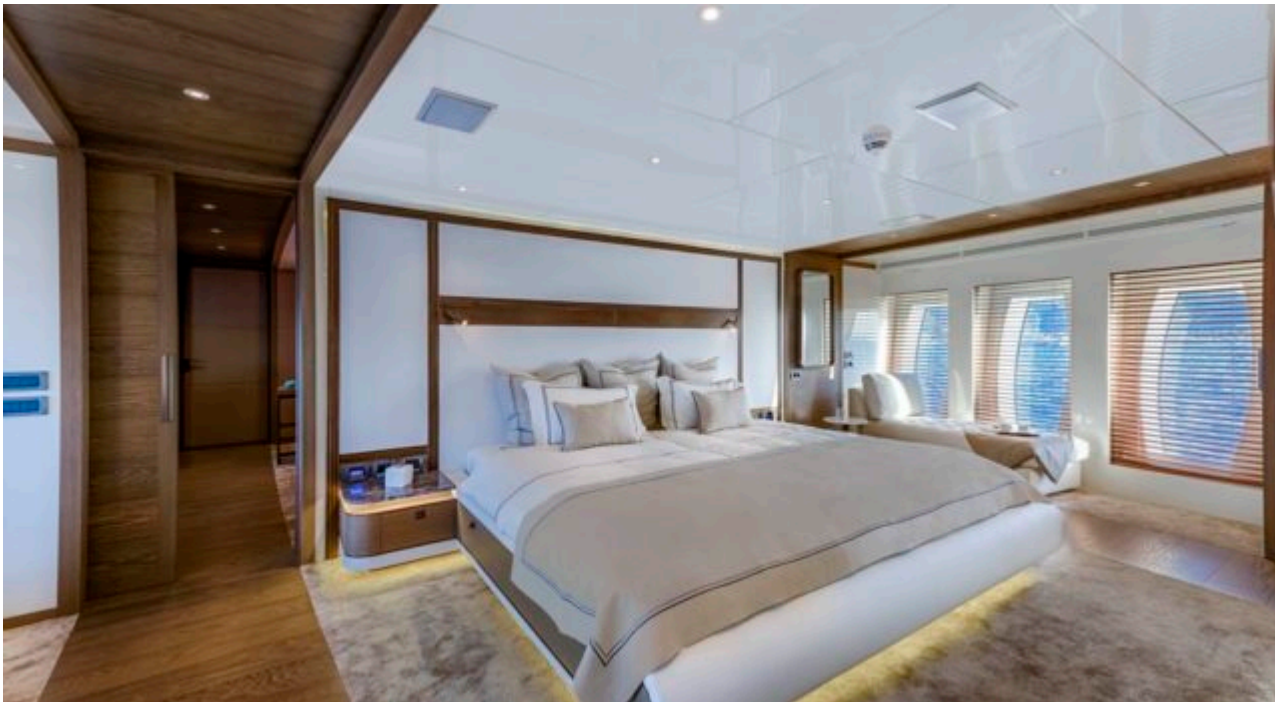
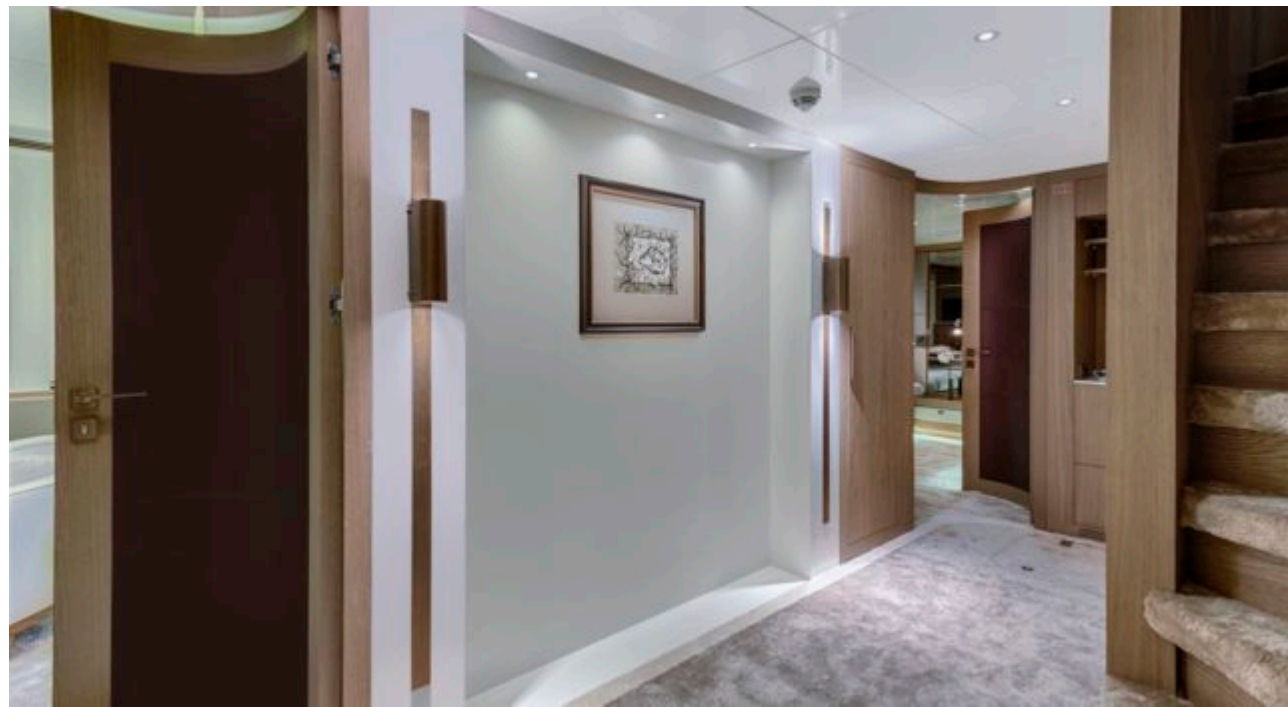


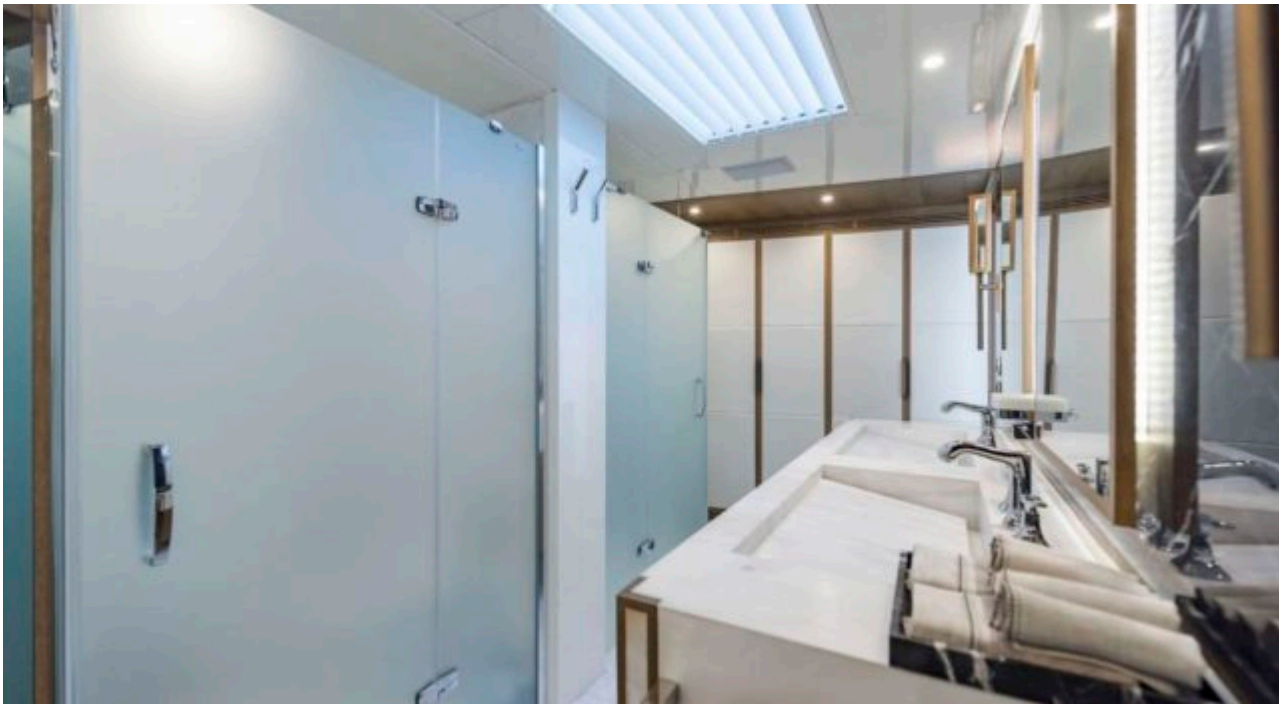
INTERIOR DESIGN

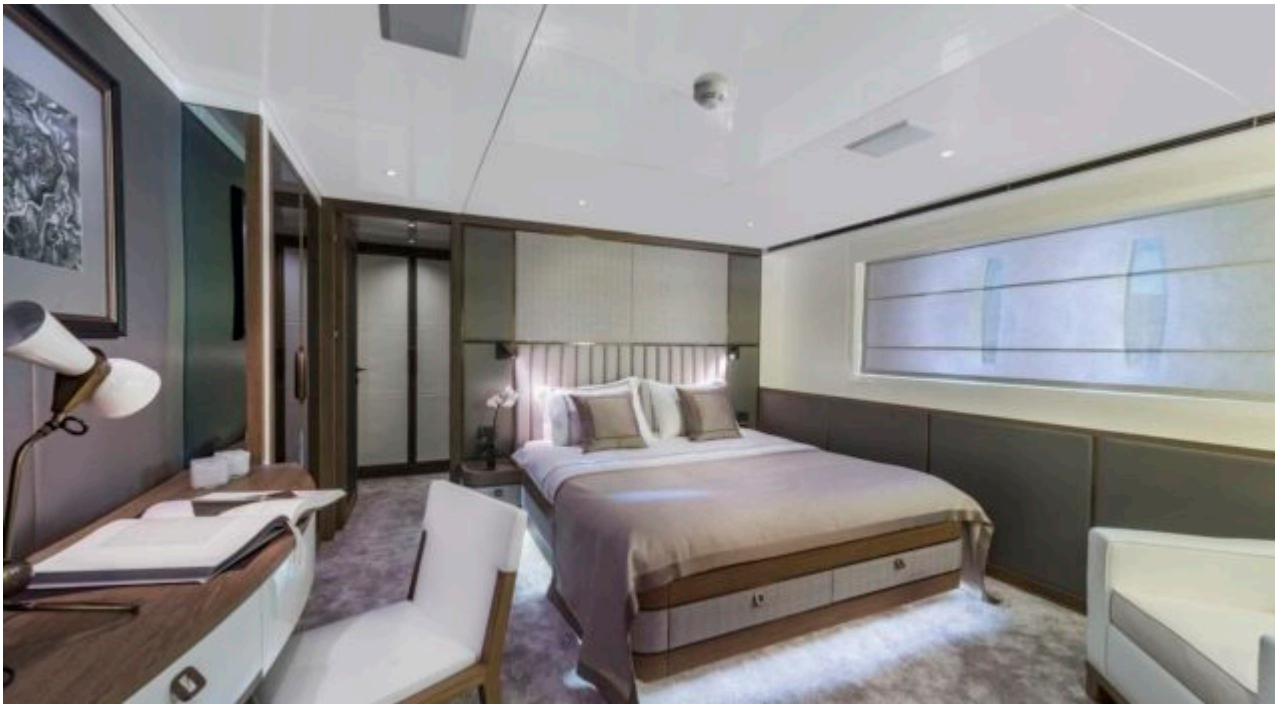


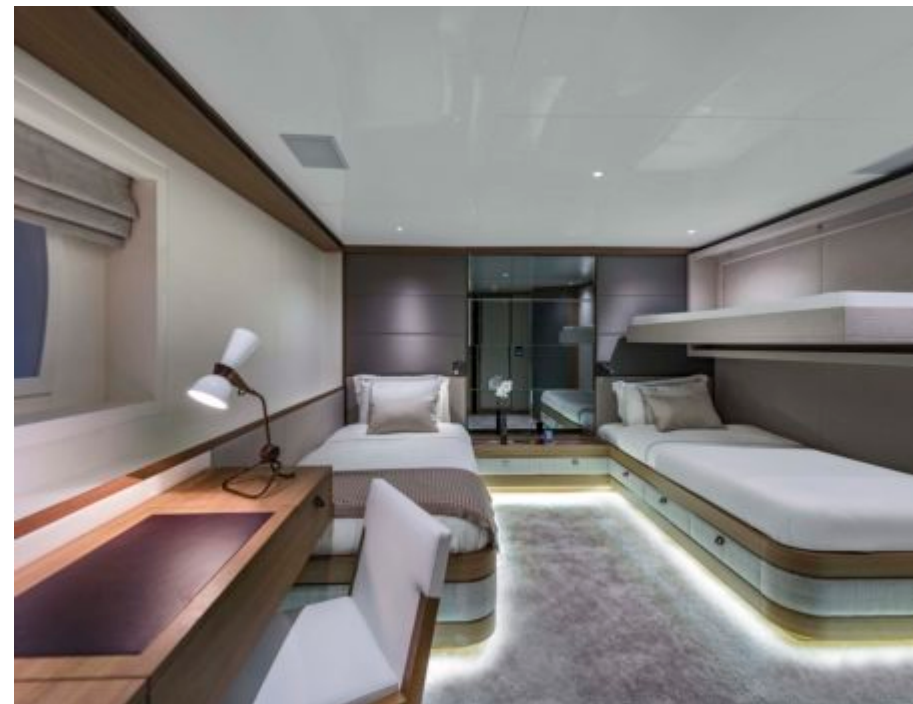
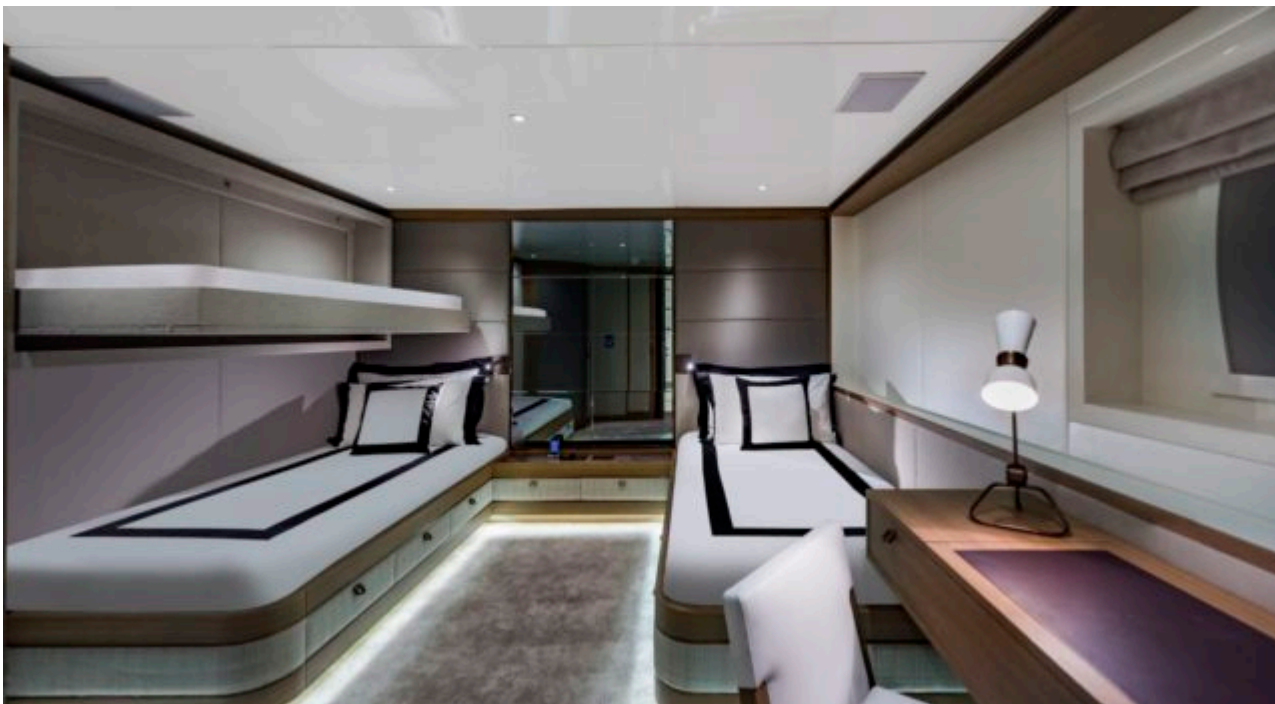
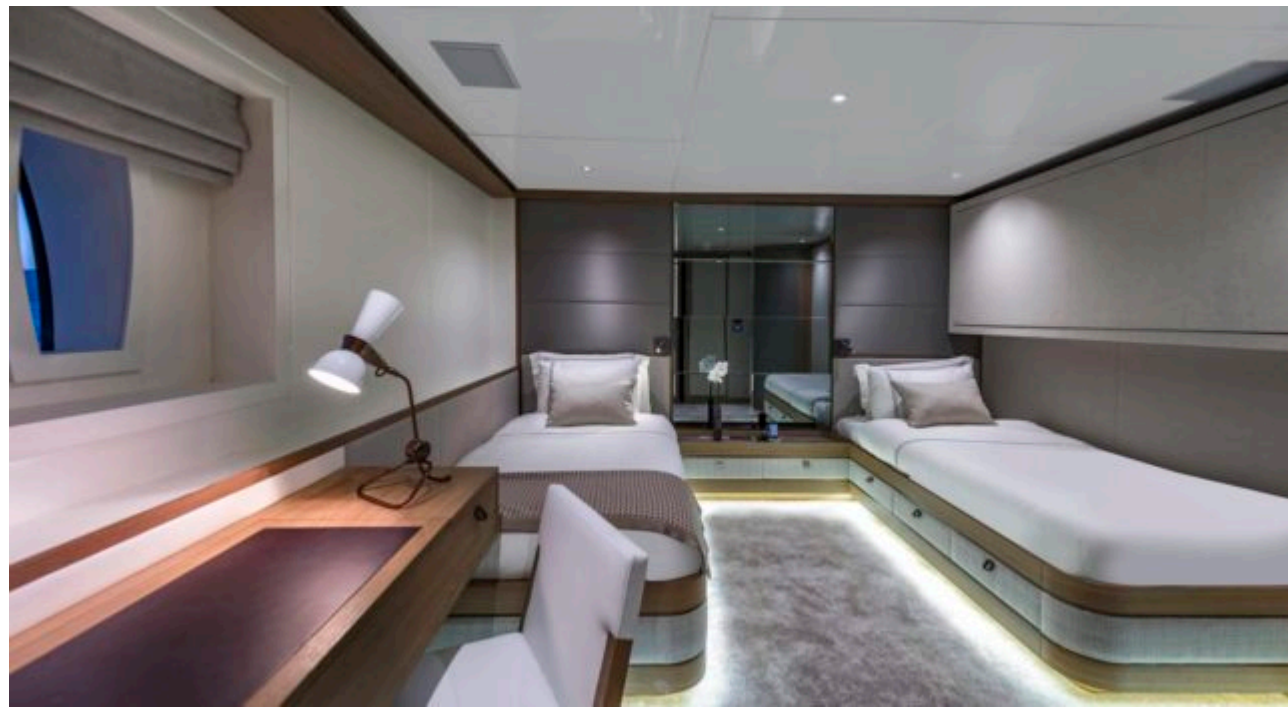








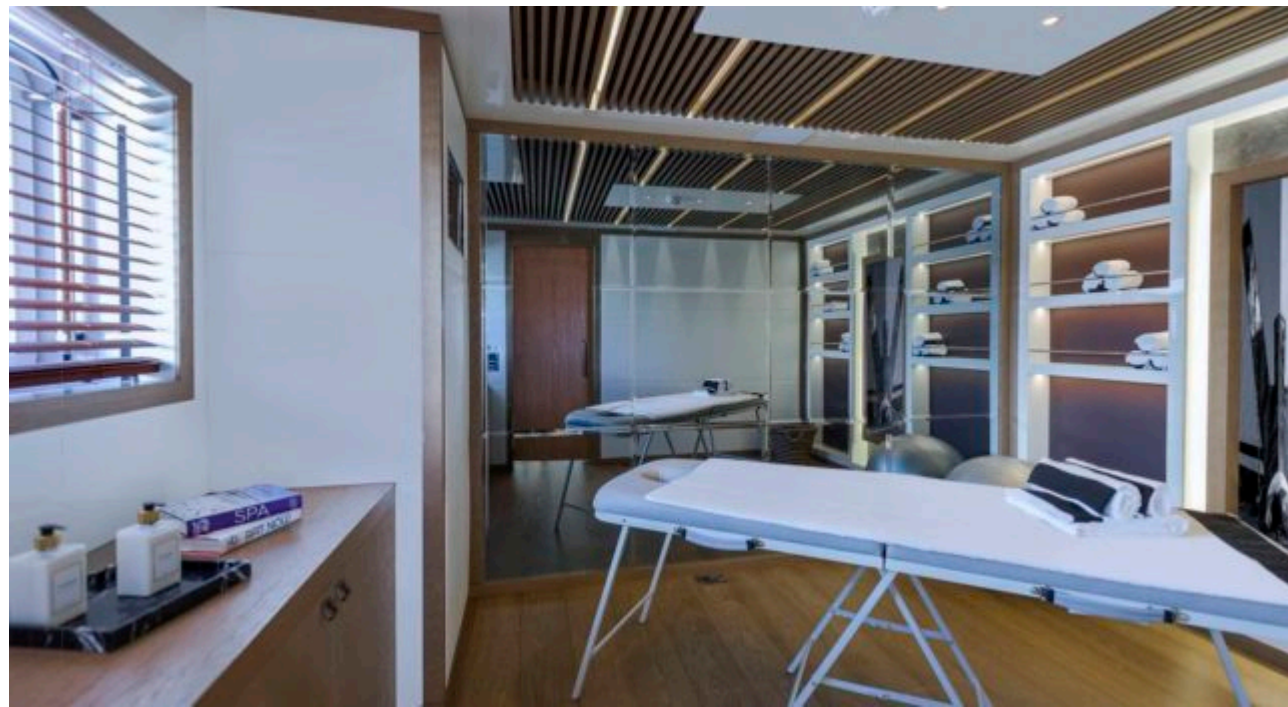
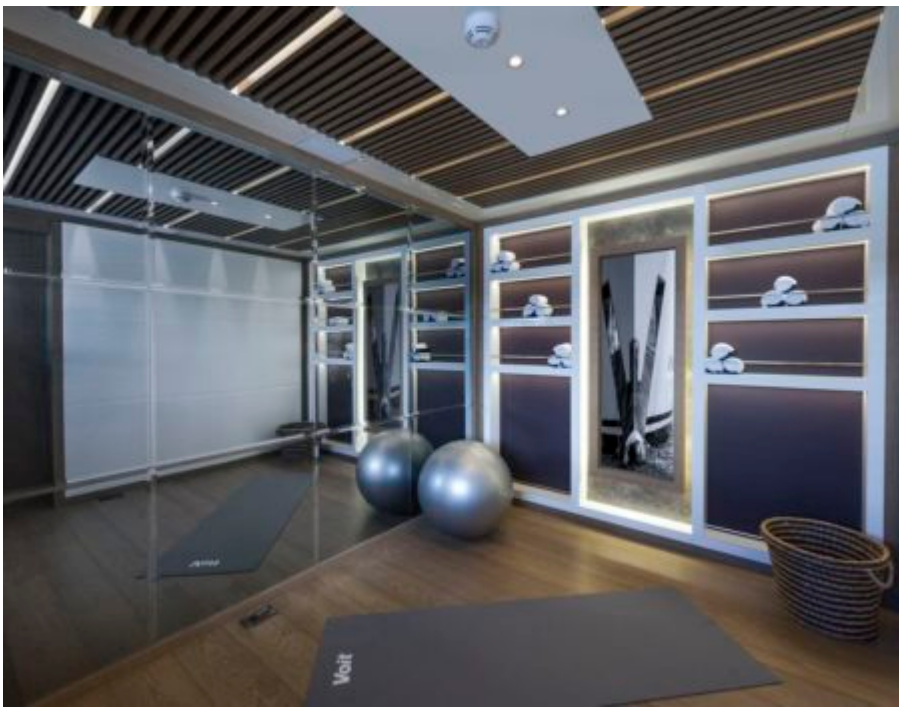






GALLERY LIFESTYLE





Specifications



Low rate per day

32 500 €



High rate per day

36 670 €



Summer low rate per week

210 000 €



Summer high rate per week

250 000 €



Winter low rate per week

210 000 €



Winter high rate per week

250 000 €



Builder

CMB Yachts



Year built

2017



Length

47 m



Guests Cruising

12



Cabins

5

Winter Cruising Area(s)

West Mediterranean

Summer Cruising Area(s)

Corsica - Sardinia, French Riviera, Italy & Sicily, Spain & Balearics, West Mediterranean

Crew

9

Max speed

14 knots

Cruising speed

12 knots

Fuel consumption

380 Litres/Hr

Type of cabins

5 (3 x Double, 2 x Twin, 2 x Pullman)