



M/Y CHAKRA



Length
86m 282.15
ft.



Guests
24
















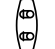








Cabins
20



Crew
30

M/Y CHAKRA

-  8m+ tender boat / day boat
-  Air Conditioning
-  Elevator
-  Flyboard
-  Gym Equipment
-  Jacuzzi
-  Jetsurf
-  kayaks x 3
-  Monoski
-  Paddle Boards x 2
-  Seadoo Seascooter (for diving)
-  Snorkeling Gear
-  Stabilisers underway
-  Tender
-  Towable water toys
-  Wakeboard
-  Water Trampoline
-  Waterski
-  Wifi
-  Knee board
-  Scuba diving
-  Water slide



EXTERIOR DESIGN











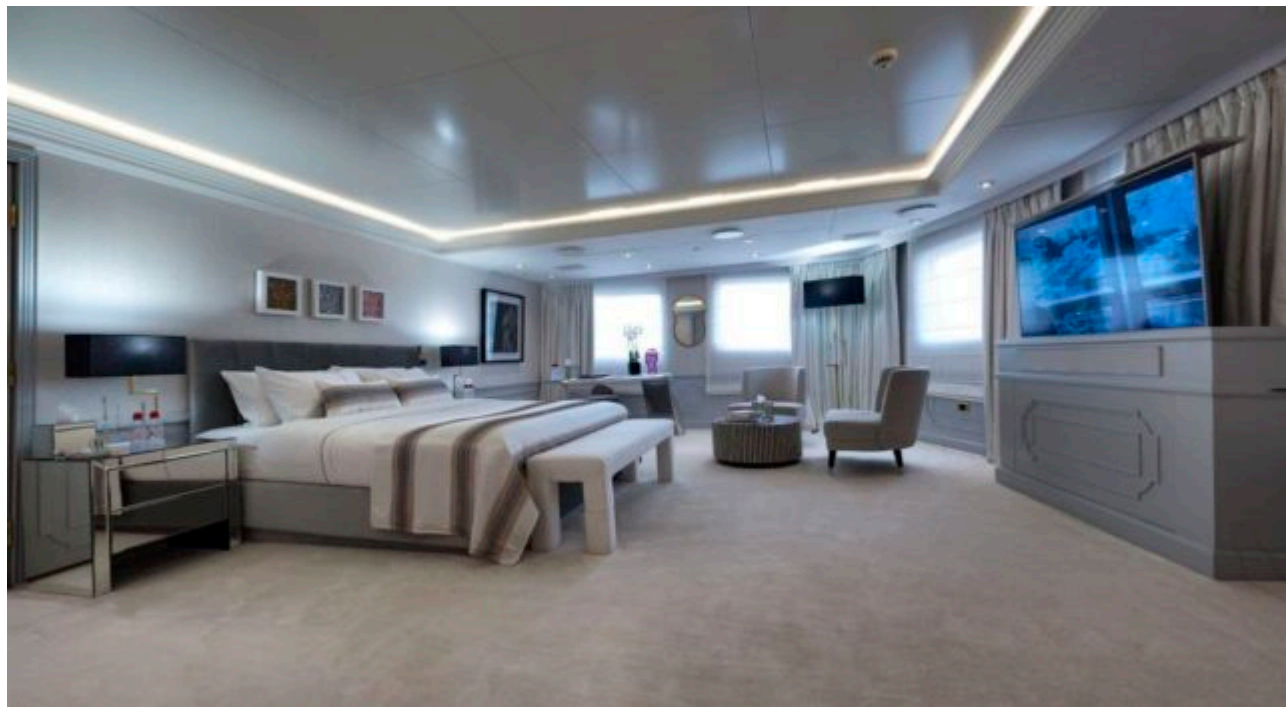
INTERIOR DESIGN









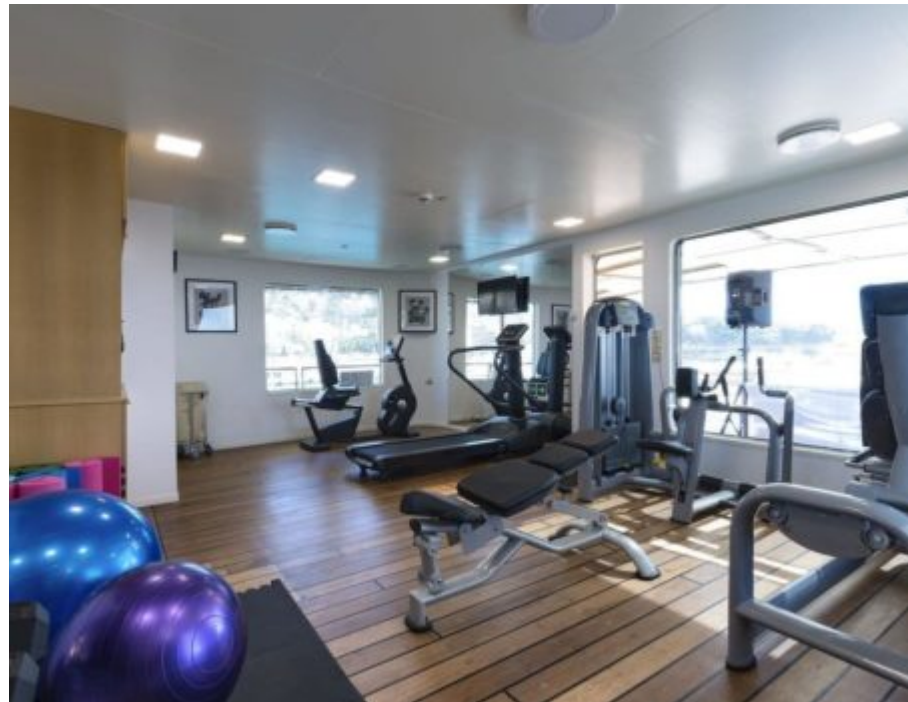
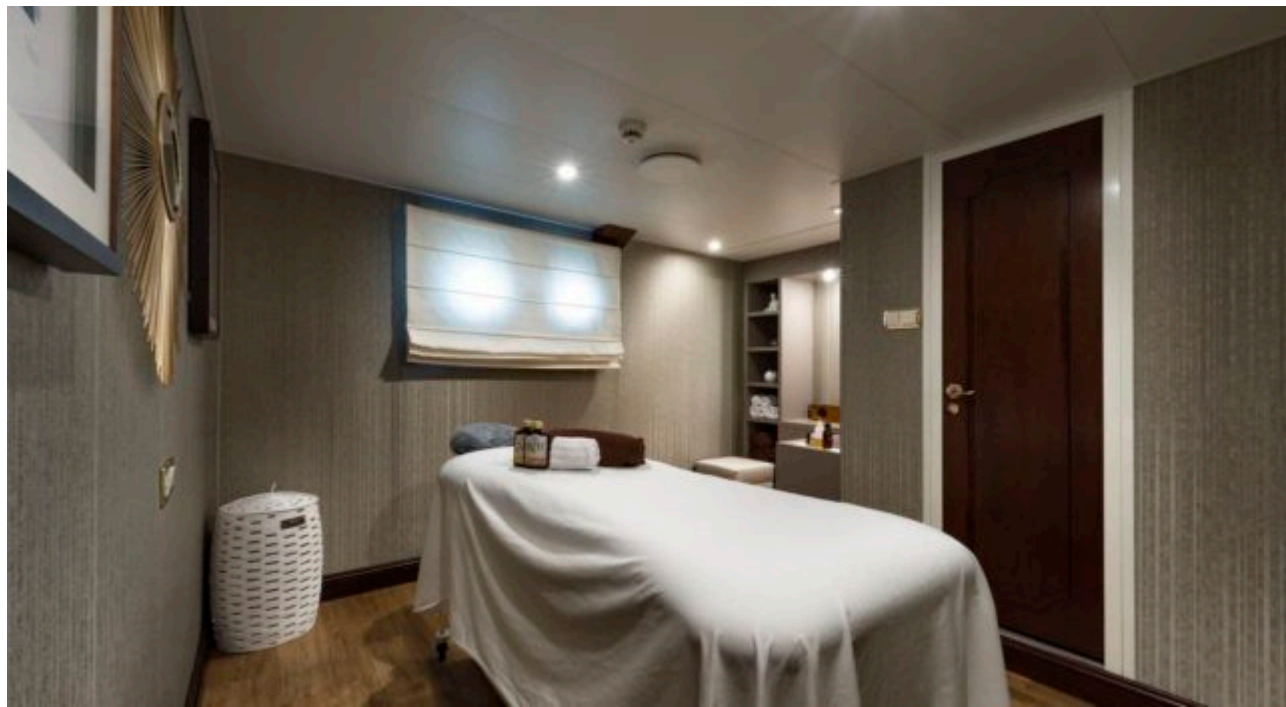






GALLERY LIFESTYLE







Specifications



Low rate per day

82 500 €



High rate per day

82 500 €



Summer low rate per week

495 000 €



Summer high rate per week

495 000 €



Winter low rate per week

495 000 €



Winter high rate per week

495 000 €



Builder

Devonport



Year built

1963



Year refit

2017



Length

86 m



Guests Cruising

24



Cabins

20

Winter Cruising Area(s)

Middle East / Arabia

Summer Cruising Area(s)

Corsica - Sardinia, Croatia, East Mediterranean, French Riviera, Greece, Italy & Sicily, Spain & Balearics, Turkey, West Mediterranean

Crew

30

Max speed

14 knots

Cruising speed

12.8 knots

Fuel consumption

800 Ltr/Hr

Type of cabins

20 (15 x Double, 4 x Twin, 1 x Single)