



M/Y ON TIME



Length
34.16m
112.07 ft.



Guests
10



Cabins
5



Crew
6

M/Y ON TIME

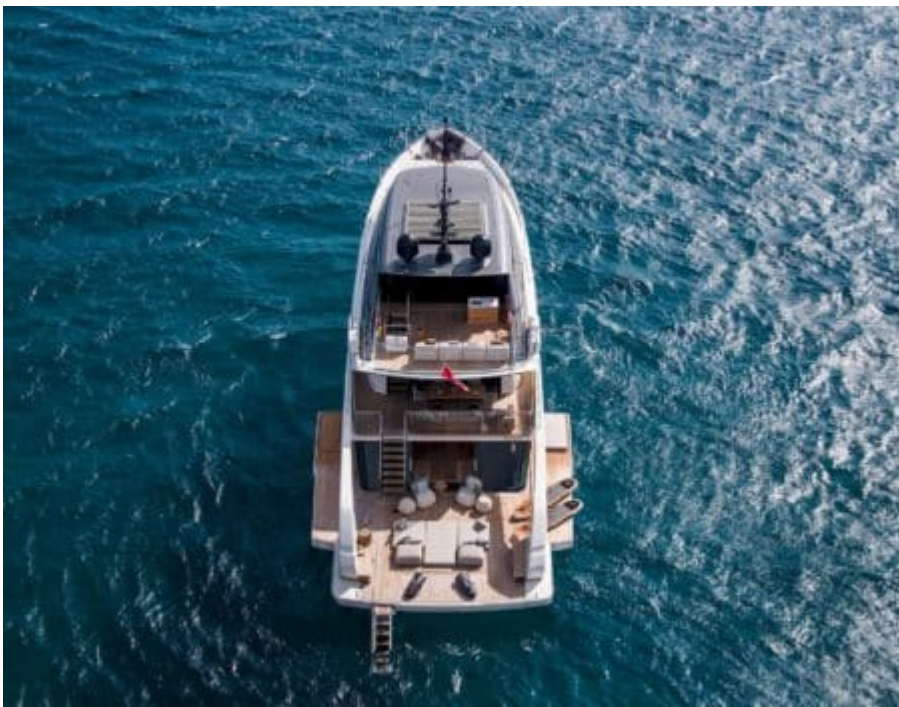
-  Air Conditioning
-  Beach set-up
-  Fishing Gear
-  Gym Equipment
-  Hydraulic platform
-  Jacuzzi
-  Jetski
-  Paddle Boards x 2
-  Snorkeling Gear
-  Sound System
-  Stabilisers at anchor
-  Stabilisers underway
-  Television
-  Tender
-  Towable water toys
-  Wakeboard
-  Waterski
-  Yoga mats



EXTERIOR DESIGN





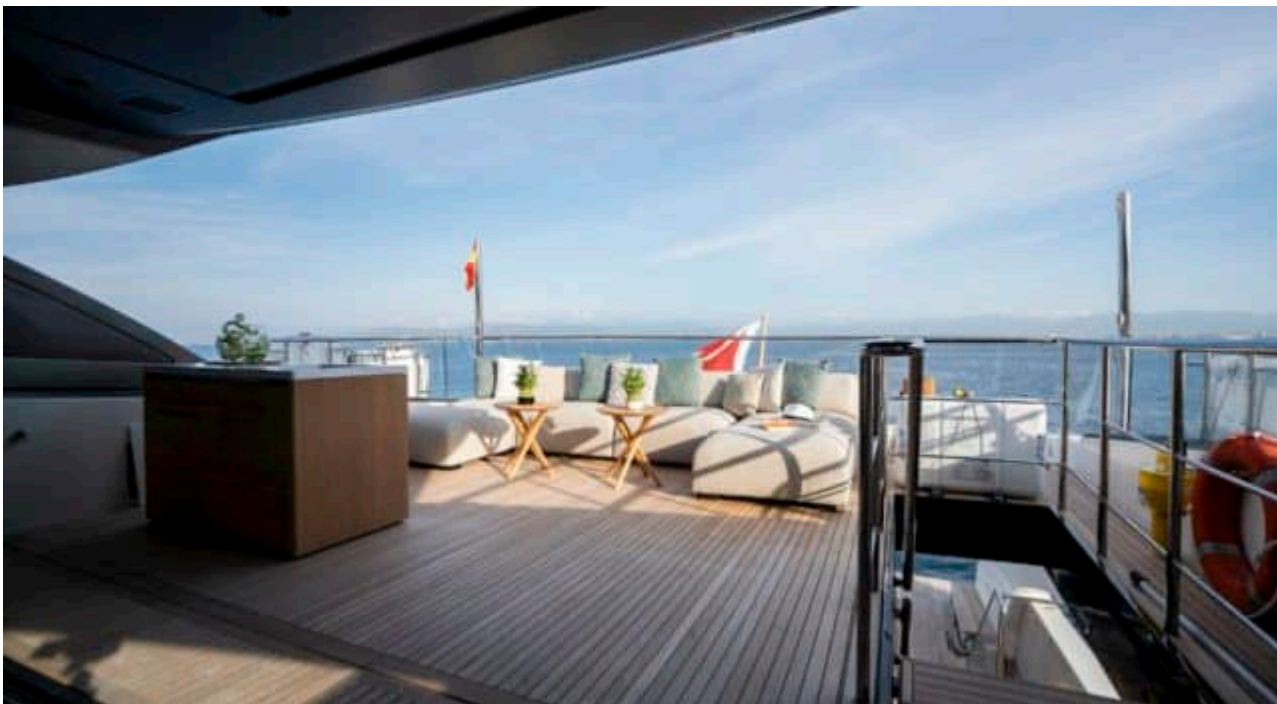










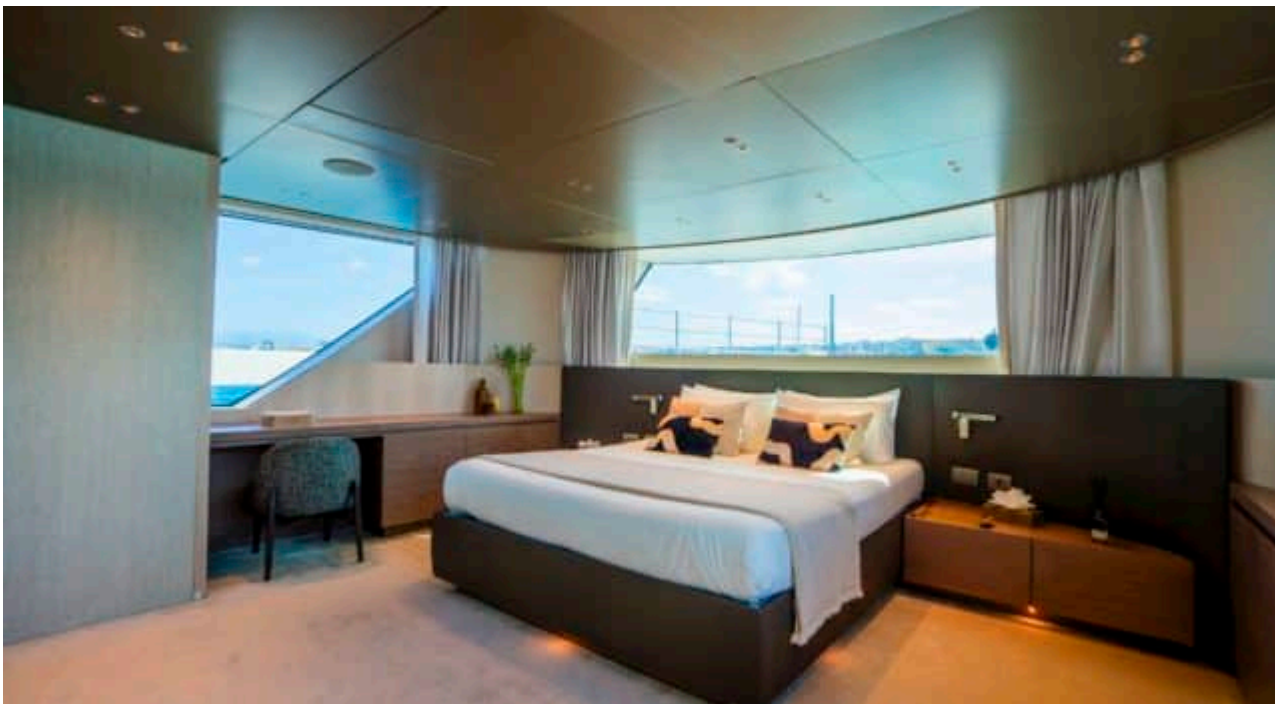
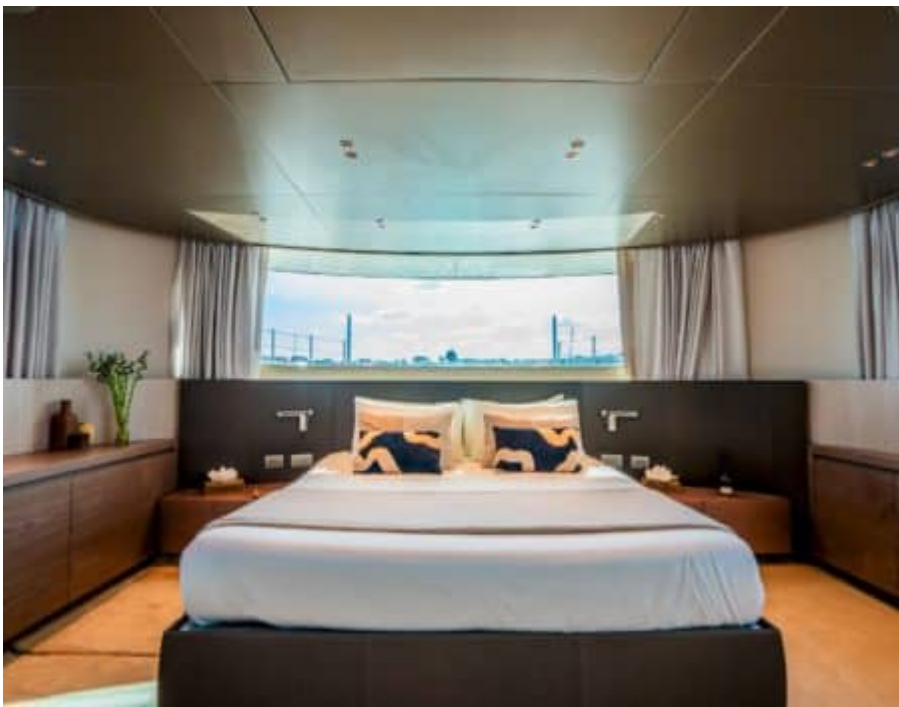


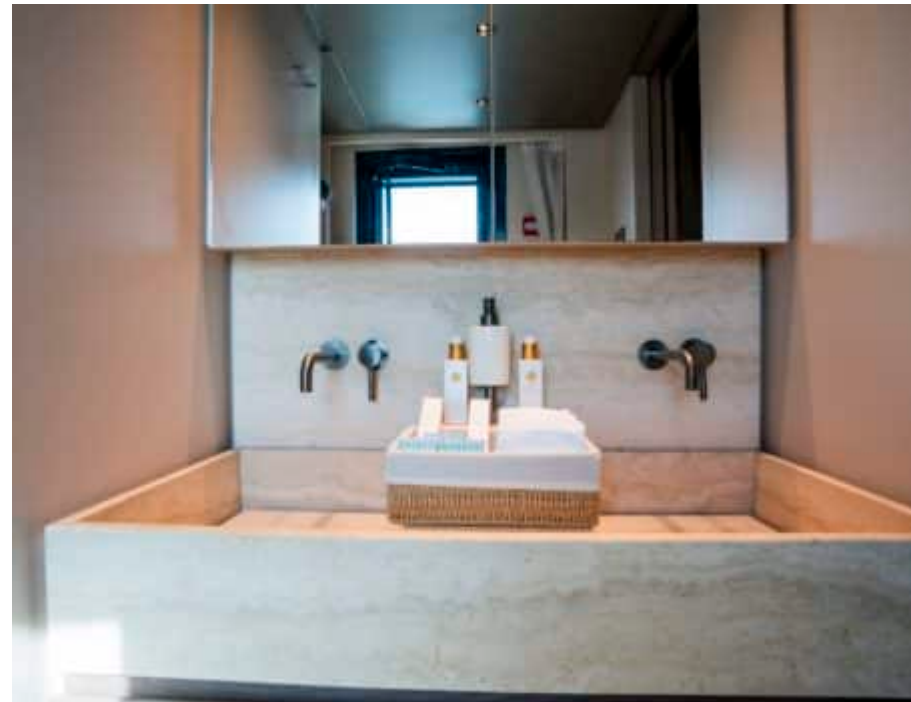
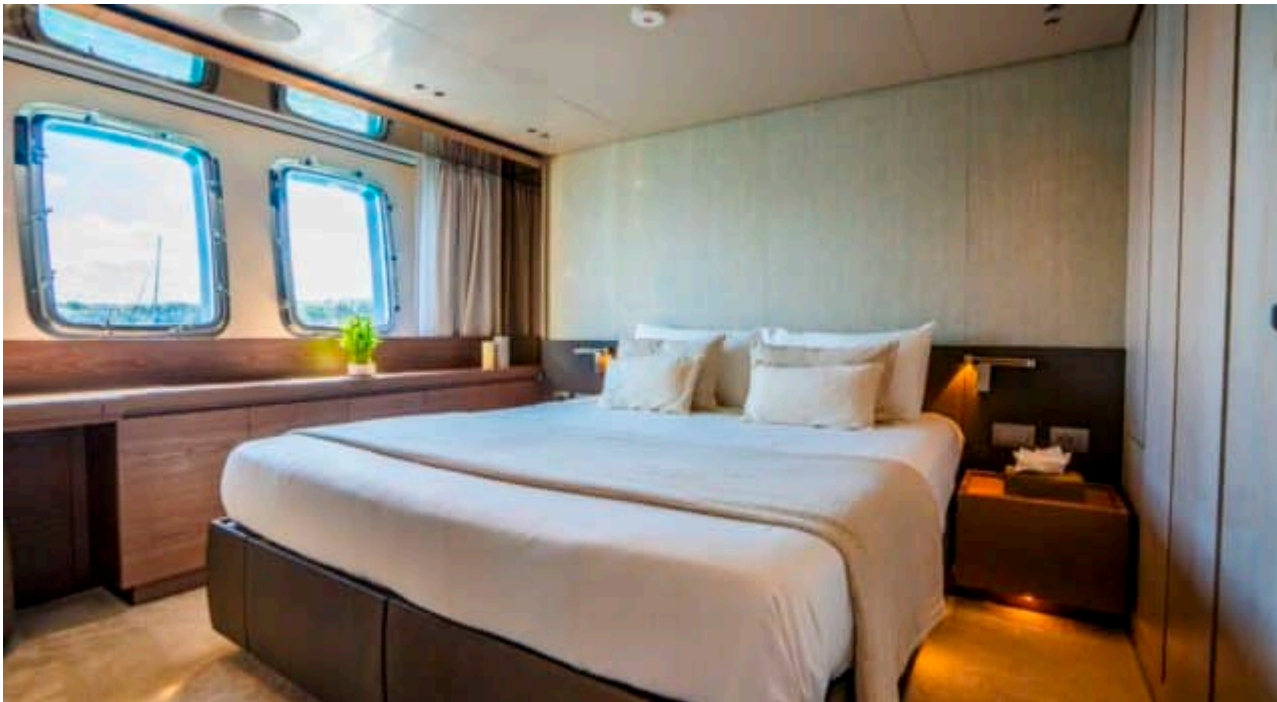
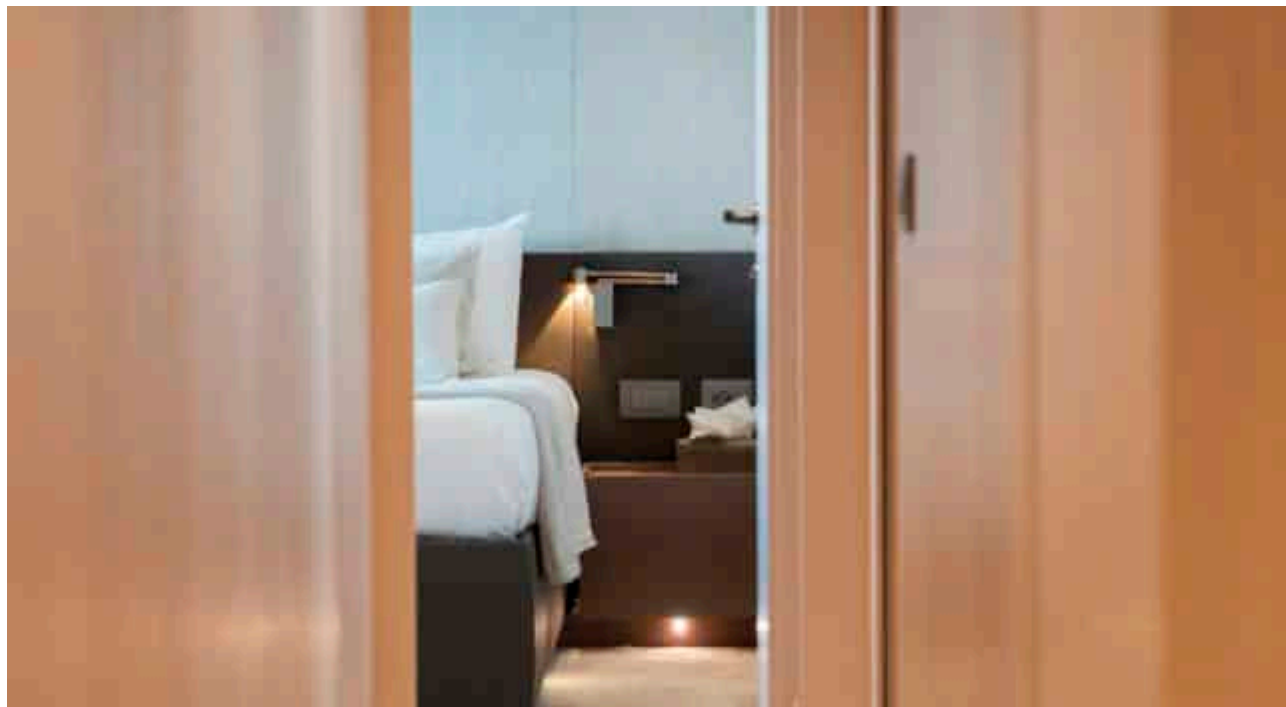


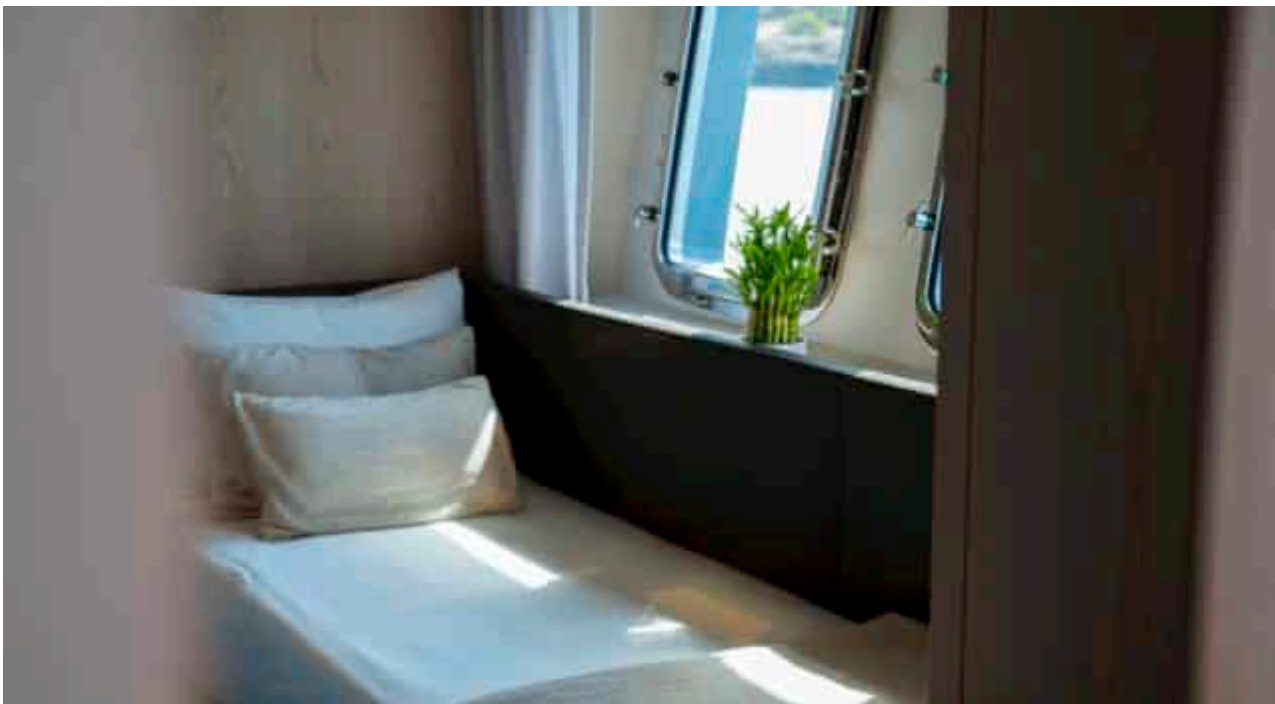
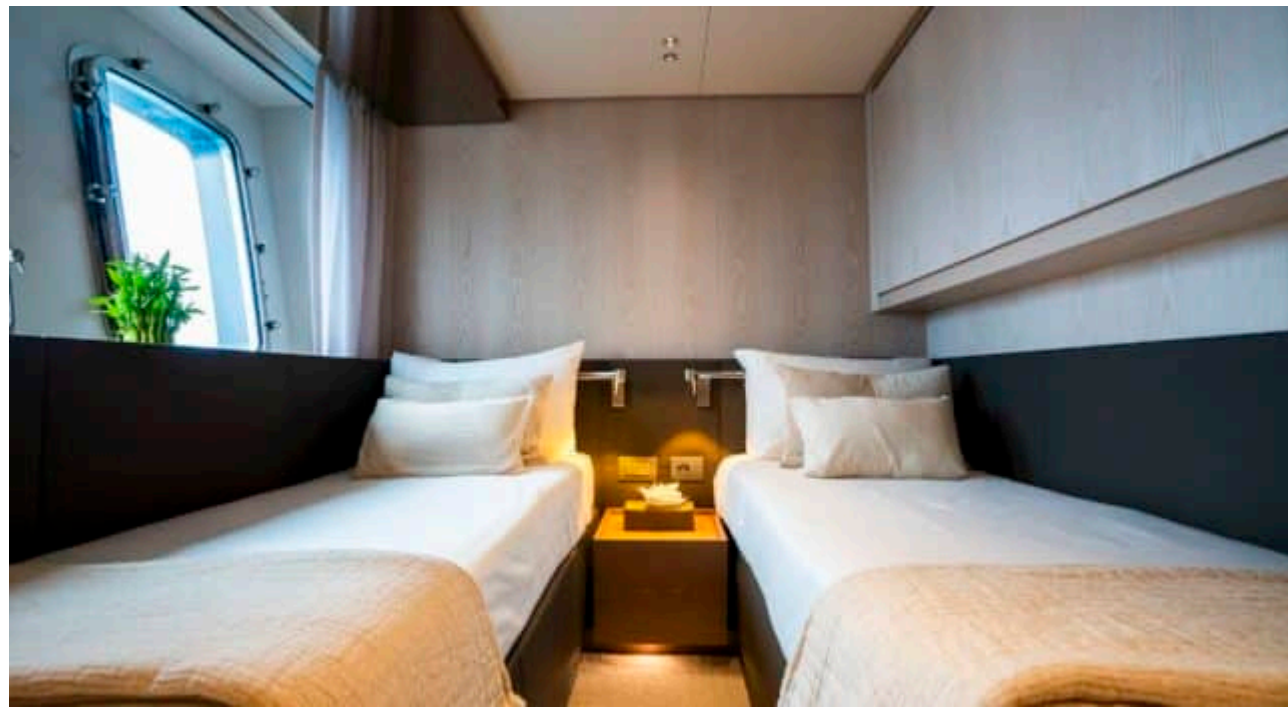
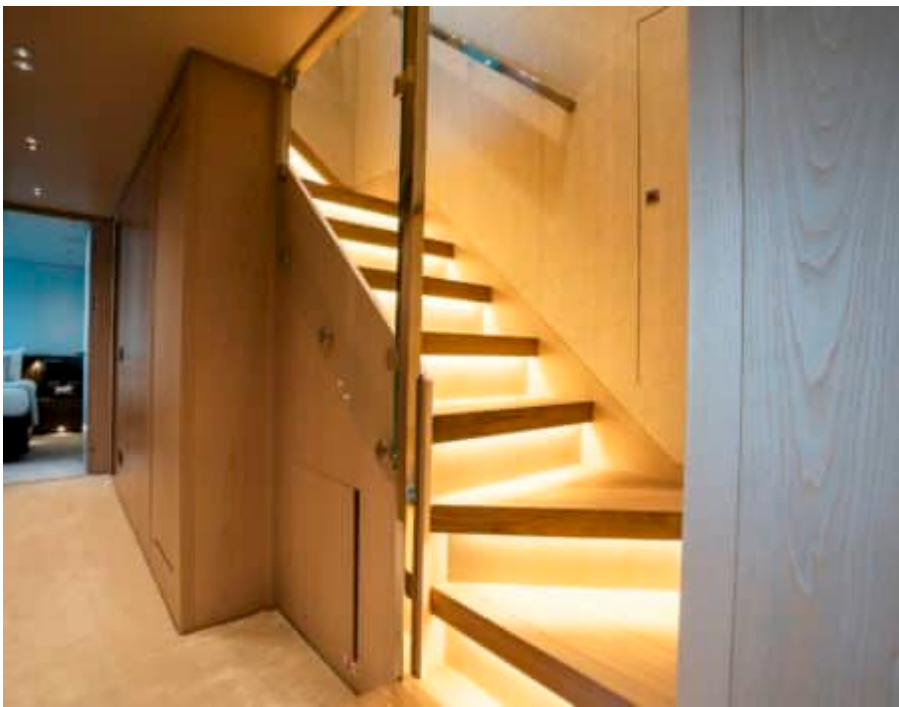
INTERIOR DESIGN











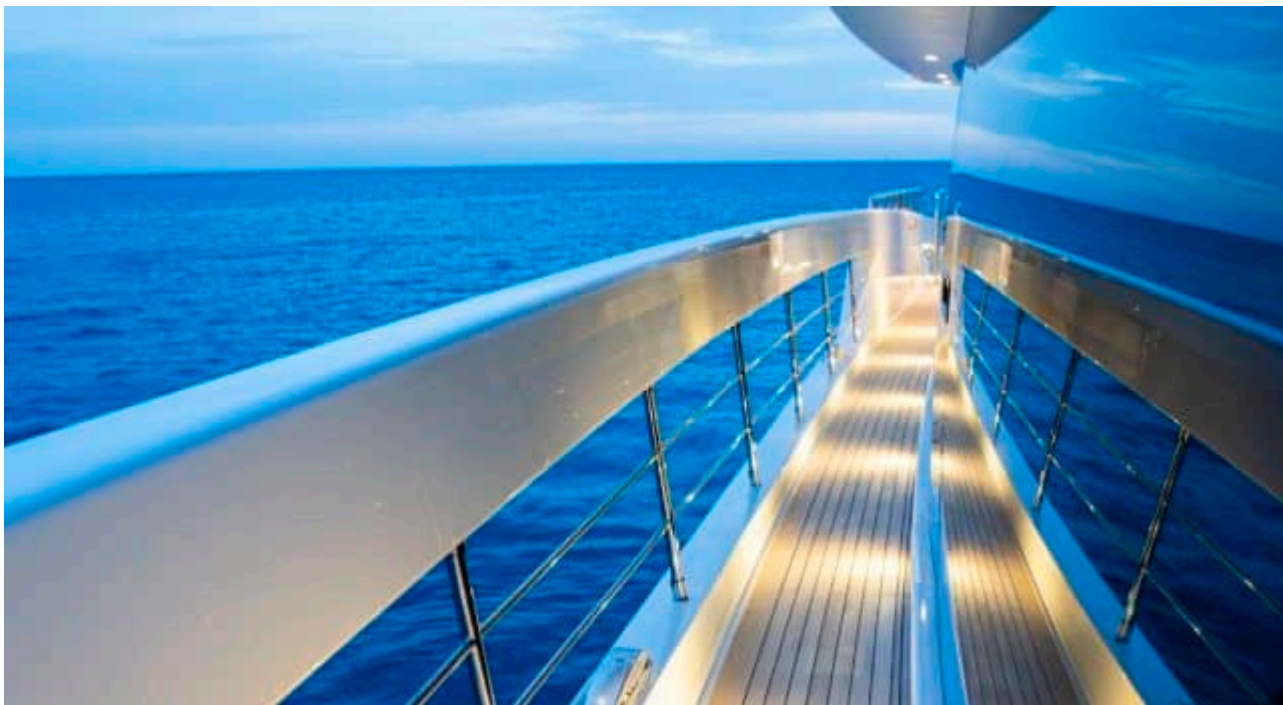


GALLERY LIFESTYLE

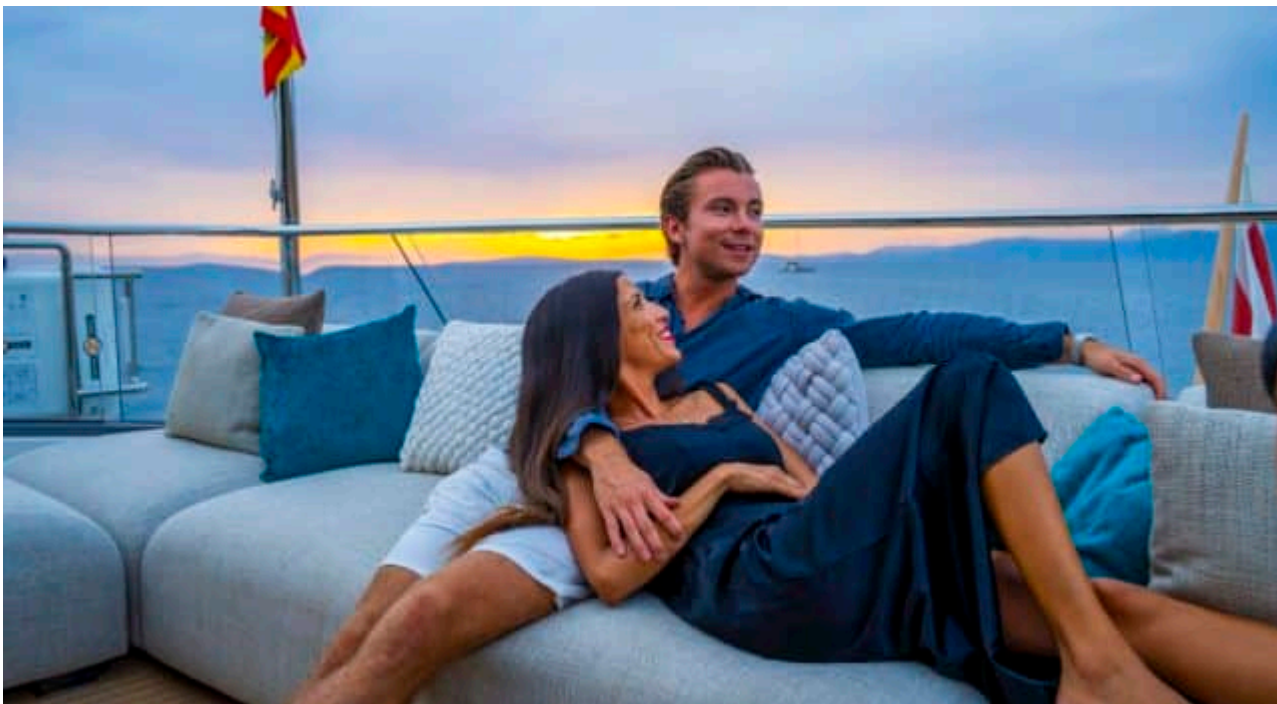






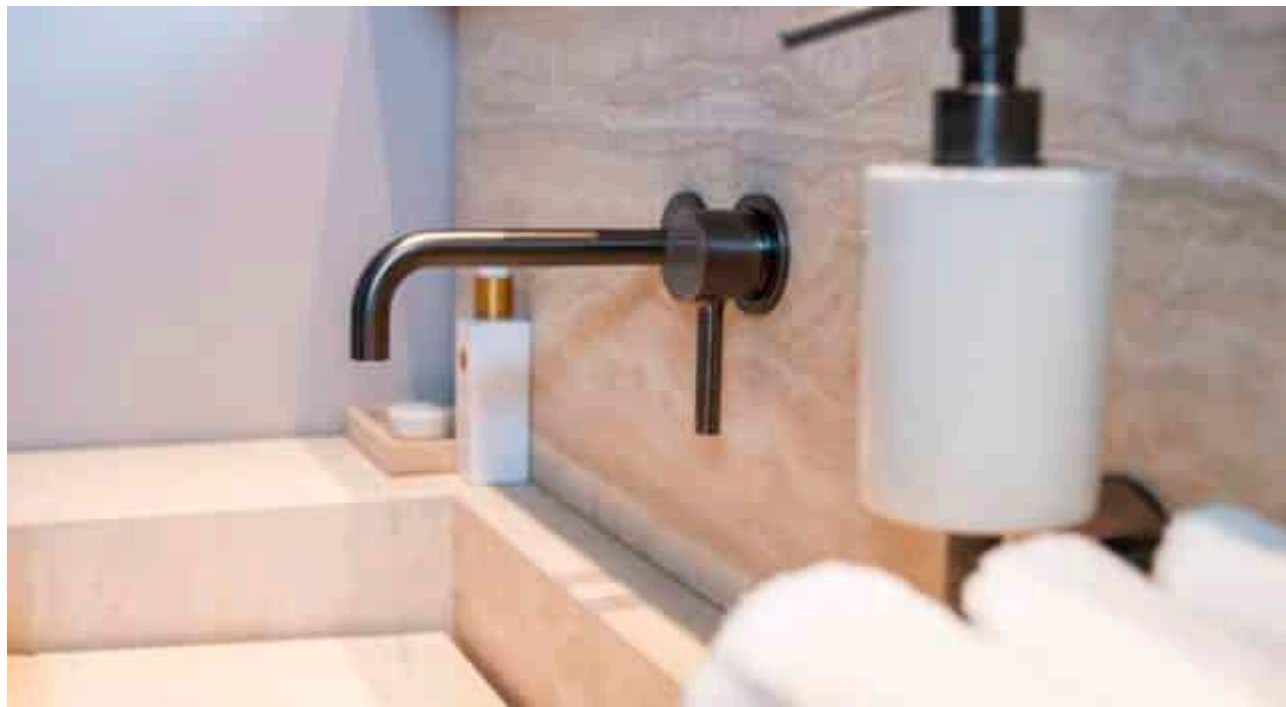
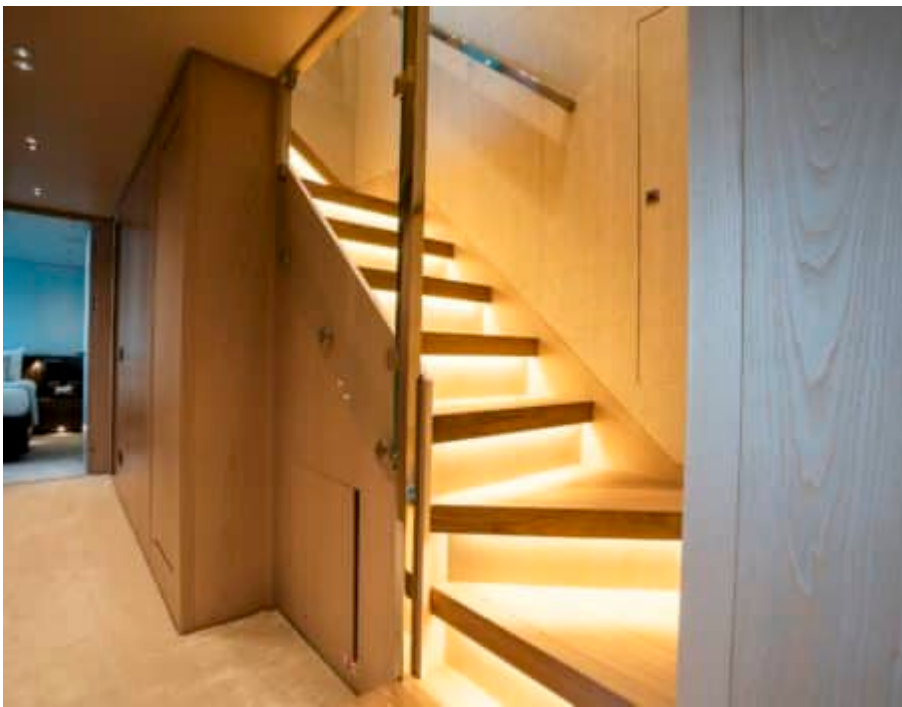














Specifications



Summer low rate per week

120 000 €



Summer high rate per week

135 000 €



Winter low rate per week

120 000 €



Winter high rate per week

135 000 €



Builder

Sanlorenzo



Year built

2024



Length

34.16 m



Guests Cruising

10



Cabins

5

Winter Cruising Area(s)

Corsica - Sardinia, French Riviera, Italy & Sicily, Spain & Balearics, West Mediterranean

Summer Cruising Area(s)

Corsica - Sardinia, French Riviera, Italy & Sicily, Spain & Balearics, West Mediterranean

Crew

6

Max speed

23 knots

Cruising speed

12 knots

Fuel consumption

167 L/H

Type of cabins

5 (3 x Double, 2 x Twin)