



M/Y EXTRA TIME



Length
44.27m 145.24 ft.



Guests
10




















Cabins
5



Crew
9

M/Y EXTRA TIME

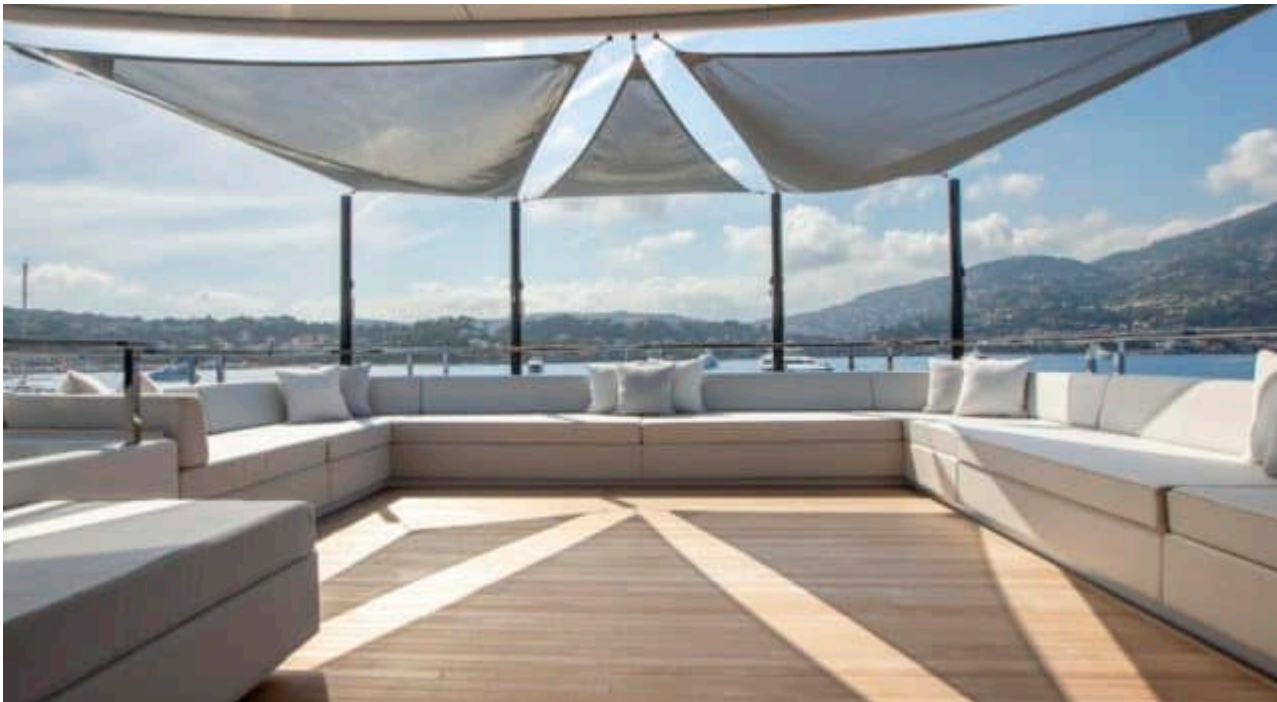
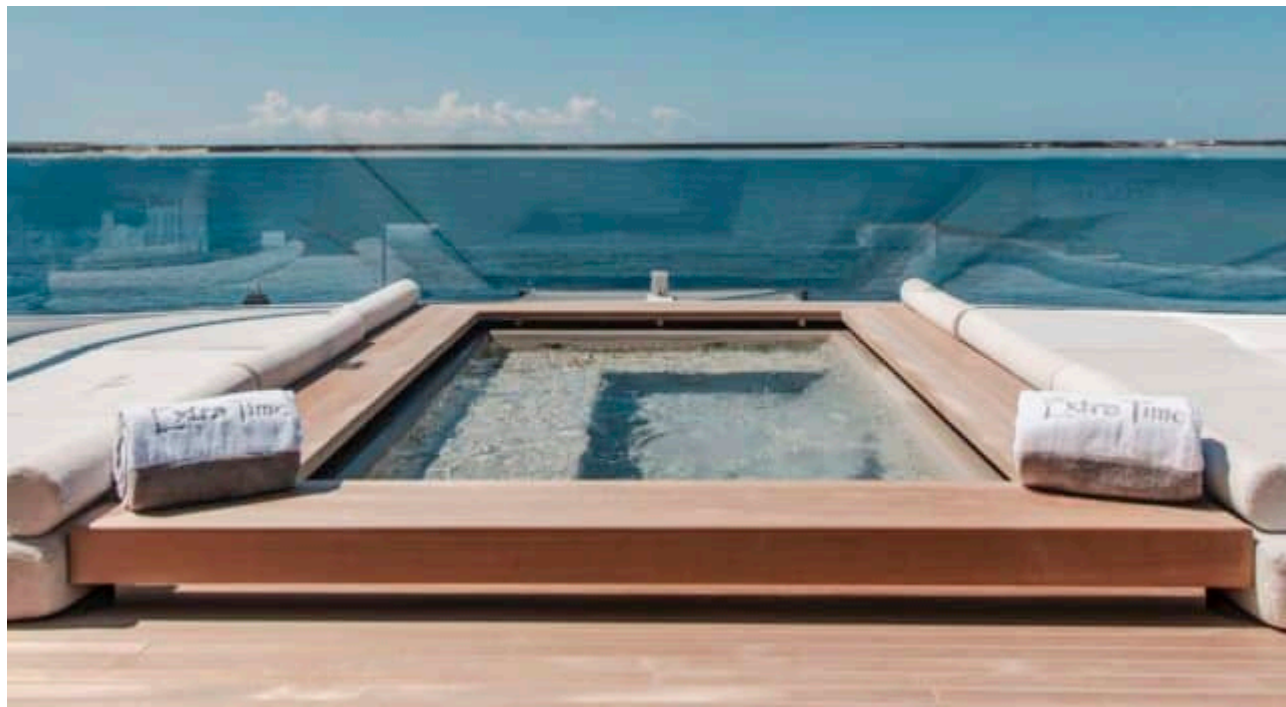
-  Air Conditioning
-  Apple TV
-  E-Foil
-  Electric bicycle
-  Jacuzzi
-  Jetski x 2
-  Jetsurf
-  Seabob x 3
-  Snorkeling Gear
-  Sound System
-  Stabilisers at anchor
-  Stabilisers underway
-  Surf Board
-  Television
-  Tender
-  Wifi
-  Windsurf



EXTERIOR DESIGN



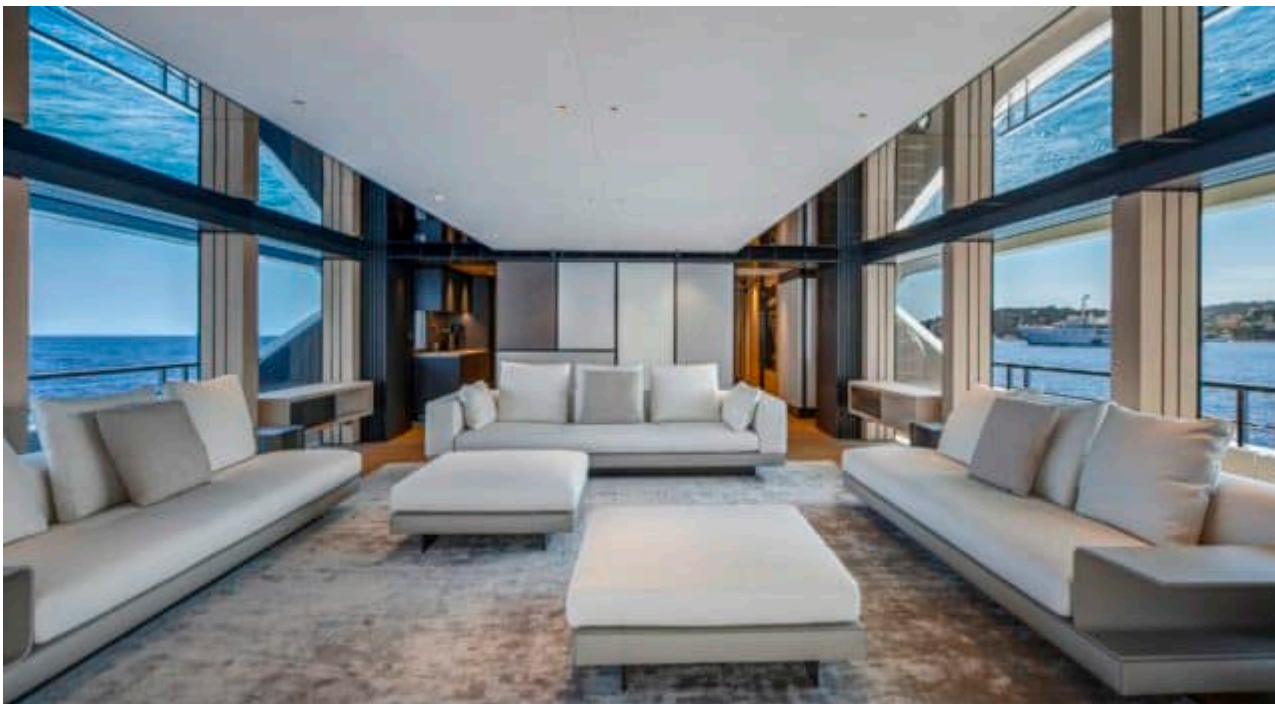
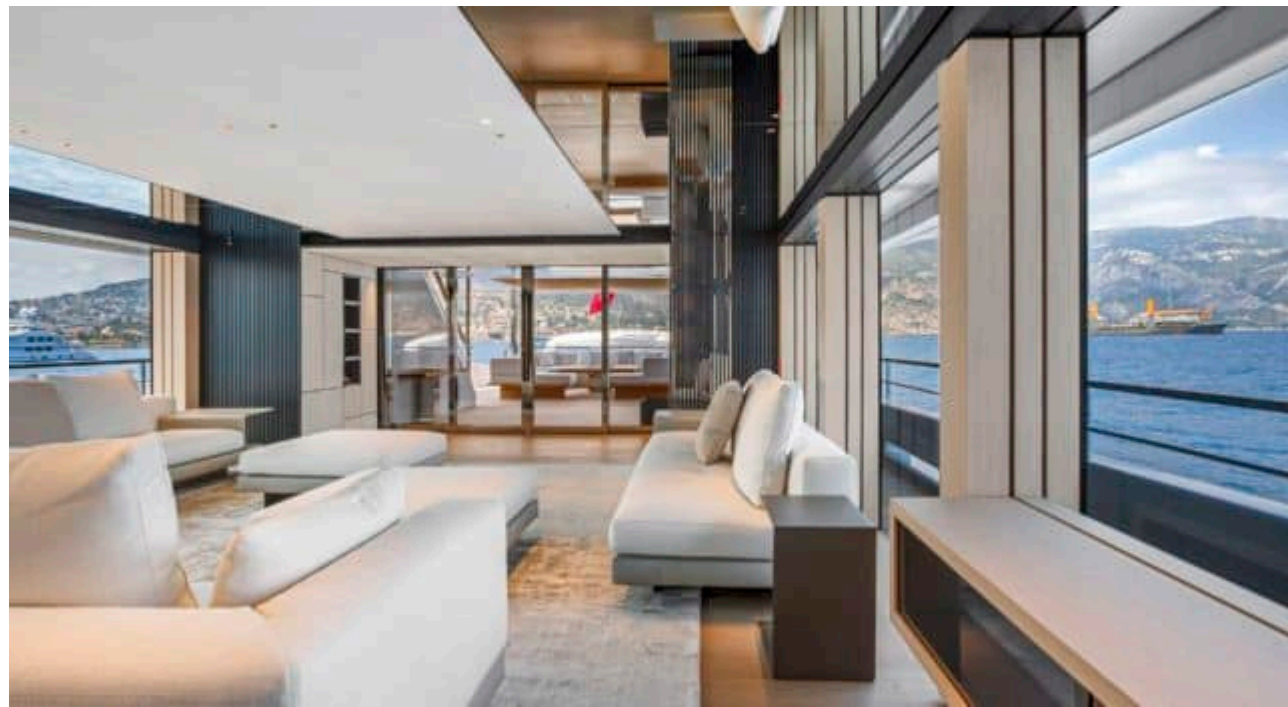


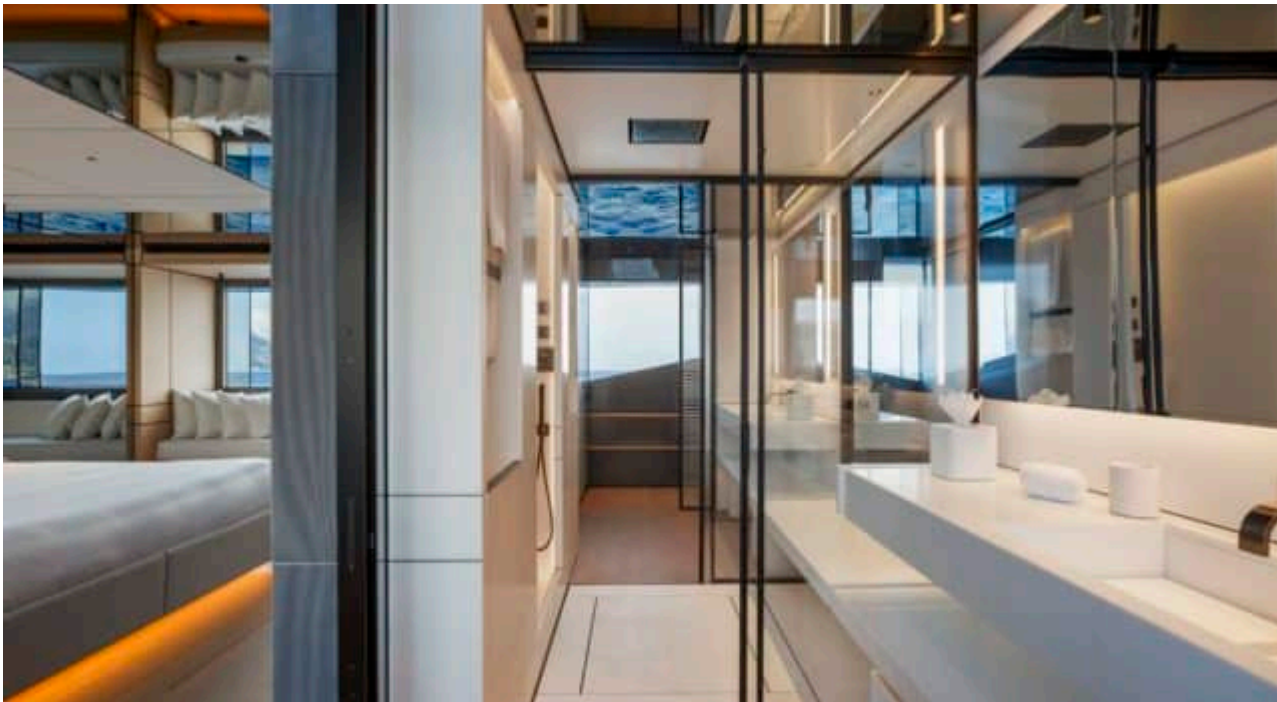


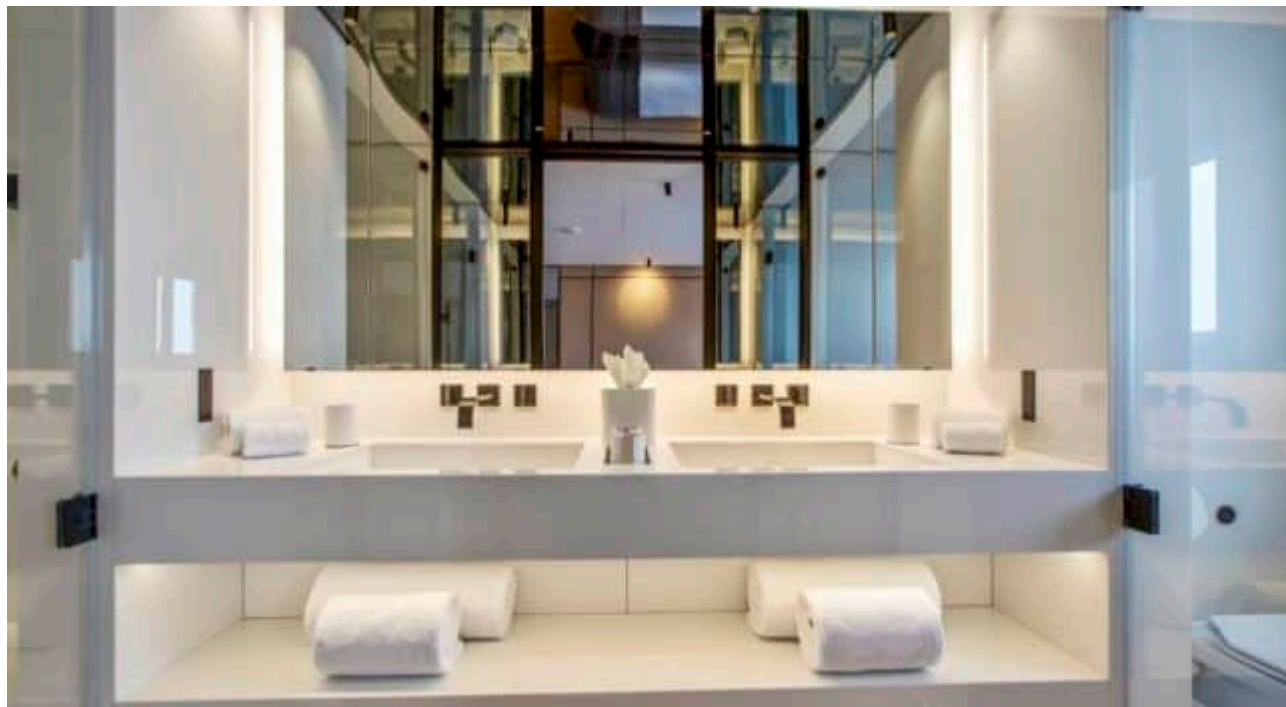
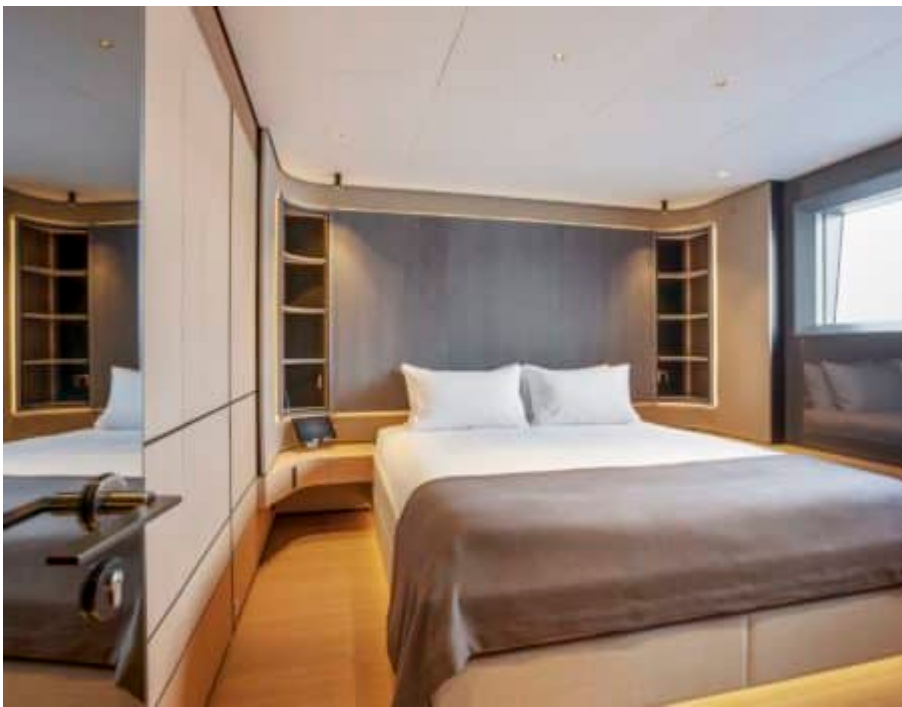


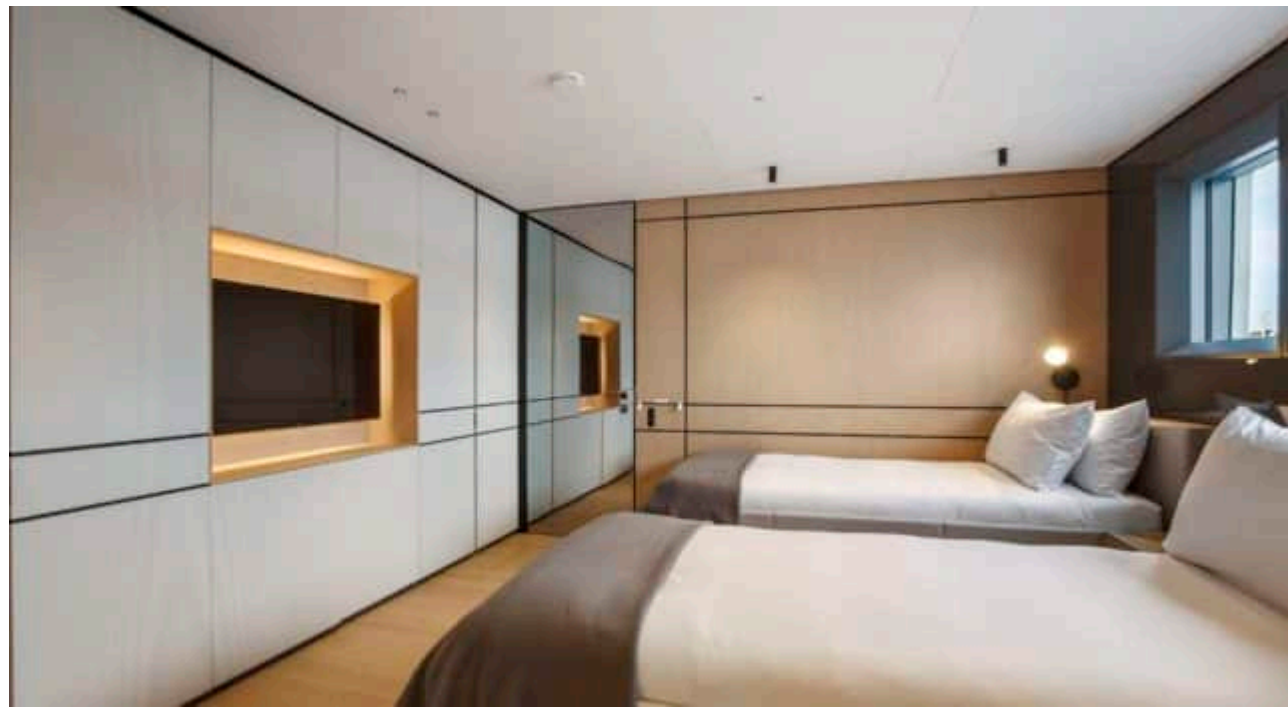
INTERIOR DESIGN





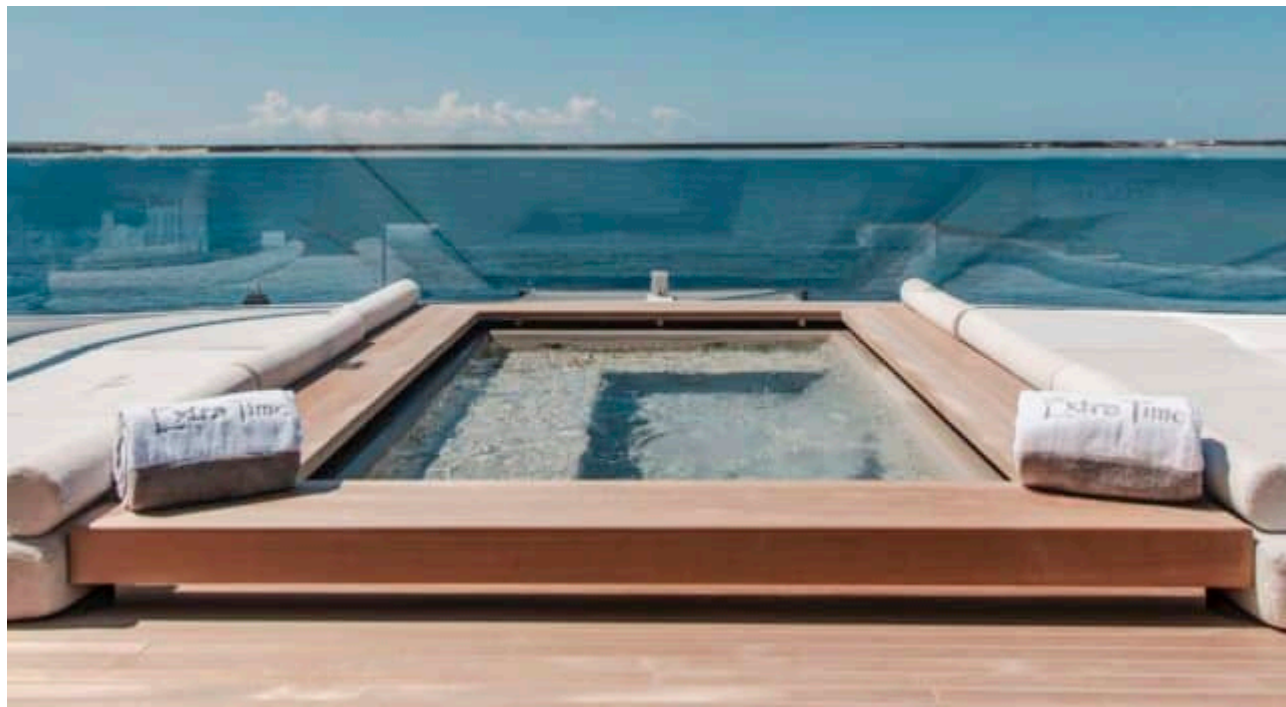


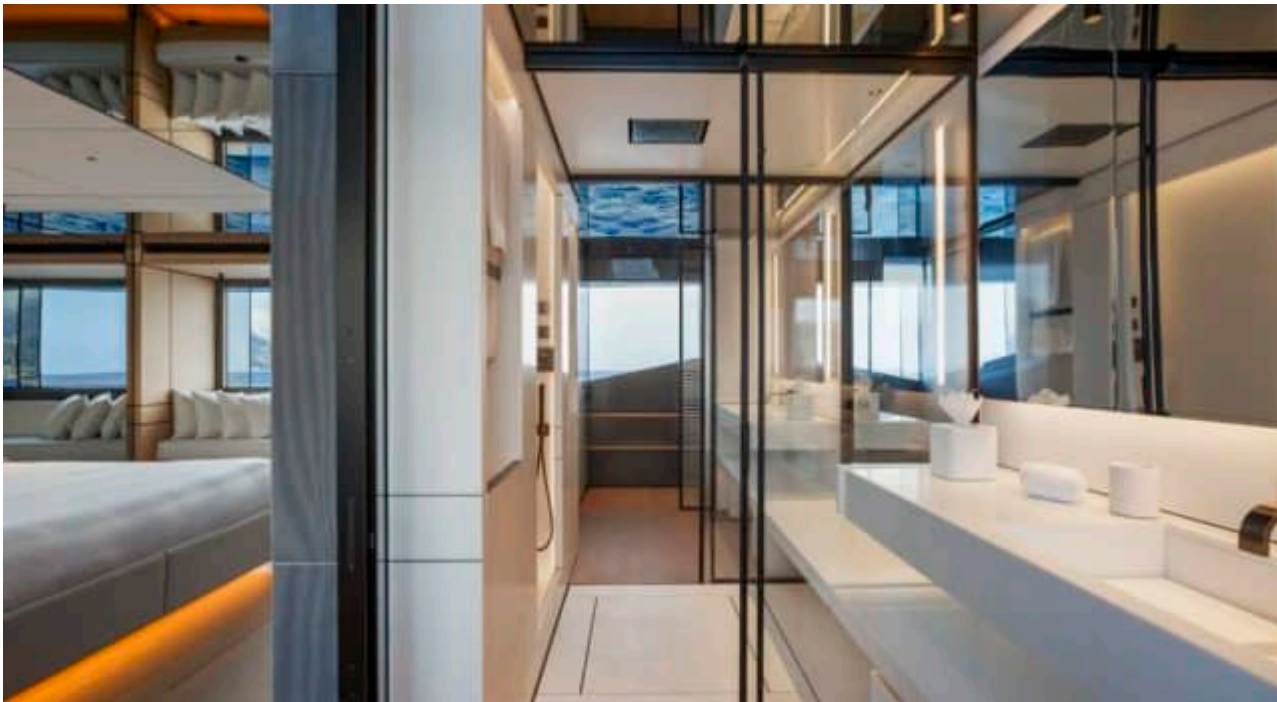




GALLERY LIFESTYLE









Specifications



Summer low rate per week
240 000 €



Summer high rate per week
285 000 €



Winter low rate per week
0 €



Winter high rate per week
0 €



Builder
Conrad



Year built
2024



Length
44.27 m



Guests Cruising
10



Cabins
5

Winter Cruising Area(s)

Summer Cruising Area(s)

Corsica - Sardinia, French Riviera, Italy & Sicily, Spain & Balearics, West Mediterranean

Crew
9

Max speed
12 knots

Cruising speed
11 knots

Fuel consumption
120 L/H

Type of cabins

5 (3 x Double, 2 x Convertible)