



## M/Y ROLA



Length  
**47.5m**  
155.84 ft.



Guests  
**12**



Cabins  
**5**



Crew  
**9**

# M/Y ROLA

-  Air Conditioning
-  Flyboard
-  Jacuzzi
-  Jetski x 2
-  Paddle Boards x 2
-  Seabob x 2
-  Snorkeling Gear
-  Stabilisers at anchor
-  Stabilisers underway
-  Tender
-  Towable water toys
-  Wakeboard
-  Waterskis
-  Wifi



# EXTERIOR DESIGN







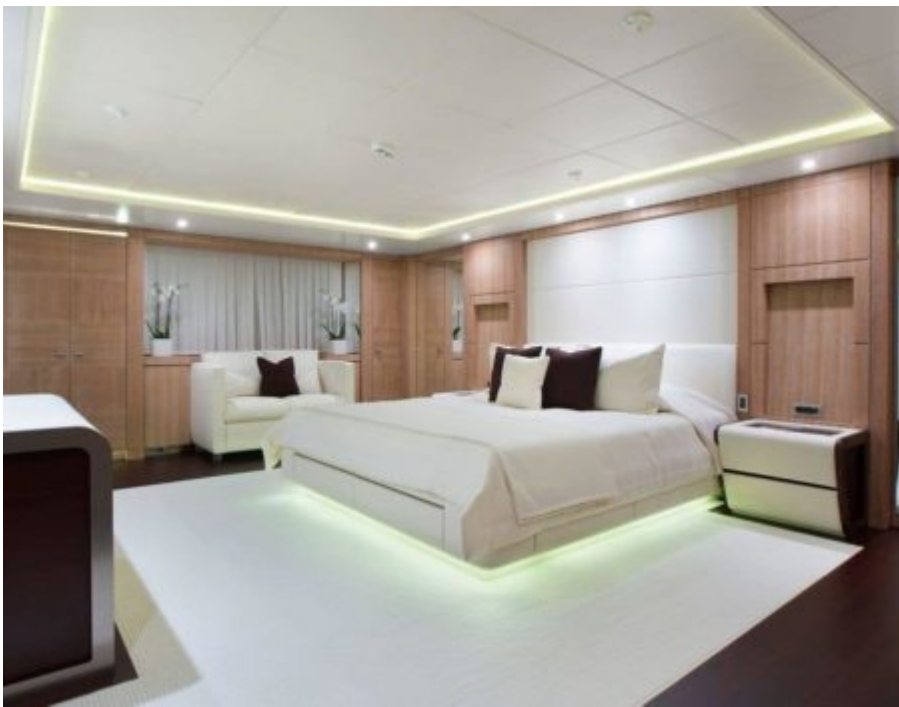


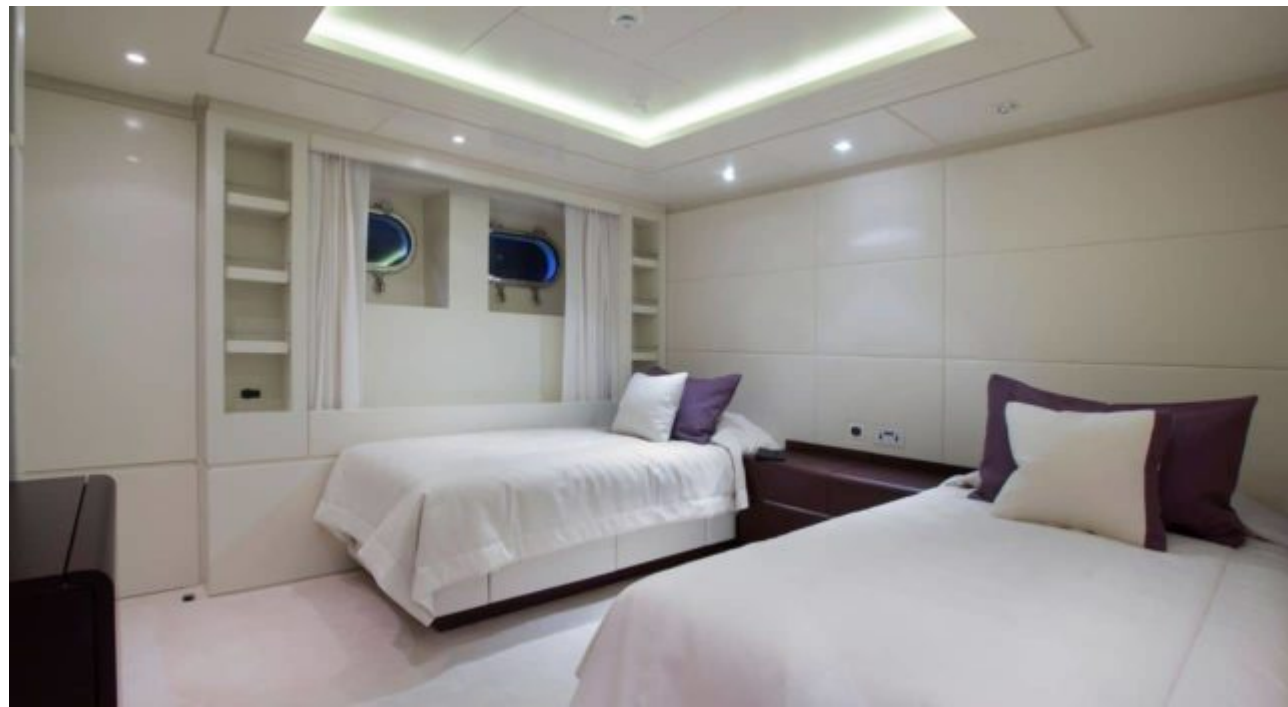
# INTERIOR DESIGN











# GALLERY LIFESTYLE







# Specifications



Summer low rate per week

154 000 €



Summer high rate per week

175 000 €



Winter low rate per week

154 000 €



Winter high rate per week

175 000 €



Builder

Ancona Shipyard



Year built

2006



Year refit

2015



Length

47.5 m



Guests Cruising

12



Cabins

5

Winter Cruising Area(s)

East Mediterranean, West Mediterranean

Summer Cruising Area(s)

Corsica - Sardinia, Croatia, East Mediterranean, French Riviera, Greece, Italy & Sicily, West Mediterranean

Crew

9

Max speed

16.8 knots

Cruising speed

13.5 knots

Fuel consumption

670 Litres/Hr

Type of cabins

5 (3 x Double, 2 x Twin, 1 x Pullman)