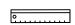






M/Y MY LITTLE VIOLET













 Length
46m 150.92 ft.

 Guests
12

 Cabins
4

 Crew
10

M/Y MY LITTLE VIOLET

- 
8m+ tender boat / day boat
- 
Air Conditioning
- 
Jetski x 2
- 
Seadoo Seascooter (for diving)
- 
Snorkeling Gear
- 
Stabilisers at anchor
- 
Stabilisers underway
- 
Tender
- 
Towable water toys
- 
Waterskis
- 
Wifi
- 
Scuba diving



EXTERIOR DESIGN



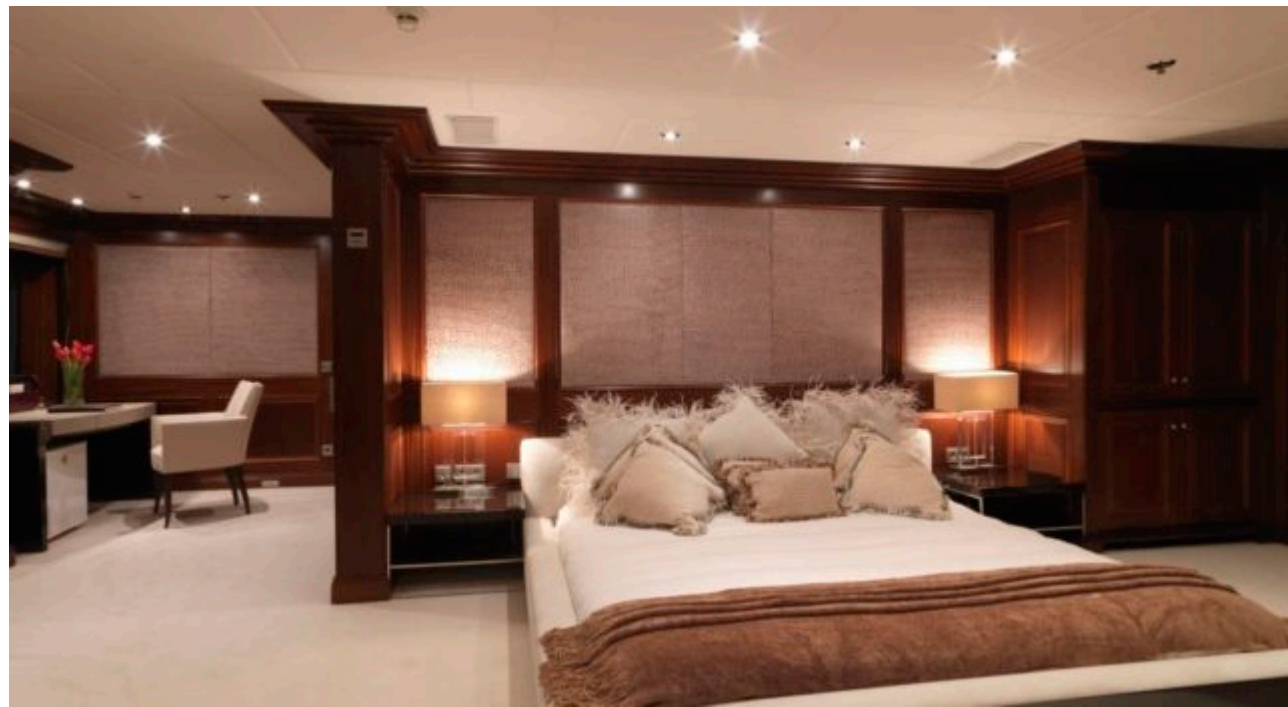


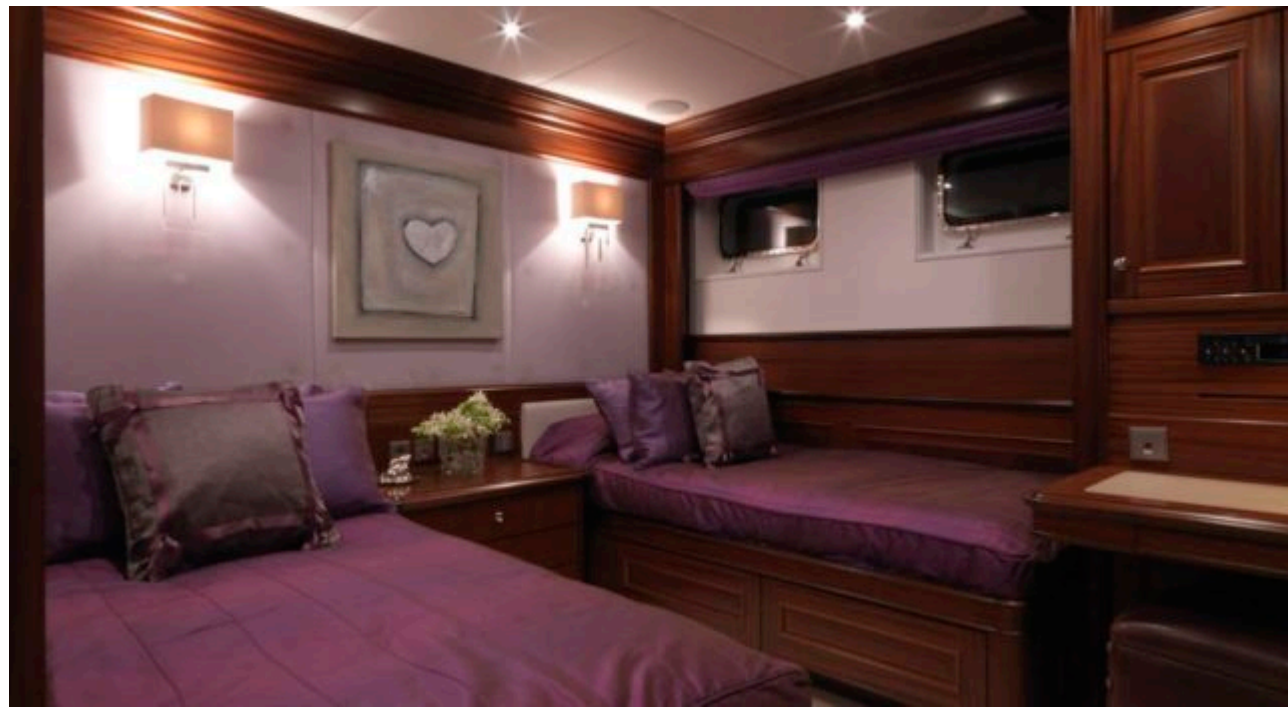


INTERIOR DESIGN









GALLERY LIFESTYLE



Specifications



Low rate per day

30 000 €



High rate per day

33 335 €



Summer low rate per week

180 000 €



Summer high rate per week

200 000 €



Winter low rate per week

180 000 €



Winter high rate per week

200 000 €



Builder

Abeking & Rasmussen



Year built

2006



Length

46 m



Guests Cruising

12



Cabins

4

Winter Cruising Area(s)

West Mediterranean

Summer Cruising Area(s)

Corsica - Sardinia, Croatia, East Mediterranean, French Riviera, Italy & Sicily, West Mediterranean

Crew

10

Max speed

15 knots

Cruising speed

12 knots

Fuel consumption

220 Litres/Hr

Type of cabins

4 (4 x Double, 1 x Twin)