



M/Y MATSU



Length
37.00m
121.39 ft.



Guests
24



Cabins
4



Crew
6

M/Y MATSU



Fridge



Kitchen



Microwave



Shower



Sunbeds



Air Conditioning



Jacuzzi



Jetski x 2



Paddle Boards x
2



Seabob x 2



Snorkeling Gear



Stabilisers
underway



Television



Tender



Wifi



EXTERIOR DESIGN













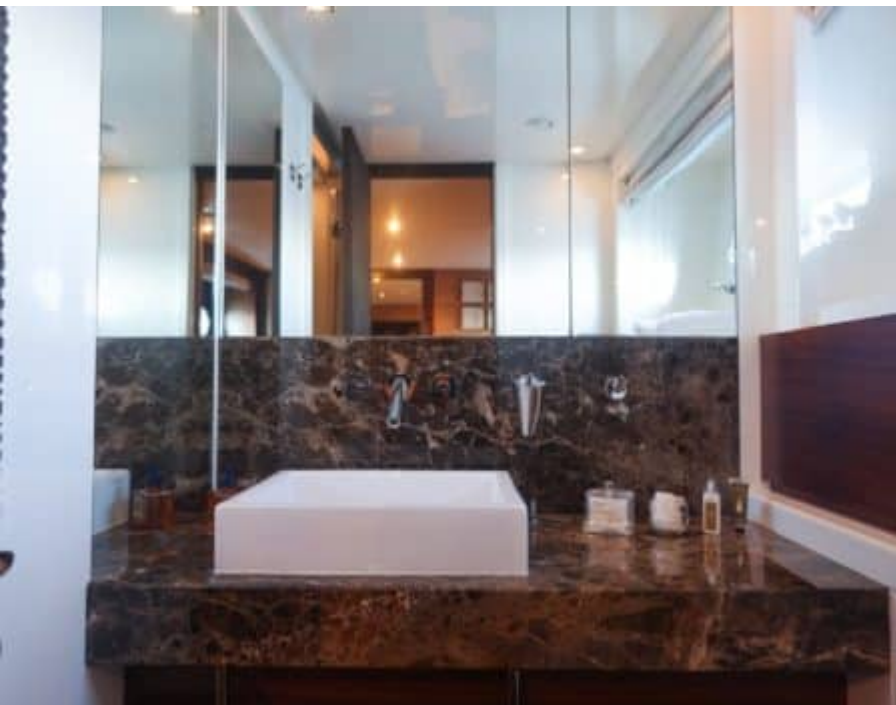
INTERIOR DESIGN

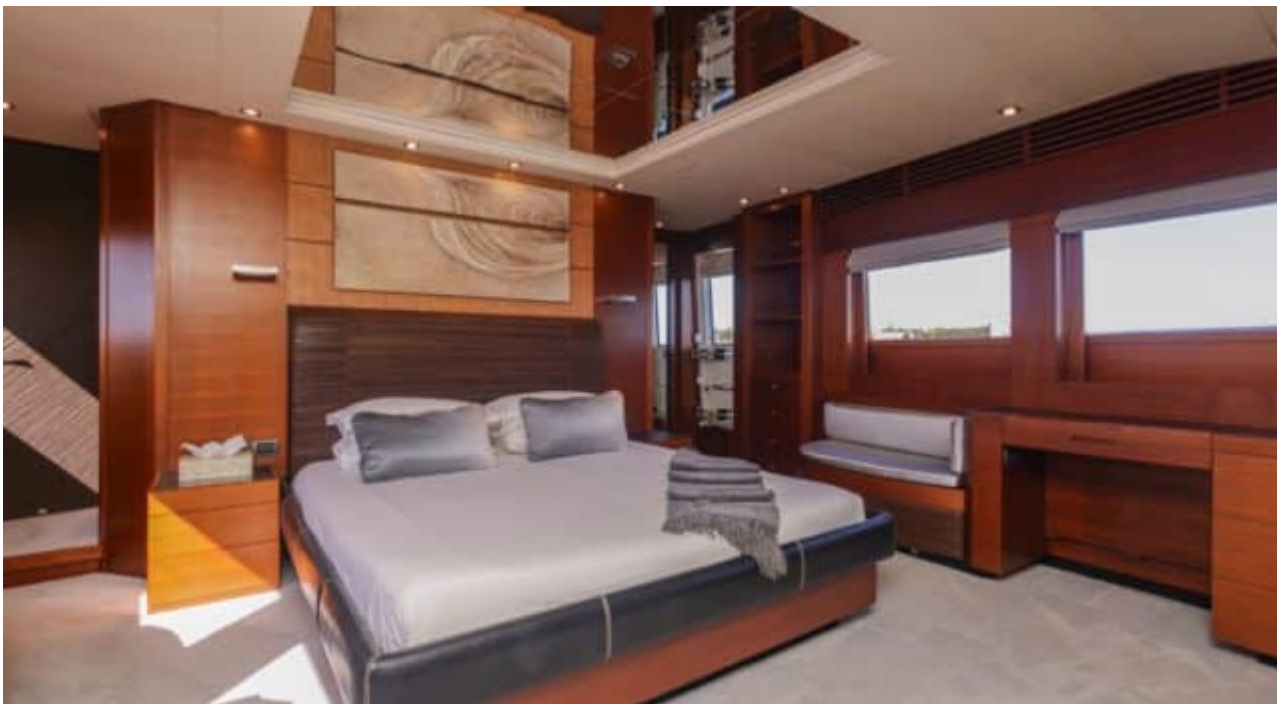














GALLERY LIFESTYLE





Specifications



Low rate per day

16 500 €



High rate per day

18 000 €



Summer low rate per week

108 000 €



Summer high rate per week

108 000 €



Winter low rate per week

96 000 €



Winter high rate per week

96 000 €



Builder

Ancona Shipyard



Year built

2007



Year refit

2024



Length

37.00 m



Guests Cruising

24



Cabins

4

Winter Cruising Area(s)

Corsica - Sardinia, French Riviera, Italy & Sicily, West Mediterranean

Summer Cruising Area(s)

Corsica - Sardinia, French Riviera, Italy & Sicily, West Mediterranean

Crew

6

Max speed

31 knots

Cruising speed

20 knots

Fuel consumption

850 L/Hr

Type of cabins

4 (3 x Double, 1 x Twin)