



*M/Y IMPULSIVE ( EX  
INFINITY PACIFIC )*



Length  
**40.20m** 131.89 ft.



Guests  
**50**










Cabins  
**5**



Crew  
**8**

# M/Y IMPULSIVE ( EX INFINITY PACIFIC )

-  Air Conditioning
-  Fishing Gear
-  Jacuzzi
-  Outdoor Cinema
-  Paddle Boards x 2
-  Seabob x 2
-  Snorkeling Gear
-  Stabilisers at anchor
-  Stabilisers underway
-  Tender
-  Towable water toys
-  Wifi
-  Scuba diving
-  Water slide





# EXTERIOR DESIGN









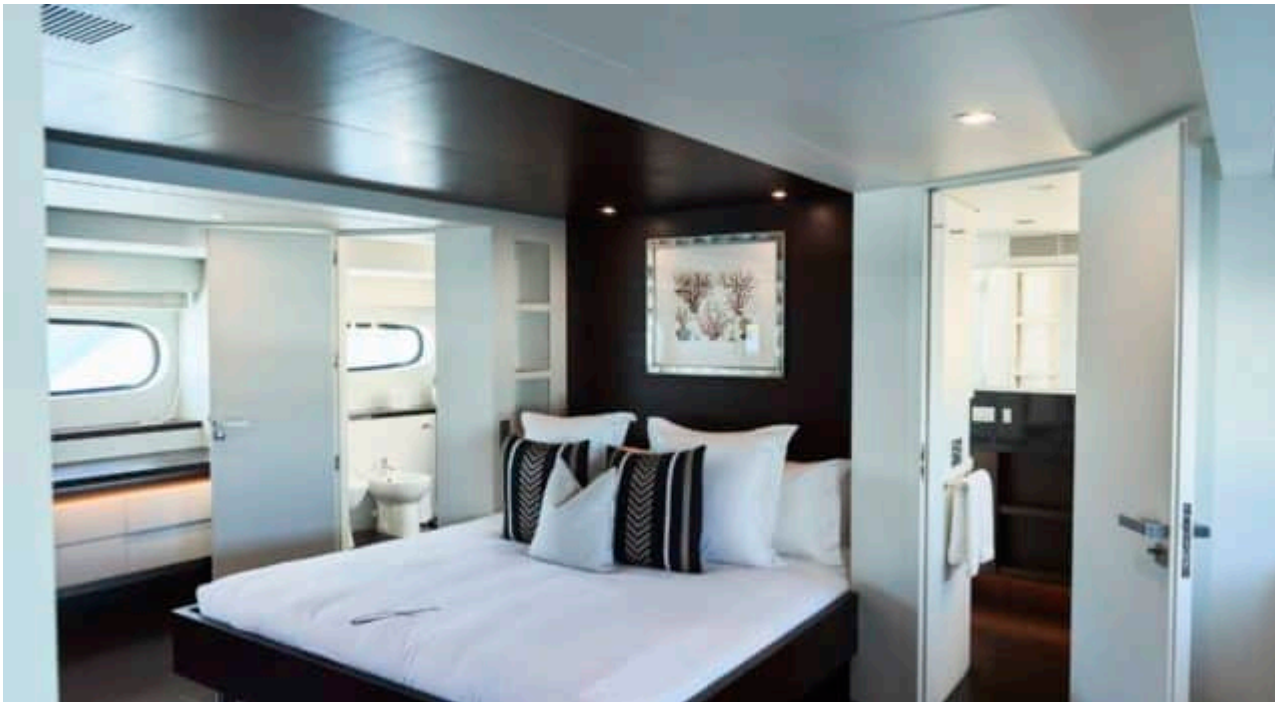






# INTERIOR DESIGN











# GALLERY LIFESTYLE













# Specifications



Summer low rate per week

\$ 159 091



Summer high rate per week

\$ 159 091



Winter low rate per week

\$ 190 910



Winter high rate per week

\$ 190 910



Builder

Mondomarine



Year built

2007



Year refit

2023



Length

40.20 m



Guests Cruising

50



Cabins

5

Winter Cruising Area(s)

South Pacific & Australasia

Summer Cruising Area(s)

South Pacific & Australasia

Crew

8

Max speed

18 knots

Cruising speed

12 knots

Fuel consumption

230 Litres/Hr

Type of cabins

5 (3 x Double, 2 x Twin)