



M/Y AZALEA



Length
38.75m
127.13 ft.



Guests
18

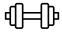




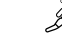




Cabins
9



Crew
13

M/Y AZALEA

-  Air Conditioning
-  Gym Equipment
-  Jacuzzi
-  Jetski x 2
-  Kayaking
-  Monoski
-  Paddle Boards x 2
-  Seadoo
-  Surf Board
-  Tender
-  Seascooter (for diving)
-  Wakeboard
-  Waterskis
-  Wifi
-  Scuba diving
-  Water slide



EXTERIOR DESIGN



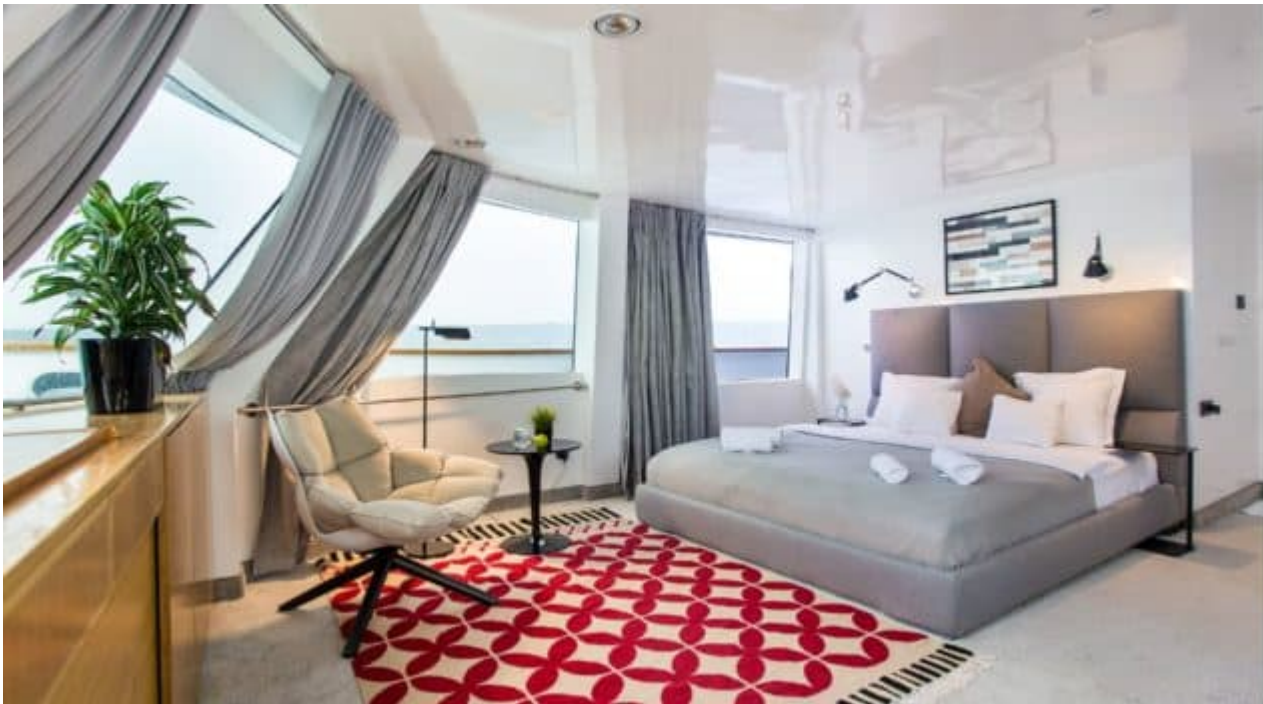


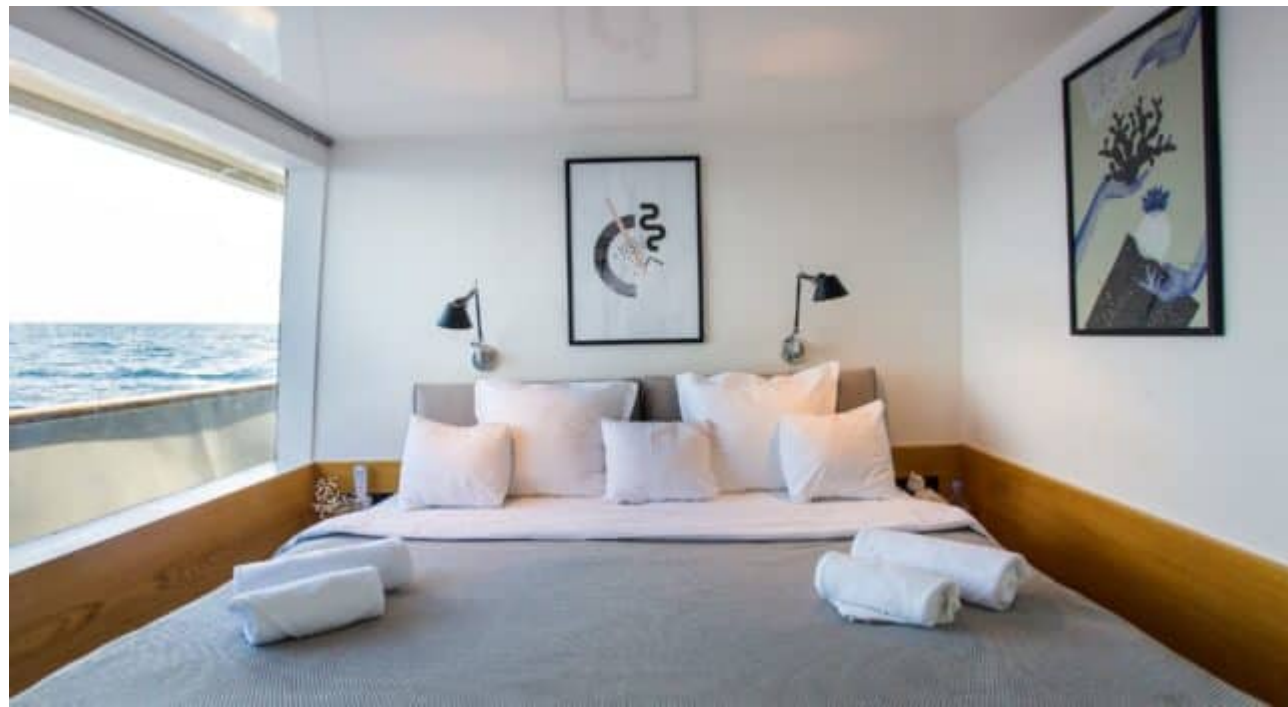




INTERIOR DESIGN









GALLERY LIFESTYLE











Specifications



Summer low rate per week

55 000 €



Summer high rate per week

66 000 €



Winter low rate per week

66 000 €



Winter high rate per week

77 000 €



Builder

Damietta



Year built

2015



Length

38.75 m



Guests Cruising

18



Cabins

9

Winter Cruising Area(s)

Indian Ocean & South East Asia

Summer Cruising Area(s)

Indian Ocean & South East Asia

Crew

13

Max speed

14 knots

Cruising speed

10 knots

Fuel consumption

200 Litres/Hr

Type of cabins

9 (3 x Double, 6 x Twin)